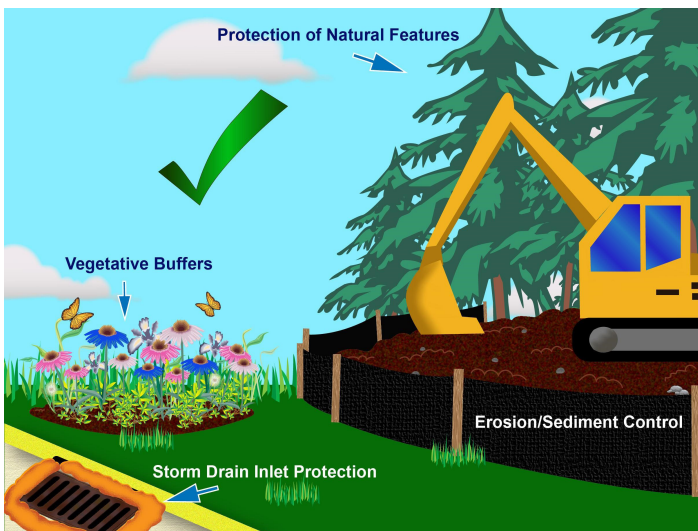


CLEAN CONSTRUCTION FOR SOIL EROSION PREVENTION

As a developer, you play a big role in keeping our waterways clean. Follow these tips to prevent erosion at your site and reduce stormwater pollution.

DO



DON'T



WHAT CAN YOU DO?

- Contact the local municipality to determine if you need a permit.
- Pick a combination of erosion and sediment controls that work for your site. This includes practices that protect natural landscape features, like streams and wetlands, and stabilize soil.
- Use best practices that protect and maintain silt fences, storm drain inlets, and construction entrances.

WHY IS THIS NECESSARY?

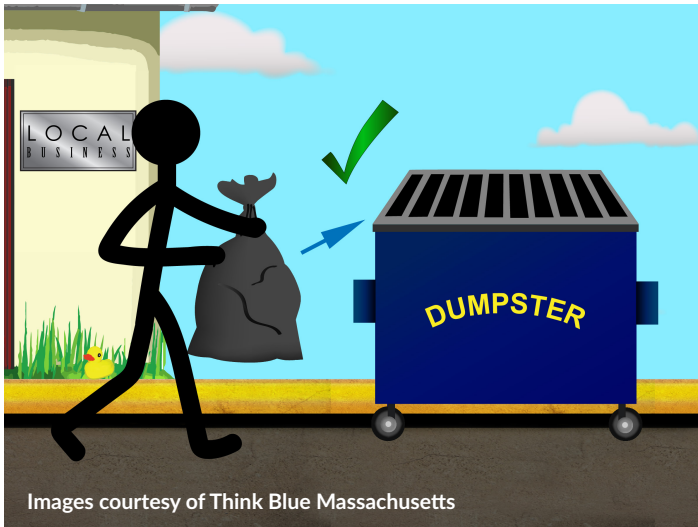
- Water that falls on your construction site either soaks into the ground or runs off into storm drains. Any pollution and sediment on the ground can be swept up with this stormwater as well.
- Water and pollution that goes into storm drains eventually ends up in lakes, rivers, and streams.
- Once these pollutants reach waterways, they can harm aquatic habitats and make them unsafe for outdoor fun.
- Most importantly, allowing polluted runoff to leave your site and enter a storm drain or waterway is against the law.

PROTECT WATER QUALITY

PUT WASTE IN ITS PLACE

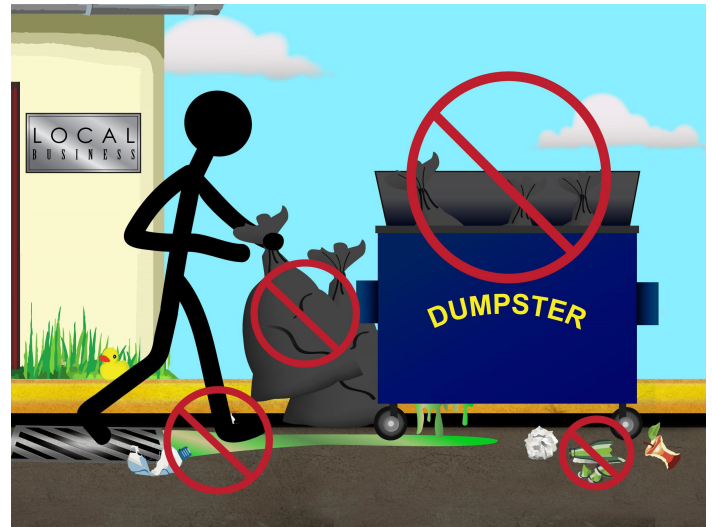
As a business owner, you play an important role in keeping our waterways clean and healthy! Follow these tips to reduce polluted runoff, prevent flooding, and make a good impression with your customers:

DO



- Inspect your dumpster daily.
- Make sure the lid is kept closed and locked.
- Check for leaks and replace, if needed.
- Schedule regular trash pick-ups to prevent the dumpster from becoming too full.

DON'T



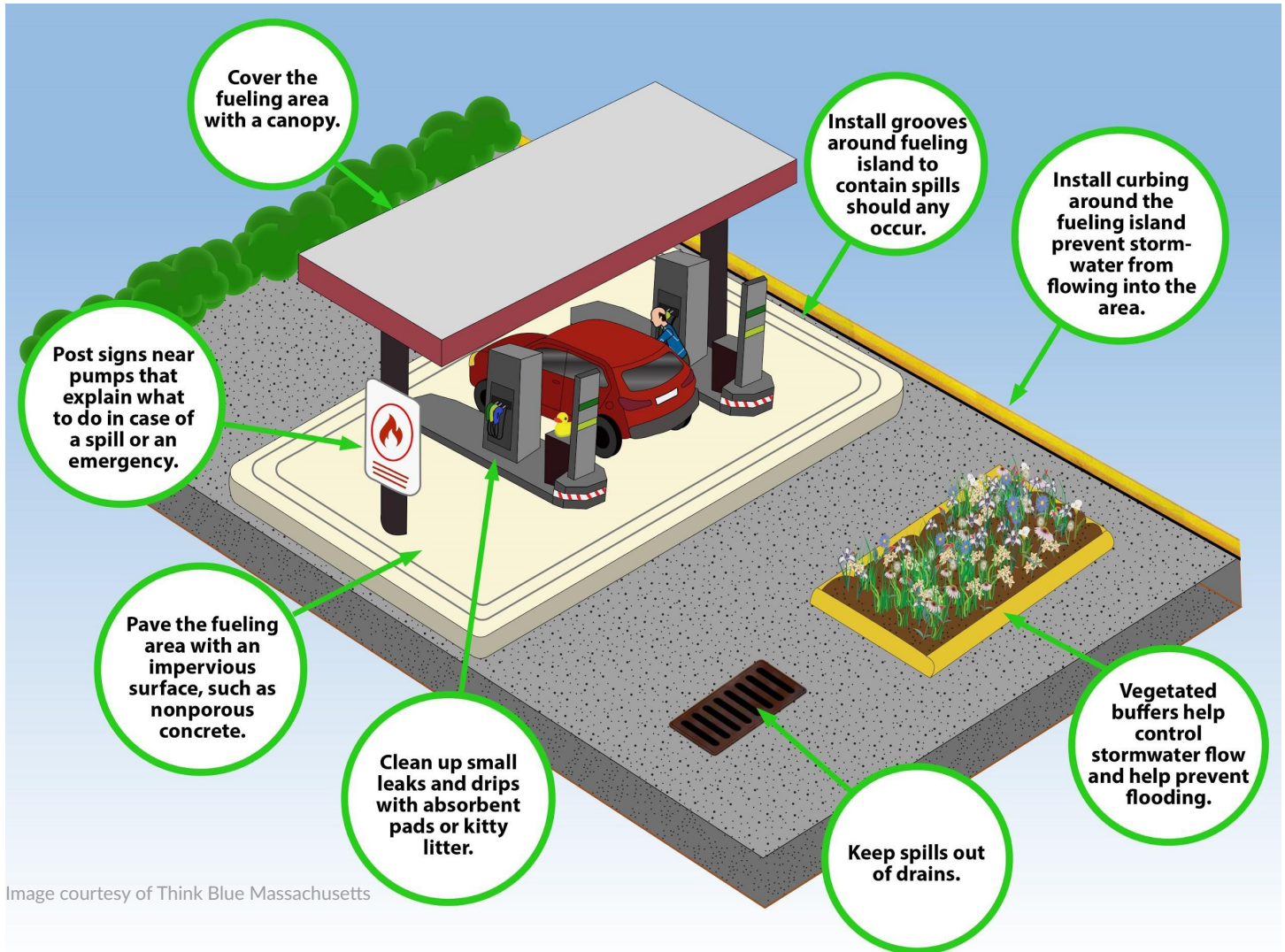
- Don't place leaking containers in the dumpster when emptying trash.
- Though it's sure to get smelly, never hose down the inside of your dumpster.

WHY IS THIS NECESSARY?

Rain that falls on and around your site can pick up trash, dirt, and chemical residue as it drains away. Much of this water, or stormwater, ends flows into storm drains before discharging directly into our lakes, rivers, and streams. It's one of the top causes of water pollution in the country. By keeping pollution off the ground, you prevent it from entering and impacting our waterways.

Business owners can do their part to keep Michigan's waterways clean.
Find more tips like these at www.MyWatersheds.org.

PUT THE BRAKES ON GAS STATION POLLUTION



WHY IS THIS NECESSARY?

The storm drains in our streets and parking lots discharge directly into rivers and streams without undergoing treatment. That means any pollutants on the ground like spilled automotive fluids, litter, and dirt can be swept up with rain and snow melt as it enters our waterways. Designing and maintaining gas stations responsibly can help keep our waterways safe and clean.

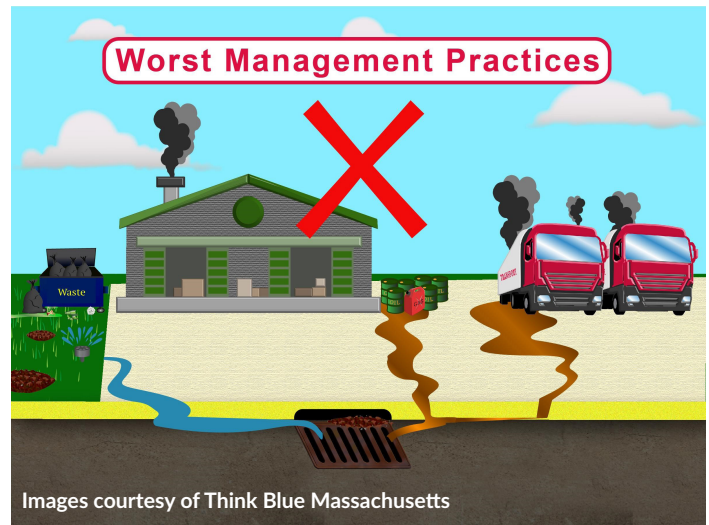
PROTECT WATER QUALITY PRACTICE GOOD HOUSEKEEPING

Business owners play an important role in keeping our waterways clean and healthy! Follow these tips to reduce polluted runoff, prevent flooding, and make a good impression with your customers.

DO



DON'T



WHAT CAN YOU DO?

- Inspect your vehicles and equipment for leaks regularly.
- Use drip pans to catch fluids and keep a cleanup kit nearby in case a spill occurs.
- Perform vehicle maintenance inside
- Cleanup spills immediately.
- Make sure dumpsters are covered and leak free.

WHY IS THIS NECESSARY?

- Gasoline, oil, and grease from vehicles and equipment can wash into storm drains.
- Water that enters storm drains eventually ends up in our lakes, rivers, and streams.
- Once pollutants reach these waterways, they can harm fish and other wildlife.
- This pollution can even make our water unsafe to drink.

Business owners can do their part to keep Michigan's waterways clean.
Find more tips like these at www.MyWatersheds.org.

STORMWATER SMART CHEMICAL STORAGE

As an industrial facility, you are responsible for all pollutants that leave your property and play a big role in keeping our waterways clean. Follow these tips to prevent spills at your facility and reduce stormwater pollution.

DO



- Maintain accurate records and Material Safety Data Sheet (MSDS) information for stored materials at your site.
- Store chemicals and hazardous materials according to manufacturer's instructions. Storage areas should be dry, cool, well-ventilated, and insulated.
- Check storage areas often for leaks and spills. Be sure storage areas are equipped with easily accessible spill cleanup kits.

DON'T



Images courtesy of Think Blue Massachusetts

- Don't leave materials out in the open. Store them indoors in covered, sealed containers, such as a locked cabinet.
- Don't dump excess, outdated, or waste materials into storm drains or other stormwater structures. Dispose of them according to the manufacturer's instructions and local regulations.
- Don't store materials incorrectly. Waste materials should be kept in secure, labeled containers.

WHY IS THIS NECESSARY?

Rain that falls on and around your site can pick up trash, dirt, and chemical residue as it drains away. Much of this water, or stormwater, flows into storm drains before discharging directly into our lakes, rivers, and streams. It's one of the top causes of water pollution in the country. By keeping pollution off the ground, you prevent it from entering and impacting our waterways.

MANAGING LAWNS FOR WATER QUALITY

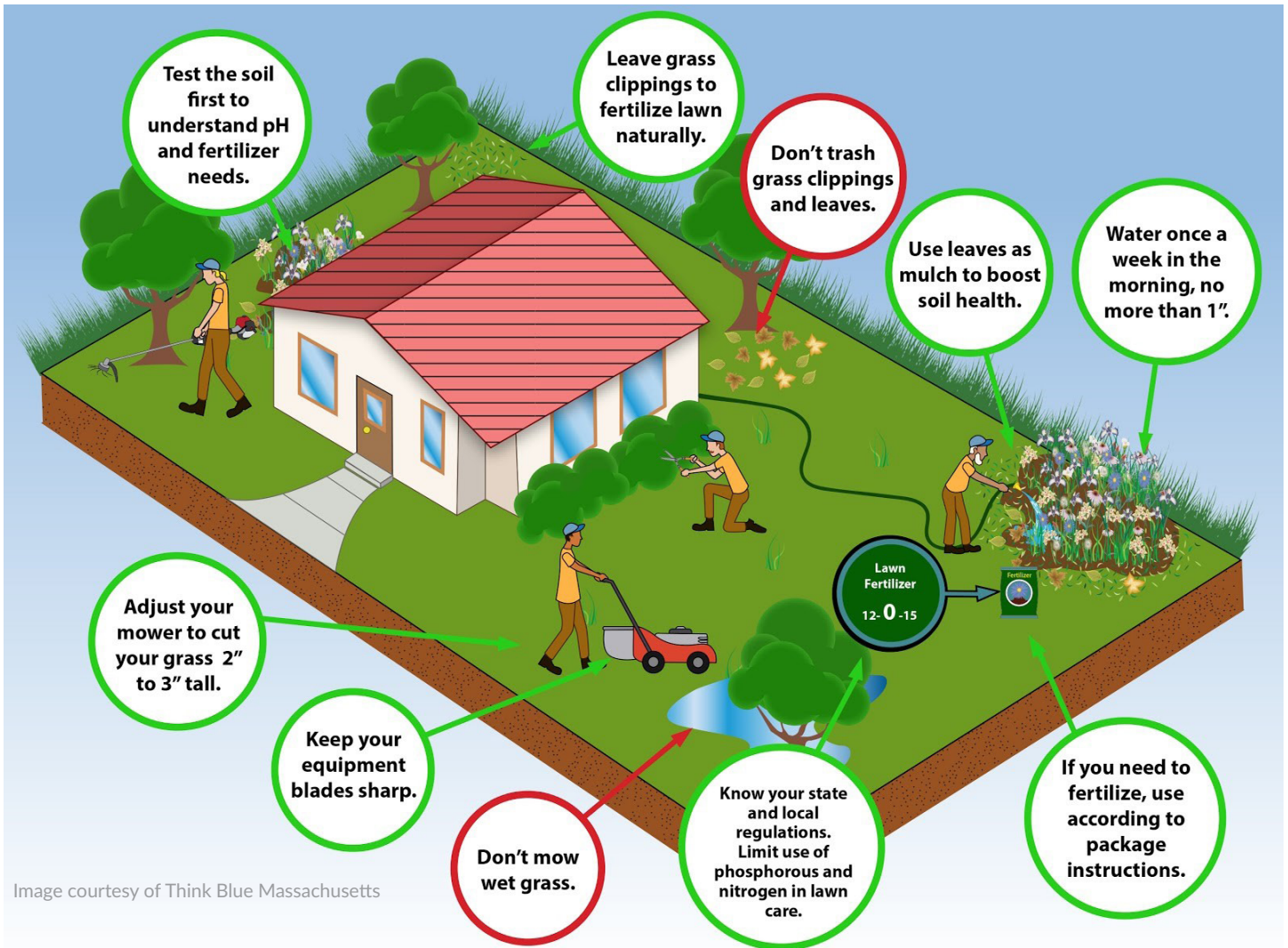


Image courtesy of Think Blue Massachusetts

WHY IS THIS NECESSARY?

Michigan law restricts the use of phosphorus fertilizers on residential and commercial lawns. Look for fertilizers with zero phosphorus. The product will list three numbers that indicate the amount of nitrogen, available phosphate, and soluble potash. The middle number should be zero, meaning the product is phosphate free.

Contact Michigan State University at www.homesoiltest.msu.edu to perform a routine soil test so you can better understand your fertilizer needs.



IT'S TIME TO CURB PARKING LOT POLLUTION

As a business owner, you play an important role in keeping our waterways clean and healthy! Follow these tips to reduce polluted runoff, prevent flooding, and make a good impression with your customers.

DO

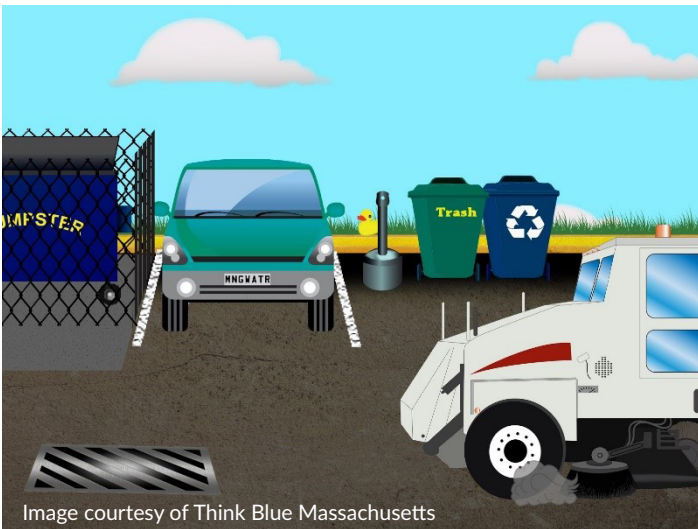


Image courtesy of Think Blue Massachusetts

- Maintain storm drains and stormwater structures regularly and clean and repair as necessary
- Sweep parking lots regularly to collect trash and debris.
- Provide covered trash cans, recycling bins, and cigarette butt receptacles in highly visible areas.
- Consider a dumpster enclosure, pad or fence around dumpsters.

DON'T



- Don't wash vehicles in your parking lot. Use a car wash or vehicle wash bays that direct dirty wash water to the sewer, not storm drains.
- Don't leave dumpsters open.
- Don't let trash cans overflow.

WHY IS THIS NECESSARY?

Rain that falls on and around your site can pick up trash, dirt, and chemical residue as it drains away. Much of this water, or stormwater, flows into storm drains before discharging directly into our lakes, rivers, and streams. It's one of the top causes of water pollution in the country. By keeping pollution off the ground, you prevent it from entering and impacting our waterways.

Business owners can do their part to keep Michigan's waterways clean.
Find more tips like these at www.MyWatersheds.org.



PROTECT OUR WATERS

STOP THE SALT ASSAULT

De-icing salt dissolves in melted snow and ice, flows into storm drains, and is discharged into our rivers and streams (not a treatment plant). This saline water threatens drinking water supplies and aquatic ecosystems. By adopting these practices, business owners can reduce their contribution to salt pollution.

DO



- Keep storm drains, catch basins, and stormwater structures clear of snow, litter, grass, and leaves. They can clog these structures.
- Use only as much salt is needed to match site conditions.
- Shovel or plow thoroughly prior to salting.
- Purchase eco-friendly salt alternatives.
- Use a salt brine rather than rock salt.

DON'T



Images courtesy of Think Blue Massachusetts

- Don't leave salt and ice melt uncovered or open to rain and snow.
- Avoid spreading clumps
- Don't dump grease or oil into a storm drain, catch basin, or other stormwater structure.

WHY IS THIS NECESSARY?

Rain that falls on and around your site can pick up trash, dirt, and chemical residue as it drains away. Much of this water, or stormwater, flows into storm drains before discharging directly into our lakes, rivers, and streams. It's one of the top causes of water pollution in the country. By keeping pollution off the ground, you prevent it from entering and impacting our waterways.

Business owners can do their part to keep Michigan's waterways clean.
Find more tips like these at www.MyWatersheds.org.

STOP THE SPILLS PREVENT POLLUTION

As an industrial facility, you are responsible for all pollutants that leave your property and play a big role in keeping our waterways clean. Follow these tips to prevent spills at your facility and reduce stormwater pollution.

DO



- Inspect facilities yearly and perform maintenance activities as needed.
- Ensure floor drains and other drains are properly connected to sanitary sewer systems.
- Keep up-to-date maintenance and inspection records on-site.
- Train employees to respond to spills.
- Keep spill response kits in accessible locations throughout the facility, especially near areas where spills may occur.
- Consider purchasing drain cover seals to isolate areas to prevent spilled materials from entering the drainage system and local waterways.

DON'T



- Don't leave chemicals and hazardous materials in open or loosely sealed containers. Store them in closed and labeled containers.
- Don't store chemicals and hazardous materials outside. Containers should be kept inside secure buildings and on impervious surfaces.
- Don't forget to wear appropriate protective equipment, such as gloves, goggles, and hazmat boots, when cleaning up a spill.
- Don't allow spills to enter storm drain systems. Report & monitor any spills to storm sewer or waterways to appropriate state and local authorities.

WHY IS THIS NECESSARY?

Rain that falls on and around your site can pick up trash, dirt, and chemical residue as it drains away. Much of this water, or stormwater, flows into storm drains before discharging directly into our lakes, rivers, and streams. It's one of the top causes of water pollution in the country. By keeping pollution off the ground, you prevent it from entering and impacting our waterways.

STORMWATER SAFE CONSTRUCTION SITES

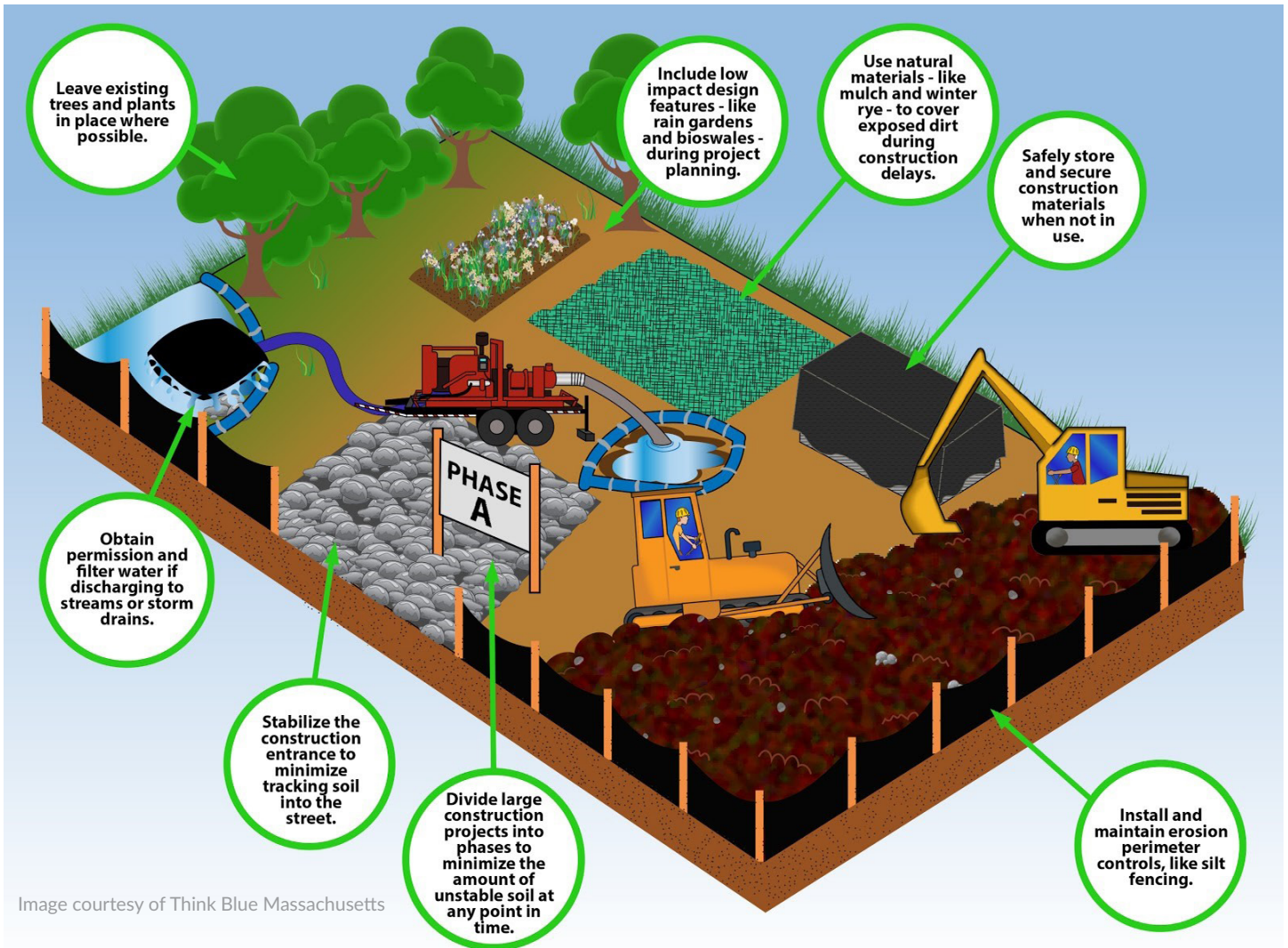


Image courtesy of Think Blue Massachusetts

WHY IS THIS NECESSARY?

The storm drains in our streets and parking lots discharge directly into rivers and streams without undergoing treatment. That means any pollutants on the ground like loose sediment and debris can be swept up with rain and snow melt as it flows into our waterways. Well maintained and organized construction sites can help keep our waterways safe and clean. Check with your local municipality to make sure you have the proper permits before beginning construction.