

Project Name: Pattengill - Bid Package 3 – MEP & Interior  
Finishes

Project No.: 221125-190

Architect: Kingscott

Date: 5/13/24

Bid Package No.: 3

Bid Due Date: 5/16/2024 @ 2:00PM

This Addendum is issued to inform the bidders of modifications in the scope of work being bid for this project.

**A. Documents included in this Addendum:**

- Kingscott BP03 Addendum I Writeup
- RFIs
- Pre-Bid Meeting Agenda
- Pre-Bid Meeting Attendance

**B. Other modifications:**

- Work Category Descriptions
  - WC 20
  - WC 27
    - Remove Specific Note #6. Heat trace scope to be moved to WC 28.
    - Remove Specific Note #7. Fire Suppression scope to be done by others.
  - WC 28
    - Add Specific Note #9 “Provide and install heat trace on all piping in the crawl space as noted.”.

**C. Bids are due 5/16/2024 @ 2:00PM.**

- **Include in your bid the increase or decrease for all materials, labor, supervision, overhead and profit required to properly and completely execute the work described in this Addendum.**
- **Acknowledge receipt of this Addendum on the Bid Proposal Form.**

The applicable provisions of the Contract Documents shall govern all work included herein unless specifically noted otherwise.

**END OF ADDENDUM NO. [1]**

Date: 05/10/2024  
Project: Pattengill Modular Classroom Building  
Owner: Lansing School District  
Location: Lansing, MI  
A/E #: 2616.05

### **BID PACK 03 - ADDENDUM NO. 01**

#### **SPECIAL NOTE:**

The Notice to Bidders, Instructions to Bidders, General Conditions of the Contract for Construction, Supplementary Conditions of the Contract for Construction, and all modifications and previously issued Contract Documentation are a part of this Addendum.

#### **SCOPE OF WORK:**

The following items are changes, additions, deletions, clarifications and/or errors and omissions in plans & specifications and shall be considered by each Bidder in making up and submitting their proposal. All items shall be considered a part of the Contract Documents.

#### **NOTICE TO ALL BIDDERS:**

All Bidders shall take note of all items covered by this Addendum. Each Bidder shall review the total scope of his responsibilities with respect to his contract work and his interface with the work of others, as well as his required interface with their work.

#### **SPECIFICATIONS:**

Item No. 1. Refer to specification section: 096519  
A. Product /Color selection has been updated.

#### **DRAWINGS:**

**Item No 1.** Drawings A0.1 First Floor Composite Plan  
Reissued to indicated toilet room and JC accessories, to be owner provided and contractor installed, or factory provided/ installed.

**Item No 2.** Drawing G0.2 Data Sheet  
Issued to indicate typical mounting heights for toilet room accessories that are to be contractor installed.

#### **END OF ADDENDUM**

Kingscott Associates, Inc.  
Architects/Engineers  
Kalamazoo, Michigan

Pattengill Modular Classroom Building  
Lansing School District  
Lansing, Michigan

SECTION 096519  
RESILIENT TILE FLOORING

PART 1 - GENERAL

1.1 RELATED DOCUMENTS

- A. Drawings and general provisions of the Contract, including General and Supplementary Conditions and Division 01 Specification Sections, apply to this Section.

1.2 SUMMARY

- A. Section Includes:

- 1. Luxury vinyl tile.

1.3 RELATED REQUIREMENTS:

Section 096513 "Resilient Base and Accessories" and Section 096519 "Resilient Tile Flooring" for resilient wall base and accessories installed.

1.4 ACTION SUBMITTALS

- A. Product Data: For each type of product.

1.5 CLOSEOUT SUBMITTALS

- A. Maintenance Data: For each type of floor tile to include in maintenance manuals.

1.6 MAINTENANCE MATERIAL SUBMITTALS

- A. Furnish extra materials from the same product run that match products installed and that are packaged with protective covering for storage and identified with labels describing contents.
  - 1. Floor Tile: Furnish one box for every 50 boxes or fraction thereof, of each type, color, and pattern of floor tile installed.

## 1.7 QUALITY ASSURANCE

- A. Installer Qualifications: An entity that employs installers and supervisors who are competent in techniques required by manufacturer for floor tile installation and seaming method indicated.
  - 1. Engage an installer who employs workers for this Project who are trained or certified by floor tile manufacturer for installation techniques required.
  - 2. Flooring contractor will be responsible for the proper product installation, including floor preparation in all the areas indicated in the drawings to receive LVT.

## 1.8 DELIVERY, STORAGE, AND HANDLING

- A. Store floor tile and installation materials in dry spaces protected from the weather, with ambient temperatures maintained within range recommended by manufacturer, but not less than 50 deg F or more than 90 deg F. Store floor tiles on flat surfaces.

## 1.9 FIELD CONDITIONS

- A. Maintain ambient temperatures within range recommended by manufacturer, but not less than 70 deg F or more than 95 deg F in spaces to receive floor tile during the following periods:
  - 1. 72 hours before installation.
  - 2. During installation.
  - 3. 72 hours after installation.
- B. After installation and until Substantial Completion, maintain ambient temperatures within range recommended by manufacturer, but not less than 55 deg F or more than 95 deg F.
- C. Close spaces to traffic during floor tile installation.
- D. Close spaces to traffic for 72 hours after floor tile installation.
- E. Install floor tile after other finishing operations, including painting, have been completed.

## PART 2 - PRODUCTS

### 2.1 PERFORMANCE REQUIREMENTS

- A. Fire-Test-Response Characteristics: For resilient floor tile, as determined by testing identical products according to ASTM E648 or NFPA 253 by a qualified testing agency.
  - 1. Critical Radiant Flux Classification: Class I, not less than 0.45 W/sq. cm.

## 2.2 LUXURY VINYL FLOOR TILE (LVT-#)

1. Interface
  - a. Manufacturer's Rep:
    - 1) Charles Timmerman
    - 2) Email: Chuck.Timmerman@interface.com
    - 3) Mobile: 616-481-1719

### B. Studio Set: LVT-1

1. Product: Studio Set
2. Color: A00701 Silverlight
3. Product Construction: High Performance Luxury Vinyl Tile
4. Class / ASTM F1700 Class III Printed Vinyl Tile
5. Wear Layer Thickness: 22 mil
6. Total Thickness: 4.5 mm
7. Backing Class Commercial Grade
8. Finish: Ceramor™
9. Nominal Dimensions: 25 cm x 1 m (9.845 in x 39.38 in)
10. Warranty: 15 year Standard LVT Warranty
11. Installation: Ashlar

### C. Studio Set: LVT-2

1. Product: Studio Set
2. Color: A00720 Royal Blue
3. Product Construction: High Performance Luxury Vinyl Tile
4. Class / ASTM F1700 Class III Printed Vinyl Tile
5. Wear Layer Thickness: 22 mil
6. Total Thickness: 4.5 mm
7. Backing Class Commercial Grade
8. Finish: Ceramor™
9. Nominal Dimensions: 25 cm x 1 m (9.845 in x 39.38 in)
10. Warranty: 15 year Standard LVT Warranty
11. Installation: Ashlar

## 2.3 INSTALLATION MATERIALS

- A. Trowelable Leveling and Patching Compounds: Latex-modified, portland-cement-based or blended hydraulic-cement-based formulation provided or approved by floor tile manufacturer for applications indicated.
- B. Adhesives: Commercialon® Premium Modular/LVT Pressure Sensitive Adhesive, a premium modular flooring adhesive specifically formulated for bonding J+J Flooring's Luxury Vinyl Tile to the floor
  1. Adhesives shall comply with the following limits for VOC content:
    - a. Composition Tile Adhesives: 50 g/L or less.
  2. Adhesives shall be manufacturer's recommended for 5 lbs and water/1000 sq. ft.

## PART 3 - EXECUTION

### 3.1 EXAMINATION

- A. Examine substrates, with Installer present, for compliance with requirements for maximum moisture content and other conditions affecting performance of the Work.
  - 1. Verify that finishes of substrates comply with tolerances and other requirements specified in other Sections and that substrates are free of cracks, ridges, depressions, scale, and foreign deposits that might interfere with adhesion of floor tile.
  - 2. Examine and verify that sub-floor surfaces are smooth and flat within tolerances specified for that type of work and are ready to receive flooring.
  - 3. Verify that wall surfaces are smooth and flat within the tolerances specified for that type of work, are dust-free, and are ready to receive flooring.
  - 4. Verify that sub-floor surfaces are dust-free and free of substances that could impair bonding of adhesive materials to sub-floor surfaces.
  - 5. Verify that concrete sub-floor surfaces are dry enough and ready for flooring installation by testing for moisture emission rate and alkalinity in accordance with ASTM F 710; obtain instructions if test results are not within limits recommended by manufacturer and adhesive materials manufacturer.
  - 6. Verify that required floor-mounted utilities are in correct location.
- B. Proceed with installation only after unsatisfactory conditions have been corrected.

### 3.2 PREPARATION

- A. Prepare substrates according to floor tile manufacturer's written instructions to ensure adhesion of resilient products.
- B. Concrete Substrates: Prepare according to ASTM F710.
  - 1. Verify that substrates are dry and free of curing compounds, sealers, and hardeners.
  - 2. Remove substrate coatings and other substances that are incompatible with adhesives and that contain soap, wax, oil, or silicone, using mechanical methods recommended by floor tile manufacturer. Do not use solvents.
  - 3. Alkalinity and Adhesion Testing: Perform tests recommended by floor tile manufacturer. Proceed with installation only after substrate alkalinity falls within range on pH scale recommended by manufacturer in writing, but not less than 5 or more than 10 pH.
  - 4. Moisture Testing: Perform tests so that each test area does not exceed 200 sq. ft. and perform no fewer than three tests in each installation area and with test areas evenly spaced in installation areas.
    - a. Anhydrous Calcium Chloride Test: ASTM F1869. Proceed with installation only after substrates have maximum moisture-vapor-emission rate of 3 lb of water/1000 sq. ft. in 24 hours.

- b. Relative Humidity Test: Using in-situ probes, ASTM F2170. Proceed with installation only after substrates have a maximum 75 percent relative humidity level measurement.
- C. Fill cracks, holes, and depressions in substrates with trowelable leveling and patching compound; remove bumps and ridges to produce a uniform and smooth substrate.
  - 1. Coordinate building expansion joint trim with flooring.
- D. Do not install floor tiles until materials are the same temperature as space where they are to be installed.
  - 1. At least 72 hours in advance of installation, move resilient floor tile and installation materials into spaces where they will be installed.
- E. Immediately before installation, sweep and vacuum clean substrates to be covered by resilient floor tile.

### 3.3 FLOOR TILE INSTALLATION

- A. Comply with manufacturer's written instructions for installing floor tile.
- B. Lay out floor tiles from center marks established with principal walls, discounting minor offsets, so tiles at opposite edges of room are of equal width. Adjust as necessary to avoid using cut widths that equal less than one-half tile at perimeter.
  - 1. Lay tiles square with room axis.
  - 2. See Color Layout plans for details.
- C. Match floor tiles for color and pattern by selecting tiles from cartons in the same sequence as manufactured and packaged, if so numbered. Discard broken, cracked, chipped, or deformed tiles.
  - 1. Lay tiles in pattern of colors and sizes indicated on color layout drawings.
- D. Scribe, cut, and fit floor tiles to butt neatly and tightly to vertical surfaces and permanent fixtures including built-in furniture, cabinets, pipes, outlets, and door frames.
  - 1. Install at base cabinet interior without toe kicks.
- E. Extend floor tiles into toe spaces, door reveals, closets, and similar openings. Extend floor tiles to center of door openings.
- F. Maintain reference markers, holes, and openings that are in place or marked for future cutting by repeating on floor tiles as marked on substrates. Use chalk or other nonpermanent marking device.
- G. Install floor tiles on covers for telephone and electrical ducts, building expansion-joint covers, and similar items in installation areas. Maintain overall continuity of color and pattern between pieces of tile installed on covers and adjoining tiles. Tightly adhere tile edges to substrates that abut covers and to cover perimeters.

- H. Adhere floor tiles to substrates using a full spread of adhesive applied to substrate to produce a completed installation without open cracks, voids, raising and puckering at joints, telegraphing of adhesive spreader marks, and other surface imperfections.

### 3.4 CLEANING AND PROTECTION

- A. Comply with manufacturer's written instructions for cleaning and protecting floor tile.
- B. Perform the following operations immediately after completing floor tile installation:
  - 1. Remove adhesive and other blemishes from surfaces.
  - 2. Sweep and vacuum surfaces thoroughly.
  - 3. Damp-mop surfaces to remove marks and soil.
- C. Protect floor tile from mars, marks, indentations, and other damage from construction operations and placement of equipment and fixtures during remainder of construction period.
- D. Cover floor tile until Substantial Completion.

END OF SECTION 096519





THESE DRAWINGS AND THE WORK REPRESENTED THEREIN ARE THE PROPERTY OF KINGSCOTT ASSOCIATES, INC. AND SHALL REMAIN THE PROPERTY OF KINGSCOTT ASSOCIATES, INC. WITHOUT PERMISSION, REPRODUCTION, COPIING, OR DISTRIBUTION IS STRICTLY PROHIBITED. KINGSCOTT ASSOCIATES, INC. 1025 UNIVERSITY DRIVE, ANN ARBOR, MI 48106-1500

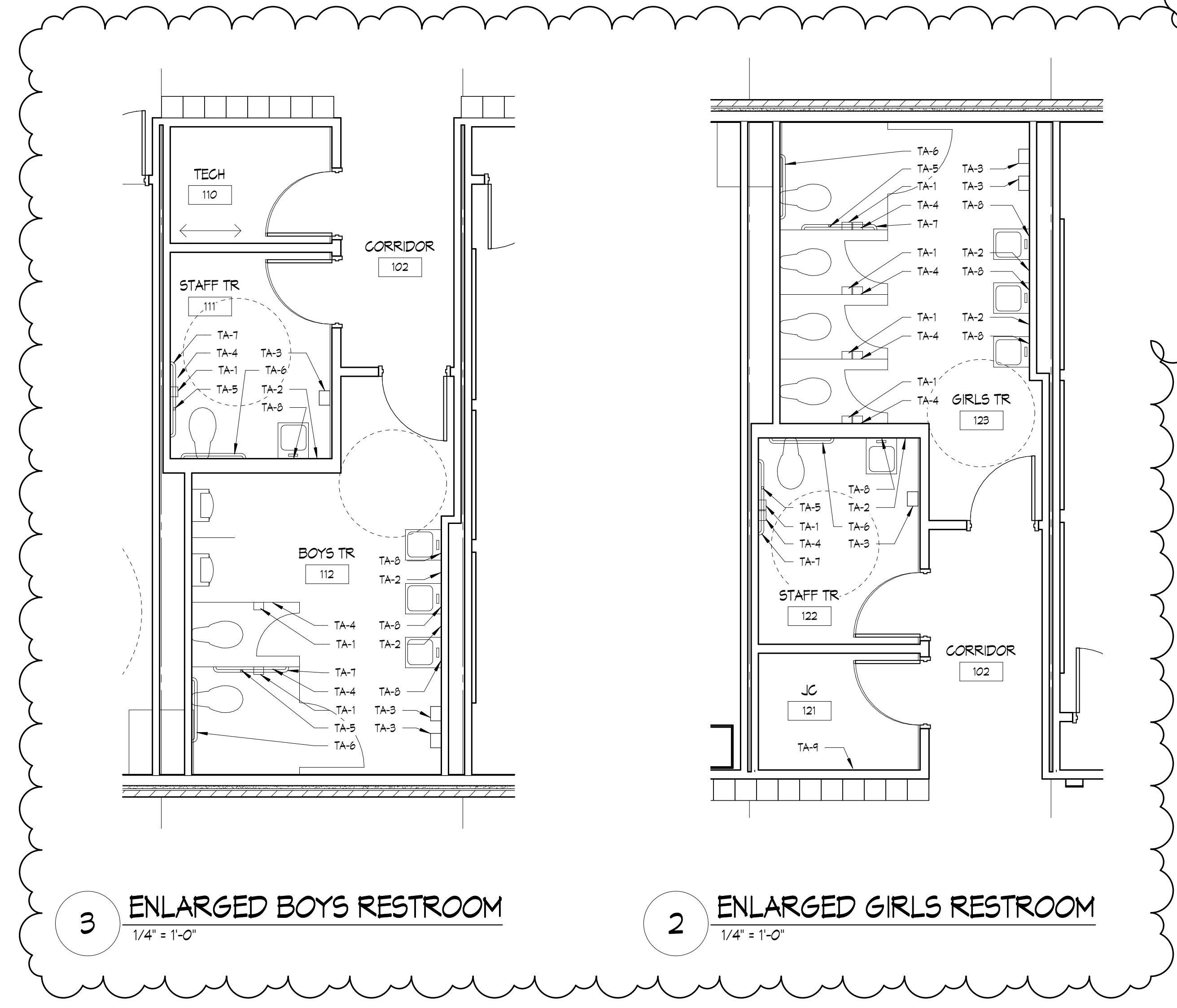
TOILET ACCESSORIES	
MARK	DESCRIPTION
TA-1	TOILET PAPER DISPENSER - PROVIDED BY OWNER
TA-2	LIQUID SOAP DISPENSER - PROVIDED BY OWNER
TA-3	PAPER TOWEL DISPENSER - PROVIDED BY OWNER
TA-4	SANITARY NAPKIN DISPOSAL UNIT - PROVIDED BY OWNER
TA-5	VERTICAL GRAB BAR - 18" - PROVIDED BY FACTORY
TA-6	HORIZONTAL GRAB BAR - 36" - PROVIDED BY FACTORY
TA-7	HORIZONTAL GRAB BAR - 42" - PROVIDED BY FACTORY
TA-8	MIRROR - 2'-0" X 3'-0" - PROVIDED BY FACTORY
TA-9	MOF & BROOM RACK - PROVIDED BY OWNER

- NOTES:
1. INSTALL UNDERLAVATORY GUARDS AT EACH LAVATORY PLUMBING CONNECTION PER SPECIFICATION SECTION 102800.
  2. SEE EQUIPMENT PLANS FOR ADDITIONAL ACCESSORIES NOT LOCATED IN TOILET ROOMS.
  3. TOILET ACCESSORIES NOTED "PROVIDED BY OWNER" SHALL BE CONTRACTOR INSTALLED.
  4. TOILET ACCESSORIES NOTED "PROVIDED BY FACTORY" SHALL BE COORDINATED AND INSTALLED BY MODULAR MANUF.
  5. REFER TO MODULAR DRAWINGS FOR FINAL FACTORY INSTALLED BLOCKING LOCATIONS.

**COMPOSITE PLAN GENERAL NOTES**

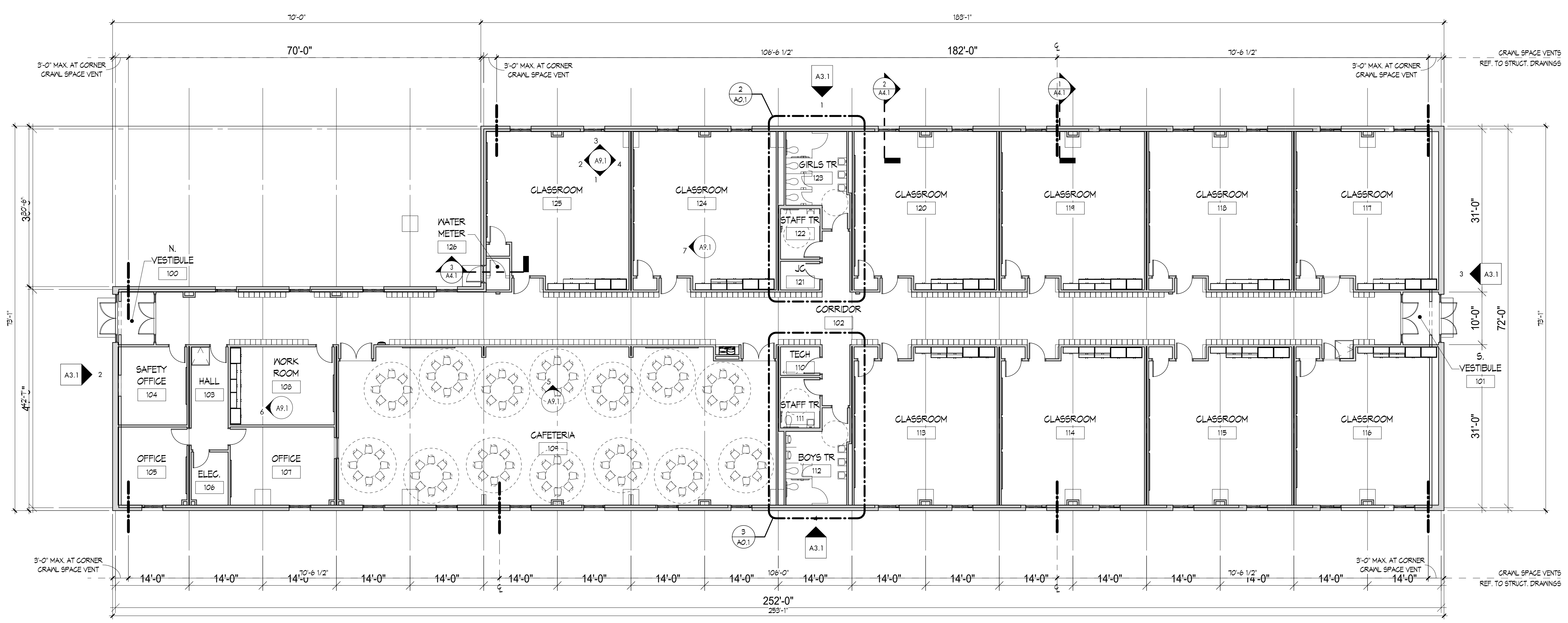
NAME: 101 INDICATES CONSTRUCTION DOCUMENT ROOM NUMBERS.

REFER TO CODE COMPLIANCE SHEETS FOR BUILDING CODE REQUIREMENTS.



**3 ENLARGED BOYS RESTROOM**  
1/4" = 1'-0"

**2 ENLARGED GIRLS RESTROOM**  
1/4" = 1'-0"



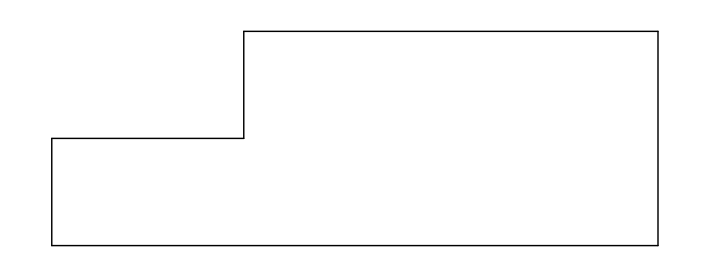
**1 COMPOSITE FLOOR PLAN**  
3/32" = 1'-0"

# PATTENGILL MODULAR CLASSROOM BUILDING

LANSING SCHOOL DISTRICT  
815 North Fairview Avenue, Lansing, MI



ISSUANCES	DATE
CONSTRUCTION DOCUMENTS BP03	04.19.2024
BP02 - PRO1	04.24.2024
BP03 - ADDENDUM 01	05.10.2024



**KEY PLAN**

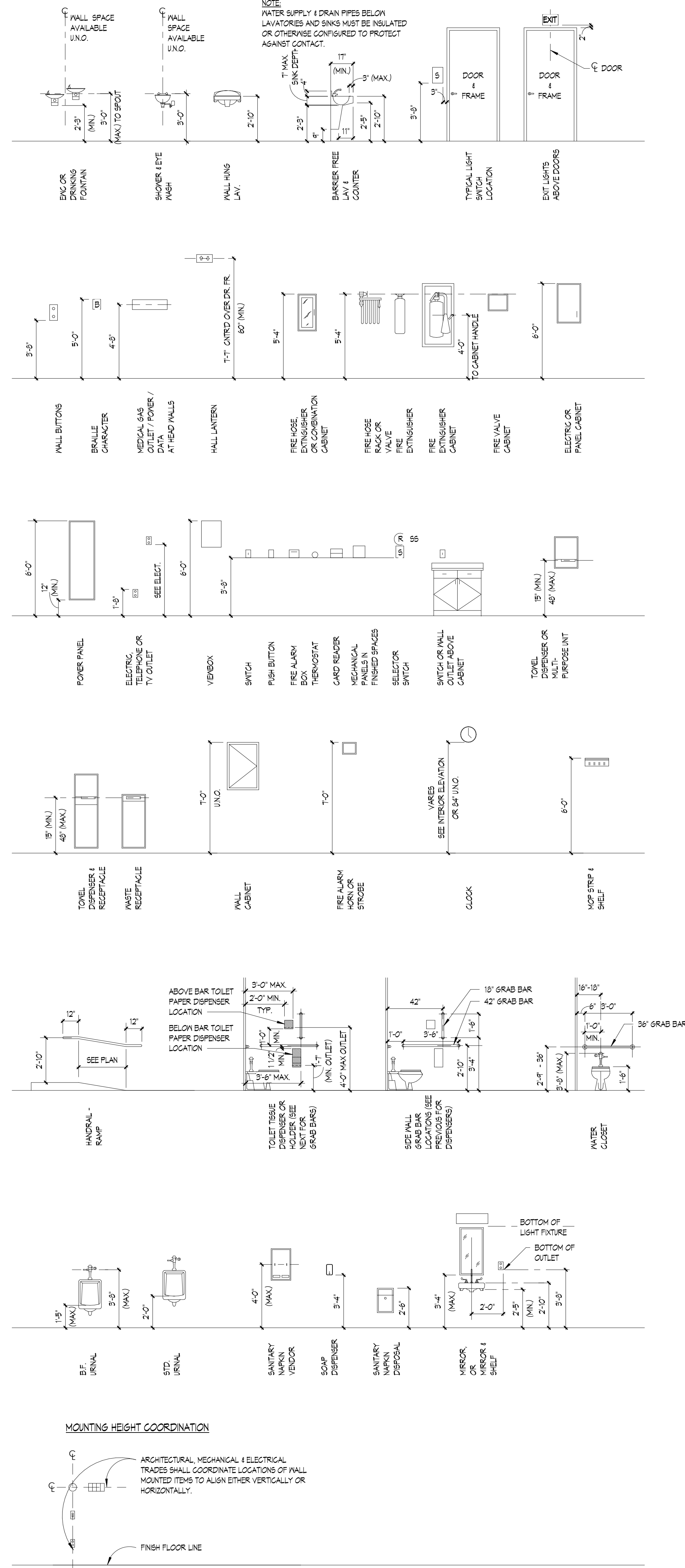
JOB NO. 2616.05  
SHEET TITLE  
**FIRST FLOOR COMPOSITE PLAN**

SHEET NO.  
**A0.1**

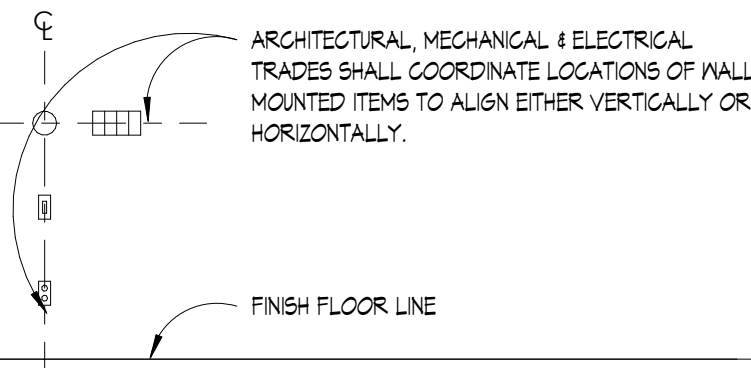
KINGSCOTT ASSOCIATES, INC. KALAMAZOO, MICHIGAN



MOUNTING HEIGHTS (U.N.O.)



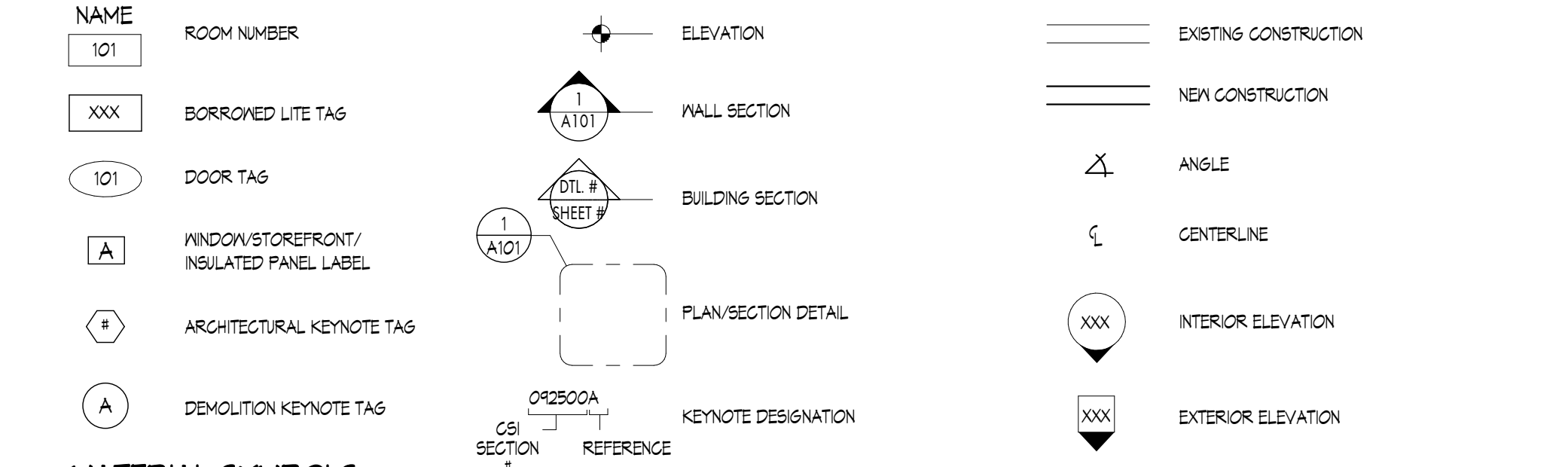
MOUNTING HEIGHT COORDINATION



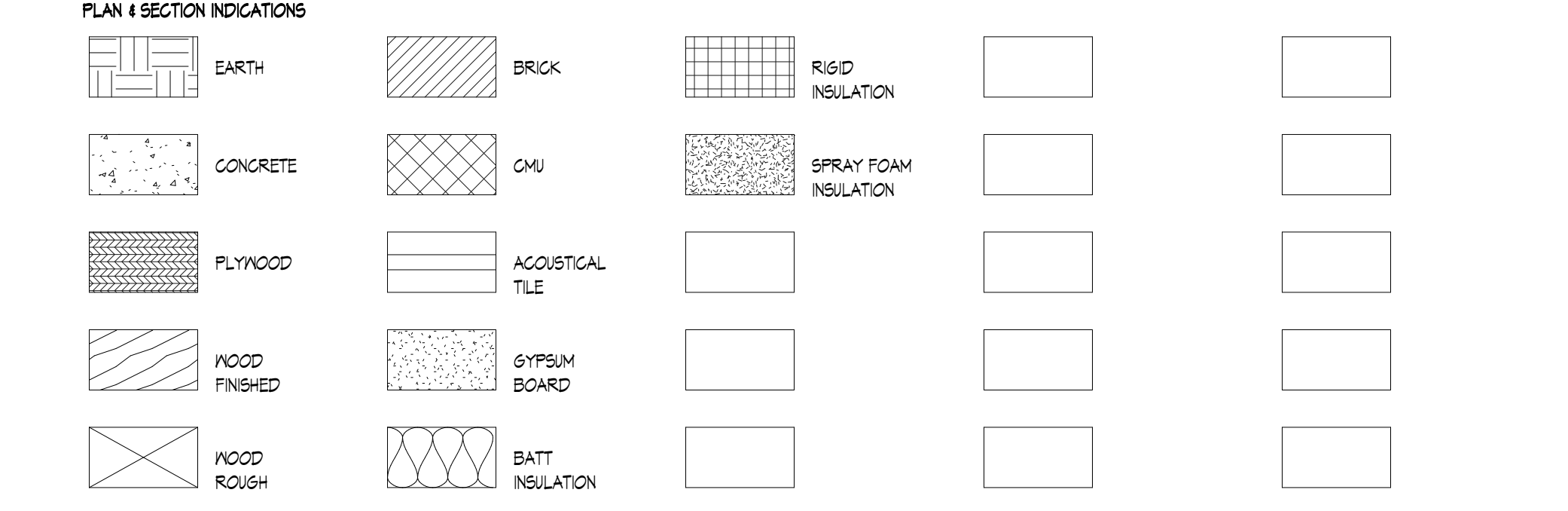
ABBREVIATIONS

ADJ	ADJACENT	F.S.	FULL SIZE	PT	POINT
AFF	ABOVE FINISHED FLOOR	FT	FEET	PVC	POLYVINYL-CHLORIDE
AL / ALUM	ALUMINUM	FTG	FOOTING	1/4 RD	QUARTER ROUND
ALT	ALTERNATE	FURN	FURNITURE	R / RAD	RADIUS
APC	ACOUSTICAL PANEL CEILING	FRP	FIBERGLASS REINFORCED PANEL	RAF	RESILIENT ATHLETIC FLOOR
APPROX	APPROXIMATE	GAL	GALLON	RB	RESILIENT BASE / RUBBER BASE
ARCH	ARCHITECT / ARCHITECTURAL	GALV	GALVANIZED	RD	ROOF DRAIN
AVG	AVERAGE	GB	GRAB BAR	REC	RECESSED
AWP	ACOUSTICAL WALL PANEL	GC	GENERAL CONTRACTOR	RECT	RECTANGLE / RECTANGULAR
BD	BOARD	GEN	GENERAL	REF	REFERENCE
BF	BARRIER FREE	GL	GLASS	REINF	REINFORCED / REINFORCEMENT
BFFT	BELOW FINISHED FLOOR	GOVT	GOVERNMENT	REM	REMOVEABLE
BFBST	BARRIER FREE STONE THRESHOLD	GYP	GYPSUM	RESIL	RESILIENT
BL	BORROWED LIGHT	HD	HAND	REQD	REQUIRED
BLDG	BUILDING	HDWR	HARDWARE	REV	REVISION
BLK	BLOCK	HDWD	HARDWOOD	RF6	ROOFING
BM	BEAM	HM	HOLLOW METAL	RF6	RUBBER FLOOR SHEET
BN	BULLNOSE	HRZ	HORIZONTAL	RFT	RUBBER FLOOR TILE
B.O.	BY OWNER	HP	HIGH POINT	RSH	ROUGH
BOD	BOTTOM OF DECK	HPC	HIGH PERFORMANCE COATING SYSTEM	RM	ROOM
BOX	BOTTOM OF STEEL	HR	HOUR	RO	ROUGH OPENING
BOT	BOTTOM	HT	HEIGHT	RSTA	RESILIENT STAIR TREAD ACCESSORY
BP	BEARING PLATE	ID	INSIDE DIAMETER	RT	RESILIENT TRANSITION
BRG	BEARING	IN	INCH	S	SOUTH
BSMT	BASEMENT	INCL	INCLUDE	SAF	SAFETY
CAB	CABINET	INFO	INFORMATION	SC	SEALED CONCRETE
CAP	CAPACITY	INSUL	INSULATION	SCD	SCHEDULE
CB	CHALKBOARD	INT	INTERIORS	SECTN	SECTION
CJ	CONTROL JOINT	JAN	JANITOR	SECY	SECRETARY
CL	CENTER LINE	JC	JANITOR CLOSET	SEQ	SEQUENCE
CLG	CEILING	JCT	JUNCTION	SHT	SHEET
CLO	CLOSET	JT	JOINT	SIM	SIMILAR
CLR	CLEAR	KIT	KITCHEN	SPEC	SPECIFICATIONS
CMU	CONCRETE MASONRY UNIT	KP	KICK PLATE	SPP	SOUNDPROOF
CNTR	COUNTER	KS	KNEE SPACE	STL	STEEL
COL	COLUMN	L	LENGTH	SPM	SINGLE FLY MEMBRANE
CONC	CONCRETE	LAB	LABORATORY	SQ	SQUARE
CONST	CONSTRUCT OR CONSTRUCTION	LB	FOUND	SS	STAINLESS STEEL
CONT	CONTINUOUS	LKR	LOCKER	STA	STATION
CONTR	CONTRACTOR	LN	LINEAR	STD	STANDARD
COR	CORRUGATED	LK	LOCK	STL	STEEL
CORR	CORRIDOR	LLH	LONG LEG HORIZONTAL	STOR	STORAGE
CPT	CARPET	LLV	LONG LEG VERTICAL	STR	STRUCTURAL
CR / CLRM	CLASSROOM	LONG	LONGITUDINAL	SUB	SUB FLOOR
CS	COUNTER SINK	LP	LOW POINT	SUSP	SUSPENDED
C/S	CERAMIC TILE FLOOR	MAT / MATL	MATERIAL	SYM	SYMMETRICAL
CTR	CENTER	MAX	MAXIMUM	ST / STOR	STORAGE
CTM	CERAMIC TILE MALL	MB	MARKERBOARD	SV	SHEET VINYL FLOORING
CTN	CENTRAL	MFR	MANUFACTURER	T	TOILET
CTY	CUSTOMER	MIN	MINIMUM	T&G	TONGUE & GROOVE
CU YD	CUBIC YARDS	MISC	MISCELLANEOUS	TA	TOILET ACCESSORY
CYL	CYLINDER	MO	MASONRY OPENING	T&B	T&B BOARD
DBL	DOUBLE	MS	METAL SHELVING	TC	TOP CHORD
DEPT	DEPARTMENT	MTD	MOUNTED	TCX	TOP CHORD EXTENSION
DET	DETAIL	MT	METAL TRANSITION	TEL	TELEPHONE
DIA	DIAMETER	MNL	METAL MARDROBE LOCKER	TEMP	TEMPERATURE
DIAG	DIAGONAL	N	NORTH	THK	THICK
DIM	DIMENSION	NG	NOT IN CONTRACT	TOB	TOP OF BEAM
DIR	DIRECTORY	NO	NUMBER	TOF	TOP OF FOOTING
DN	DOWN	NTS	NOT TO SCALE	TOJ	TOP OF JOIST
DR	DOOR	OD	OUTSIDE DIAMETER	TOL	TOP OF LEDGE
DS	DOWNSPOUT	OFD	OVERFLOW DRAIN	TOM	TOP OF MASONRY
DWG	DRAWING	OFF	OFFICE	TOS	TOP OF STEEL
E	EAST	OH	OVERHAED	TON	TOP OF WALL
EA	EACH	OP	OPERABLE PARTITION	TS	TUBE STEEL
EL	ELEVATION	OPNG	OPENING	TV	TELEVISION
EJ	EXPANSION JOINT	OPF	OPPOSITE	TYP	TYPICAL
ELEV	ELEVATOR	P / PT	PAINT	TZ	TERRAZZO
EMER	EMERGENCY	PART	PARTITION	TZT	TERRAZZO TILE
ENCL	ENCLOSURE	PC	POLISHED CONCRETE	UNFIN	UNFINISHED
ENT	ENTRANCE	PERF	PERFORATED	UNO	UNLESS NOTED OTHERWISE
EQ	EQUAL	PL	PLATE	VBS	VOLLEYBALL STANDARD
EQUIP	EQUIPMENT	PLAM	PLASTIC LAMINATE	VCT	VINYL COMPOSITION TILE
EST	ESTIMATE	PLAT	PLATFORM	VDB	VISUAL DISPLAY BOARD
EX	EACH WAY	PLVD	PLYWOOD	VERT	VERTICAL
EX / EXIST	EXISTING	POL	POLISH	VEST	VESTIBULE
EXP	EXPOSED	P.P.M.	PARTS PER MILLION	VIF	VERIFY IN FIELD
EXPN	EXPANSION	PR	PREFAB	VIN	VINYL
EXT	EXTERIOR	PRFAB	PREFABRICATED	VOL	VOLUME
F	FAHRENHEIT	PREFIN	PREFINISHED	VRB	VENTER RUBBER BASE
FB	FACEBRICK	PROJ	PROJECT	W	WEST
FEN	FOUNDATION	PSE	PROJECTION SCREEN - ELECTRIC	W/	W/
FE	FIRE EXTINGUISHER	PSM	PROJECTION SCREEN - MANUAL	WAF	W/ID ATHLETIC FLOOR
FEG	FIRE EXTINGUISHER CABINET	PSF	POUNDS PER SQUARE FOOT	WB	WOOD BASE
FH	FULL HEIGHT	PSI	POUNDS PER SQUARE INCH	WC	WALL COVERING
FHC	FIRE HOSE CABINET	FR	FRAME	WD	WOOD
FIG	FIGURE	FRFP	FIREPROOF	W/O	WITHOUT
FIN	FINISH			W/P	WORKING POINT
FIX	FIXTURE			W/PF	WATERPROOF
FL / FLR	FLOOR			WT	WEIGHT
FLEX	FLEXIBLE			YD	YARD
FR	FRAME				
FRPF	FIREPROOF				

ARCHITECTURAL SYMBOLS



MATERIAL SYMBOLS



PATTENGILL MODULAR CLASSROOM BUILDING

LANSING SCHOOL DISTRICT  
815 North Fairview Avenue, Lansing, MI



ISSUANCES	DATE
BPO3 - ADDENDUM 01	05.10.2024



KEY PLAN

JOB NO. 2616.05  
SHEET TITLE  
DATA SHEET  
SHEET NO.  
**G0.2**  
KINGSCOTT ASSOCIATES INC. KALAMAZOO, MICHIGAN

THESE DRAWINGS AND THE WORK REPRESENTED THEREIN ARE THE PROPERTY OF KINGSCOTT ASSOCIATES INC. AND ARE NOT TO BE REPRODUCED OR TRANSMITTED IN ANY FORM OR BY ANY MEANS, ELECTRONIC OR MECHANICAL, INCLUDING PHOTOCOPYING, RECORDING, OR BY ANY INFORMATION STORAGE AND RETRIEVAL SYSTEM.



## RFI #10: Metal Lockers

<b>Status</b>	Closed on 05/10/24		
<b>To</b>	Sami Szeszulski (Kingscott) Vince Murad	<b>From</b>	Andrew Dobbs (The Christman Company (LAN)) 208 N. Capitol Ave Lansing, Michigan 48933-1357
<b>Date Initiated</b>	May 9, 2024	<b>Due Date</b>	May 13, 2024
<b>Location</b>		<b>Project Stage</b>	Bidding
<b>Cost Impact</b>		<b>Schedule Impact</b>	
<b>Spec Section</b>	105113 - METAL LOCKERS	<b>Cost Code</b>	
<b>Drawing Number</b>		<b>Reference</b>	
<b>Linked Drawings</b>			
<b>Received From</b>			
<b>Copies To</b>			

### Activity

<b>Question</b>	<p><b>Question from Andrew Dobbs The Christman Company (LAN) on Thursday, May 9, 2024 at 11:22 AM EDT</b></p> <ul style="list-style-type: none"> <li>• Specification 105113 has both all-welded and knockdown assembly stated through it. Please confirm if lockers are to be all-welded or knockdown.</li> <li>• Please confirm lockers bases - wood, metal, concrete?</li> </ul>
<b>Official Response</b>	<p><b>Response from Vince Murad on Thursday, May 9, 2024 at 03:48 PM EDT</b></p> <p>Lockers to be factory welded, then installed on site.          Provide a wood frame base. The would base should consist of regular 2x4 framing with 1 layer of 1/2" plywood installed on top of the wood framing to allow for 4" rubber base (RB-1) installation.</p>
<b>All Replies</b>	<p><b>Response from Vince Murad on Thursday, May 9, 2024 at 03:48 PM EDT</b></p> <p>Lockers to be factory welded, then installed on site.          Provide a wood frame base. The would base should consist of regular 2x4 framing with 1 layer of 1/2" plywood installed on top of the wood framing to allow for 4" rubber base (RB-1) installation.</p>

**Wood base to be provided and installed by WC20.**

Project Name	<b>Pattengill BP3</b>	Work Category	<b>20, 22, 27, 28</b>
Meeting Date & Time	<b>5/2/24 @ 9am</b>	Meeting Location	<b>Pattengill Elementary</b>

## Meeting Purpose:

- To communicate clearly defined work scope, quality standards, and anticipated schedule to subcontractors.
- Providing this information improves the likelihood that bids will be consistent with the owner's and The Christman Company's quality standards and schedule expectations.

## Meeting Agenda:

### 1. Introduction

- a. Bid documents list
  - i. Project Manual
  - ii. Kingscott Drawings
    - I. Vesta Modular Drawings
  - iii. Kingscott Specification

### 2. General Quality Expectations

- a. Why the owner is building this project
- b. What is important to the owner, building occupants, etc.

### 3. Schedule Expectations

- a. Total timeline
  - i. 4/26/24 – 10/11/24
- b. Phasing
- c. Milestone dates (highlight expectations for impact of weather conditions)
  - i. WC 20 – General Trades
    1. Lockers, VDBs, Signage 8/23/24 – 9/5/24
    2. Finish Acoustical Ceilings 8/29/24 – 9/4/24
  - ii. WC 22 – Flooring
    1. Flooring 9/6/24 – 9/19/24
  - iii. WC 27 – Mechanical/Plumbing
    1. Underground MEP 7/5/24 – 7/18/24
    2. Set Units/Final Connections 8/12/24 – 8/23/24
    3. Gas Main In Corridor 8/19/24 – 8/28/24
  - iv. WC 28 – Electrical
    1. Underground MEP 7/5/24 – 7/18/24
    2. Final MEP Connections 8/12/24 – 8/23/24
    3. Low Voltage/Fire Alarm 8/12/24 – 8/23/24

### 4. Work Scope

- a. Included and excluded activities
  - i. WC 20 – General Trades
    1. Visual Display Boards, Lockers, Signage, Roller Window Shades
    2. Ceiling grid in the corridor and at building seams
    3. Parapet top of wall assembly (plywood, blocking, coping, sheet metal flashing)
    4. Misc Painting paid for via your allowance
  - ii. WC 22 – Flooring
    1. Flooring
      - a. Trim around floor access doors
  - iii. WC 27 – Mechanical & Plumbing
    1. Roof Flashing at penetrations (curbs, vents, etc.)
    2. Gas Piping
    3. Plumbing that is below the floor, in the crawl space

4. Mechanical and Plumbing connections between modular sections (ductwork, fire suppression)
    - a. Fire suppression riser and fire department connection is base bid. Connections between modular sections is to be tracked T&M and funded from allowance due to no layout drawings.
  5. SC Tech for controls
  6. Architectural Louvers
  - iv. WC 28 – Electrical
    1. Final Connections at Roof Top Units and Service Receptacles
    2. Fire Alarm System
    3. Neutral/Ground System
    4. Technology Scope
      - a. Basically all interior wall symbols by Vesta Modular while all ceiling, exterior wall and existing building symbols by WC 28.
      - b. EPS is current company for Pattengill's security system
  - b. Quality expectations for workmanship and results
- 5. Project Specifics**
- a. Contractor amenities
    - i. Parking – In existing parking lot on north end
    - ii. Laydown – Very limited laydown area.
    - iii. Restrooms – Christman will provide portable toilets
    - iv. Utilities – No existing water or power
  - b. Contractor requirements (permits, delivery scheduling, clean up, dress code, smoking)
    - i. Permits – SESC Permit held by TCC, installation maintenance and modifications by WC02.
    - ii. Clean Up – Street Sweeping as required by CM/minimum daily.
    - iii. Smoking – No tobacco use on Lansing School District property.
    - iv. Work Hours – Need to abide by Lansing Noise Ordinances. Any excessive noise and vibration work will need to be coordinated with Christman before work begins to confirm school does not have any issues.
  - c. Building occupancy
    - i. Building will be occupied for phase I work, owner anticipates construction noise within reason.
  - d. Safety requirements
- 6. Bid Procedures**
- a. Due date, time, and location
    - i. 5/16/2024 @ 2:00PM at Lansing School District Administration Building
  - b. Addenda requirements
  - c. Bond requirements
    - i. BID BOND REQUIRED
    - ii. Break out pricing for payment and performance bond
  - d. Included and voluntary alternates
  - e. Tax status
  - f. Allowances available
  - g. Contact person for questions
    - i. RFIs to be submitted to [projects@lansingschools.net](mailto:projects@lansingschools.net) due 5/8/24
    - ii. Andrew Dobbs (Christman Company – Project Manager) 517-230-5953
- 7. Questions**
- 8. Walk Through**

