



Lansing[®]
School District

2017-18 | ANNUAL REPORT



AIMSweb an assessment administered to K-12 students, three times a year, to determine risk level in reading and math as well as measure student growth.

CRPBIS Culturally Responsive Positive Behavior Intervention and Support is an educational initiative grounded in local to global justice theory with the ultimate goal of educational systems change.

Encircle Program is an academic support program for students who are out of school on long-term suspension.

GoMath is a grades K-8 mathematics curriculum.

iCollaborate supports the improvement of instruction through classroom observation and data analysis.

IlluminatED is a software system that provides educators with real-time student data.

INSPECT is an assessment building tool that is included in the IlluminatED Data Platform.

Multi-Tiered System of Support supports student needs ranging from all students to small group intervention to targeted student support.

Pacing Guides are guidelines that specify the curriculum and the pace at which it should be taught.

PEACE Talks are a recorded series sponsored by Project PEACE that focus on classroom management, culture and climate, and mental health accessible by all staff throughout the academic year.

Priority Schools are schools identified by the Michigan Dept. of Education as low-performing schools.



TABLE OF CONTENTS

LETTER FROM THE SUPERINTENDENT	01
STUDENT ACHIEVEMENT	02-03
LEARNING ENVIRONMENT	04-07
FACTS AND FIGURES	08-09
COMMUNITY OUTREACH	10-11
SUPPORT SYSTEMS	12-13
FINANCIAL STABILITY	14-15
BOND CONSTRUCTION UPDATES	16
THE LANSING PATHWAY PROMISE	17

2017-2018 BOARD OF EDUCATION

Rachel R. Lewis
President

Dr. Saturnino Rodríguez
Vice President

Dr. Bryan Beverly
Secretary

Shirley M. Rodgers
Gabrielle Lawrence
Treasurer

Dr. Farhan Bhatti	Gabrielle C. Lawrence
Dr. Nathan Burroughs	Missy Lilje
Amy Hodgin	Guillermo Z. López

Trustees

Yvonne Caamal Canul
Superintendent

EXECUTIVE TEAM

Mark Coscarella, Ed.D.
Teresa Szymanski
Delsa Chapman
Karlín Tichenor, Ph.D.
Ben Botwinski
Camela Diaz, Ed.D.
Eldon McGraw

LETTER FROM THE SUPERINTENDENT

Dear Friends,

We talk about dreams a lot in the Lansing School District. Why? Because we think there's nothing more important than delivering on the ambitions each and every one of our students brings with them to school every day.

But we also know dreams aren't enough. Hard work is needed, along with an eye for opportunity, the ability to innovate, and plain, old-fashioned savvy. That's what our district brings to the table each and every day as we achieve the following core goals:


- All students will achieve or exceed state performance targets and graduate opportunity ready.
- The district will provide a safe and nurturing learning environment.
- The district will maintain and grow strong relationships with greater Lansing's diverse communities, agencies, organizations, and businesses.
- The district will identify, improve, and implement effective and efficient support systems.
- The district will monitor and adjust resources in order to maintain and improve financial stability.

This year, we are pleased to share our progress toward these goals, with annual objectives detailed in the following pages.

If you would like more details about our work – or, better yet, to become personally involved as a partner or volunteer – we invite you to visit our website at www.lansingschools.net or call us at (517) 755-1043.

Here in Lansing, dreams matter. We hope you'll join us in helping make them happen.

Sincerely,


Yvonne Caamal Canul
Superintendent



STUDENT ACHIEVEMENT

DISTRICT GOAL AREA #1 - All students will achieve or exceed state performance targets and graduate opportunity ready.

Improve data-driven instruction by regularly utilizing various sources, including iCollaborate, student and behavioral data.

- iCollaborate in its 5th cycle; school level Leadership Teams analyze data and modify instruction
- School improvement plan reviews of all schools (2nd yr)
- Implemented curriculum-based assessments for GoMath
- Implemented universal screeners (AIMSweb) as part of a Multi-Tiered System of Support
- Piloted a Kindergarten readiness assessment
- Year-long pilot of new ELA Series, *Journeys* - selected in May, 2018

Create district wide coherence and improve student learning by implementing curriculum Pacing Guides and formative assessments.

- Pacing Guides for Kindergarten - 12th grade have been developed and are being utilized
- AIMSweb formative assessment continues to be used to determine student growth
- Launched GoMath district wide
- Piloted use of IlluminatED and INSPECT assessment building instrument
- Piloting Panorama
- Piloting NWEA - assessment system





Identify and implement models and partnerships that will increase students' engagement in career preparation.

- Launched the Summer Explorers' Program
- Launched WKAR play-pads initiative
- YMCA program expansion
- Emergent BioSolutions support of Sexton Annex
- MSU Department of Plant, Soil, and Microbial Sciences STEM- FEE (Food, Energy, and Environment) Academy SY 17-18
- Future Nurses Club of Michigan State University
- AIM High Mentoring program through the City of Lansing and MSU
- Young Educators Society Michigan Chapter SY 17-18 to support the Future Teachers Academy at Eastern High School
- High School Advantage Program in partnership with LCC, Davenport University, and Eaton RESA
- Expanded support of grade specific career exploration experiences by assigning Pathfinders at all schools
- SodexoMAGIC partnership with Willow's culinary program

Increase student achievement proficiency and on-time graduation rates.

- Nine priority schools left the bottom 5%
- Five priority schools released from priority school list, two additional priority schools remained out of the bottom 5% for the 2nd straight year
- Signed Partnership Agreement with MDE, IISD
- Dropout rate fell from 30% in 2015-2016 to 19% in 2016-2017
- Graduation Alliance implemented

LEARNING ENVIRONMENT

DISTRICT GOAL AREA #2 - The district will provide a safe and nurturing learning environment

Identify and adopt models for improving school climate and culture that include professional learning and problem-solving approaches.

- CRPBIS Training District wide
- Trauma-informed Schools professional learning
- Mental Health Summer Summit
- PeaceTalks
- Communities in Schools - Sexton, Willow, Attwood, Averill
- Professional learning for secretaries in school culture and student health policies
- Student Support Specialists in every school
- Principals and Student Support Specialists receive Adaptive Schools Training
- Public Safety Officers attended Mental Health First Aid training





Implement programs and protocols that will significantly reduce behavior referrals and out-of-school suspensions.

- Emergency Restraint and Seclusion Steering Committee to train and monitor district protocols and procedures
- Creation of a discipline dashboard to track behavior and antecedents through Synergy
- Roundtable Discussions for administrators to review culture/climate, behavior processes protocols
- Train Student Services Specialists in Rethinking Discipline and MIBLISI
- Implementation of 7 Factors Protocol for Discipline Referrals > than 10 days of school
- Reduction of suspensions to 11.95% (down from 20% in 2012)
- No expulsions in SY18
- District wide professional learning on trauma-sensitive schools
- New Student Handbook developed by students: video, hard copy
- Develop Behavior Intervention Teams/ Problem solving teams in all schools
- "First Days of Schools" booklet provided to build positive relationships



Implement programs, policies, and protocols that will significantly improve district morale and community perception of the district.

- Launched 2nd Summer Explorers' Program
- Implemented a trauma-informed newsletter district-wide
- Whole School, Whole Child, Whole Community (WSSC) review committee for evidence-based models in schools
- Co-develop and participate in the Mid-Michigan Trauma Collaborative
- Implemented 7 Factors protocol based on Michigan Law change in zero tolerance
- Required 7/8th grade Human Development and Sex Education course
- Implemented Employee Assistance Program
- Development of new health policies
- Free immunizations in partnership with ICHD at Kidzapalooza
- Year one of REAP/TSL grant





Implement behavior prevention, intervention, and supports in all schools.

- Continued to place Student Support Specialists in all schools
- Launched Facebook pages for Willow and Pleasant View
- Restorative Justice in all schools
- CRPBIS
- Train all Student Support Specialists in Michigan Model and Second Step
- Purchase and distribute Michigan Model and Second Step curricula for schools
- Realign social work services in all schools
- Implement 7 Factors protocol based on Michigan Law change in zero tolerance
- TLO's visit at least one elementary school a day



3 EDUCATIONAL PATHWAYS

TO ENSURE
CAREER AND COLLEGE READINESS
PG 17 FOR MORE INFORMATION



ENROLLMENT BY GRADE

STUDENTS ENROLLED 53% MALE 47% FEMALE

9 th Grade 1056	1 st Grade 936	3 rd Grade 839	4 th Grade 810	6 th Grade 774	8 th Grade 744	11 th Grade 679
Kindergarten 988	2 nd Grade 856	10 th Grade 841	5 th Grade 792	7 th Grade 773	12 th Grade 553	PreK 390

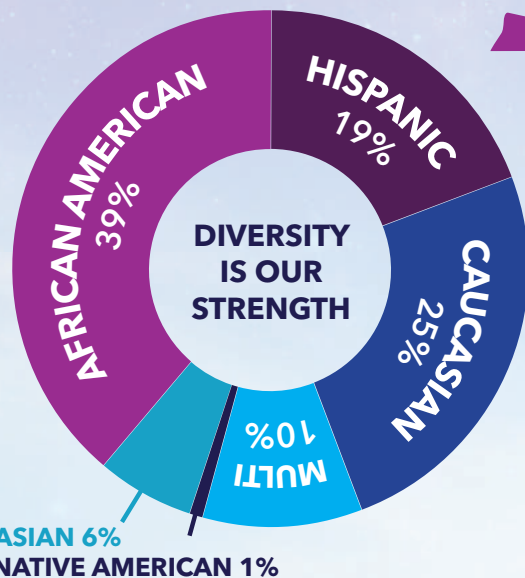


24 STUDENTS PER TEACHER

16%
OF OUR
STUDENT
POPULATION
ARE ENGLISH
LANGUAGE
LEARNERS

مكيلي مع مال سلا
Ciao Olá
Hello
안녕하십니까
Aloha Salut
Здраво

20%
OF OUR
STUDENT
POPULATION
IS BILINGUAL



POPULAR STUDENT LANGUAGES BY STUDENT COUNTRY OF ORIGIN*

BY NUMBER OF STUDENTS



CONGO (193)



IRAQ (133)



NEPAL (101)



BURMA (91)



SOMALIA (77)



TANZANIA (72)



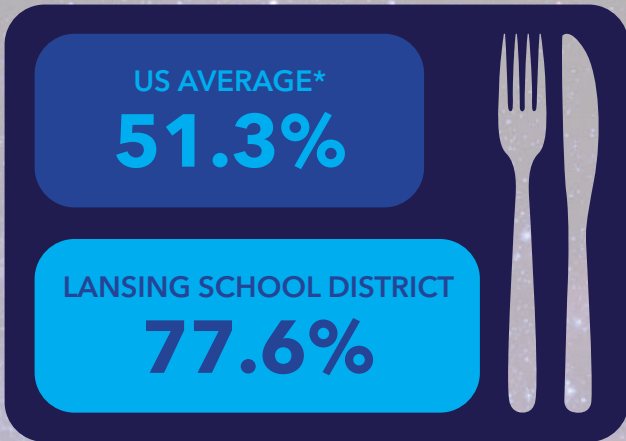
KENYA (65)



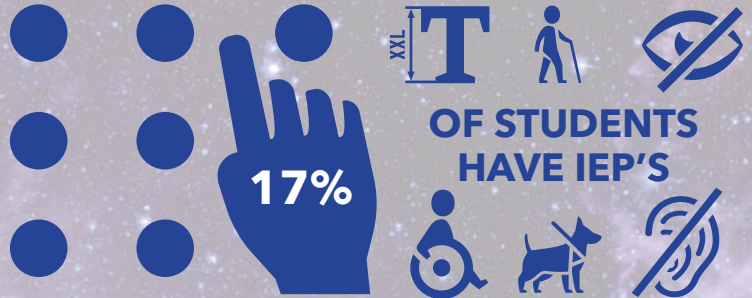
THAILAND (53)

*Not including English speaking, American born students.

STUDENTS ELIGIBLE FOR SUPPLEMENTAL SERVICES



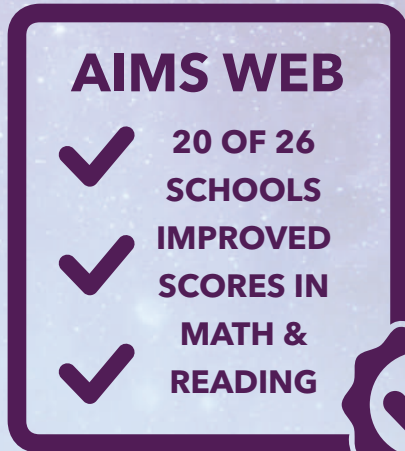
*Source: USDA FNS



DISABILITIES FOR WHICH THE DISTRICT ACCOMMODATES



LANSING SCHOOL DISTRICT STUDENTS HAD AN **88.06% ATTENDANCE RATE**



UNIVERSAL SCREENING ASSESSMENT



RECEIVED ACADEMIC, SOCIAL AND/OR BEHAVIORAL NEEDS ASSISTANCE FROM STUDENT SUPPORT SPECIALISTS



265 TEACHERS ARE HIGHLY EFFECTIVE

A+ / A

320 TEACHERS ARE EFFECTIVE

VISIT LANSINGSCHOOLS.NET FOR MORE FACTS & FIGURES!

COMMUNITY OUTREACH

DISTRICT GOAL AREA #3 - The district will maintain and grow strong relationships with greater Lansing's diverse communities, agencies, organizations, and businesses.

Explore and expand opportunities for the greater Lansing community to engage with the district.

- Eastern High School 90th Anniversary Party
- Bond community outreach meetings
- Bond Groundbreaking Ceremonies at Post Oak, Eastern, and Eastern Fields
- Lansing Promise Annual Dinner
- Baccalaureate at Union Missionary
- Hosted State of the City at Pattengill
- Created LSD Welcome Center at Elmhurst - Named in honor of Dr. Eva L. Evans
- Publish weekly survey on district web site to increase engagement on topical issues
- Annual District Showcase
- Kidzapalooza
- Love Lansing event

Improve communication with Lansing's diverse communities, including translation into other languages.

- Increased Channel 21 programming (New program Teacher Stories)
- Updated website with bond construction and Lansing Pathway Promise
- Disseminated four community-wide newsletters
- Created Dream Big booklet
- Created Absolute Transformation - article, booklet, video
- Created Adult Ed booklet and posters in English and Spanish
- Purchased 15 ads for program books sponsored by community organizations
- Implemented web accessibility standards to assist web visitors with special needs
- Published advertisements with Adelante (including in Spanish), Chronicle, Juneteenth, Chicano Latino Advisory Committee, NAACP awards, MLK ceremony, and César Chávez dinner





Explore and expand opportunities for grants, donations, and partnerships in order to increase learning options for students.

- Awarded SIG V for \$3.2 million over five years
- Awarded Early Childhood Literacy Grant for \$400,000 over one year
- Awarded for the Teacher and School Leaders Grant (TSL) \$9 million/year for five years
- Applied for Safe Routes to Schools Grant up to \$25,000 over one year
- Awarded 2017 Magnet Grant for six schools for five years
- Awarded Emergent BioSolutions \$10,000 Charitable Giving Fund for J.W. Sexton High School STEM2 Program
- Awarded increase funding to serve homeless students across county (served 800+ students)
- Implemented a Foster Care liaison
- Awarded Priority Schools' Grant - \$400K



Explore and identify the approaches that will significantly increase positive family engagement.

- Increased attendance at PCAC meetings for the 17-18 school year
- Implement Family Liaisons in Priority Schools
- Kidzapalooza
- District Showcase
- Graduation Video
- Bond Groundbreaking Ceremonies
- Eastern 90th Anniversary
- Baccalaureate

SUPPORT SYSTEMS

DISTRICT GOAL AREA #4 - The district will identify, improve, and implement effective and efficient support systems.

Complete a successful bond campaign in order to improve and reconfigure the district's facilities and provide students with 21st Century learning environments.

- Bond Groundbreaking Ceremonies
- Construction beginning at Post Oak, Eastern, Eastern Fields and Dwight Rich
- Establish committee to explore Sinking Fund option for May 2019 to harden security systems
- Bi-weekly Bond Steering Committee meetings throughout the year
- Board Facilities Committee to review all issues regarding facility usage, sale, upgrades
- Lansing Pathway Promise bond construction upgrades at Averill and Riddle completed

Update and/or replace outdated technology in order to provide students and staff with 21st Century learning tools.

- Upgrade printing equipment to increase quality, lower cost for equipment
- Updated district wide phone system in SY18
- Clevertouch display boards for 21st Century teaching and learning
- Pilot implementation of Panorama, student dashboard





Develop and implement rewards and consequences in order to reduce staff absenteeism.

- New contract negotiations rewarded attendance and enrolling employee children in the district (principals and assistants)
- District wide tracking system of daily absences
- Letters to staff with days taken/left
- Teacher attendance incentive
- Assistant attendance incentive
- Performance incentives for teachers and principals through TSL grant, attendance and performance rating as considerations for stipend
- Contract negotiations successful, new salary structure implemented for LSEA

Maximize personnel resources by maximizing staffing efficiencies in all departments.

- Contract with Battelle for Kids to analyze and streamline Human Resources functions and processes
- Update existing surveillance camera systems and installed new surveillance systems at all elementary schools and ancillary buildings
- Relocate Public Safety to increase efficiencies, alignment
- Invest and upgrade at Ebersole Center - new mobile home, cabin, house upgrades
- Realign central office organizational chart to maximize financial coherence

FINANCIAL STABILITY

DISTRICT GOAL AREA #5 - The district will monitor and adjust resources in order to maintain and improve financial stability.

Update district infrastructure by implementing technology solutions to improve efficiencies in finance, human resources, and student information management systems.

- Expand use of eFinance by adding accounts receivable to system creating customer invoices and statements and track vendor accounts
- Expand use of eFinance by utilizing Employee Timesheet module in lieu of paper timesheets
- Set up and utilize Electronic Fund Transfers to pay vendors
- Provide training to current/new employees for all tech systems, new technology
- Expand the use of Applitrack for a more efficient application and interview process
- Pilot implementation of Panorama
- Let'sTalk! Dialogue options

Develop and implement strategies for increasing student enrollment.

- Implemented comprehensive marketing plan - Magnet, open choice, summer school, Kindergarten Roundup, Kidzapalooza, District Showcase
- Multiple ads - TV, radio, billboard, periodicals
- Adding athletic options for 7th and 8th graders in all schools
- Streamlined process for student transfer requests
- Implemented district-wide choice
- Implemented the Lansing Pathway Promise





Identify and implement strategies that will increase the district's fund balance.

- Presented balanced budget with fund balance for SY18
- Based budgets on conservative estimates on enrollment, off by 22 FTE in fall 2017
- Five years of exemplary audits





Bond Progress Loading...

After the passage of the Lansing Pathway Promise Bond Proposal in 2016, we got right to work on the projects! Here are a few of the updates:



- **Averill** had \$1,400,000 invested into new windows, an updated heating system, new classroom finishes and furniture.
- **Riddle** had \$1,600,000 invested into new windows, an updated lighting system, a new entry lobby, new classroom finishes and furniture.
- **The New Pattengill** (formerly Fairview) is scheduled to open in August of 2018. It will be two and a half times larger than it was prior to the beginning of construction with an investment of over \$17,000,000.
- **Post Oak** broke ground in 2018 and will consist of four new classrooms and a new multi-purpose room with a kitchen. Nearly \$5,000,000 will have been invested in this school when it is completed in the summer of 2019.
- **The New Eastern High School** (formerly Pattengill) broke ground in the spring of 2018 and scheduled to be completed in the summer of 2019. The \$14,000,000 investment will include a new science wing with four classrooms, a new clinic, a gymnasium, locker room and fitness room. The parking lot will be expanded and re-configured to accommodate the change from a middle school to a high school.
- **Eastern Fields** are being built to replace existing athletic venues and in support of the Don Johnson Fieldhouse – and will represent \$8,000,000 of new investment. A new 1500 seat football/soccer stadium with an eight lane track is underway along with new parking spaces for all of the athletic facilities at this site. The existing tennis courts will be rebuilt and there will be new softball field. Serving all of these facilities will be new restrooms, concessions, and ticketing structures.
- **Dwight Rich** construction began in June 2018 with a \$14,000,000 renovation that will allow the school to re-open in 2019 as the Dwight Rich School for Visual and Performing Arts. The auditorium will be completely renovated, a new K-1 wing will be created in existing space at the front of the school, and the restrooms throughout the school will be remodeled. There will be upgrades to finishes in the cafeteria, the central office, and the classrooms. Some site work will be done to support a new student drop-off and pickup layout, and the school will undergo a complete mechanical system replacement, as well as a new roof.
- **Technology** upgrades included a new telephone system, an updated and more robust system to support wireless access for computers, tablets, and cell phones at all district buildings. For the work funded by the 2016 Pathway Promise Bond Issue, \$2,600,000 has been invested to provide more reliable phones and district-wide wireless access.
- New purchased items include large format, touch screen TVs that are interactive with student and teacher devices. Nearly \$2,300,000 will have been invested in this new, classroom focused technology at Attwood, Averill, Beekman, Cavanaugh, Cumberland, Elmhurst, Fairview, Forest View, Gier Park, Kendon, Lewton, Lyons, Mt. Hope, North, Post Oak, Reo, Riddle, Sheridan, Wainwright, and Willow.
- Nearly \$1,000,000 has been spent on updating the district's video surveillance system. A new and highly advanced software system for storing and searching video files has been purchased, along with hundreds of new cameras at all school buildings.



LANSING PATHWAY PROMISE | BY THE NUMBERS

Since Fall, 2012...



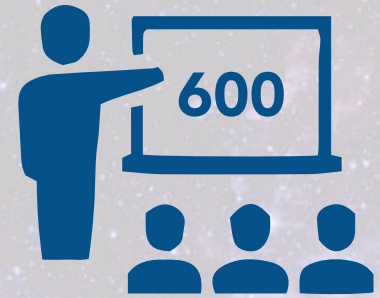
Promise Scholars have enrolled at MSU, LCC or Olivet College



Credits earned by Promise Scholars as of the 16-17 SY



Promise Scholars have earned a degree, certificate or have successfully transitioned to a four year program



Scholars are still in their first four years of learning or career training

\$1.7 MILLION DOLLARS

Have been invested in Lansing Students!

AND IT ALL STARTED HERE — AT THE LANSING SCHOOL DISTRICT!

In the Lansing School District, we believe that supporting big dreams with career pathways is the key to student success. Our career pathways are based on high-demand careers that will foster students' interests and skills – giving them the competitive edge in jobs, learning and life. In our district, students can start pursuing their dreams in their early years (K-3) with career exploration activities, begin to identify a career pathway in the middle grades (4-6) and receive real-world learning experiences in high school that will turn their dreams into a career opportunity by graduation. **Students who graduate will receive a FREE Lansing Promise Scholarship to pursue college and/or career training opportunities.**

CAREER PATHWAYS Health Sciences Human Services		CAREER PATHWAYS Arts & Communications Information Technologies		CAREER PATHWAYS Engineering & Advanced Manufacturing Insurance & Finance	
Eastern High School 7th-12th Grades Traditional High School & Career Readiness: Advanced Chinese Studies Future Teachers Academy International Baccalaureate (IB) Biotechnology Magnet (school within a school)		Everett High School 7th-12th Grades Traditional High School & Career Readiness: New Tech Magnet (school within a school) Visual & Performing Arts		Sexton High School 7th-12th Grades Traditional High School & Career Readiness: Skilled Trades STEM ² Early College Magnet (Science, Technology, Engineering, Mathematics & Manufacturing)	
Pattengill PreK-6 Biotechnology Magnet Academy	Post Oak* PreK-6 International Baccalaureate Chinese Immersion	Wexford Montessori PreK-8	Gardner K-8 International Magnet Academy	Attwood 4-6 New Tech Magnet Academy	Dwight Rich School of the Arts** K-6 Visual, Performing and Communication Arts Magnet
Lewton PreK-6 Spanish Immersion Global Studies Magnet	Mt. Hope 4-6 STEAM Magnet	Sheridan Road 4-6 STEM Magnet	North 4-8 Food, Energy and Environment		
Cumberland PreK-3	Gier Park PreK-3	Forest View PreK-3 Environmental Science	Lyons PreK-3	Cavanaugh PreK-3 STEM Magnet	Kendon PreK-3
Averill PreK-3 New Tech	Reo PreK-3	Riddle PreK-3	Willow PreK-3 Culinary Arts		

DISTRICTWIDE SPECIALIZED PROGRAMS *Beekman Center* Grades PreK-12+ *Woodcreek Achievement Academy* Grades 9-12

TO LEARN MORE ABOUT THE LANSING PROMISE VISIT LANSINGPROMISE.ORG



