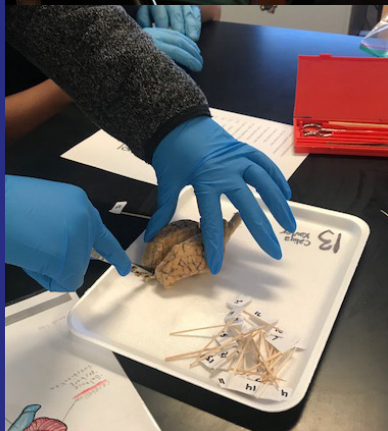




Eastern Biotechnical Magnet Academy is a program within Eastern High School's International Baccalaureate (IB) focus. It provides a unique and equitable learning experience for a diverse group of students through an integration of biotechnology into the core curriculum.

Driven by Project Lead the Way (PLTW) course electives with a Project-Based Learning (PBL) instructional approach, Eastern Biotechnical sets students on a path for college and career readiness in biotechnical fields, health sciences, and human services that impact people's lives both locally and globally.

Grades: 7-10 ('20-'21)  
Expanding to 7-12  
by 2022-23 SY.





## We Believe Our Students are Becoming Future Solution Finders Through:



At Eastern Biotechnical we offer courses like:

- Design & Modeling
- Medical Detectives
- Automation and Robotics
- Principles of Biomedical Science

so our students not only learn technical skills, but also learn to solve problems, think critically and creatively, communicate, and collaborate.

### Project Based Learning

Project Based Learning (PBL) allows students to experience course topics through active exploration and investigation of authentic, engaging, and complex real-world challenges and problems. This approach leads to a deeper understanding and greater retention rate of content knowledge - which ultimately makes them better able to apply what they learn to new situations. Students at Eastern Biotechnical actively engage with PBL projects - solving relevant problems that are important to them and their communities.

### International Baccalaureate

International Baccalaureate (IB) learner traits (Inquirers, Knowledgeable, Thinkers, Communicators, Principled, Open-Minded, Caring, Risk-Takers, Balanced and Reflective) go beyond intellectual development and academic success. They imply a commitment to help all members of the school community learn to respect themselves, others and the world around them.

### We Partner with the Best!



Eastern School: 517.755.1050  
Pupil Accounting: 517.755.2820

626 Marshall St.  
Lansing, MI 48912

Visit us online [www.lansingschools.net/easternbiotechnical](http://www.lansingschools.net/easternbiotechnical)