

**LANSING SCHOOL DISTRICT
CUSTODIAL, GROUNDS, AND
MAINTENANCE/REPAIR SERVICES**

REQUEST FOR PROPOSALS (“RFP”)

January 26, 2024

Addendum 3
Final Clarification Request Responses
& Information

RFP Walkthrough Final Q&A

Lansing School District Statement:

Multiple questions were posed regarding the current contract and CBA, with contractor and labor union. The agreement between the current contractor and labor union is between those two parties and cannot be released by the District. The District will also not answer any questions regarding the relationship with the current contractor.

1. What food equipment is on the asset list?
 - None - handled by food services management contractor
2. Who is responsible for the Kitchen Equipment, including Walk-in Cooler/Freezer? Refrigerators?
 - Food services management contractor
3. How many kids are at the school?
 - See RFP – Section 3
4. When was Eastern built?
 - 2007
5. When was Eastern renovated?
 - 2018
6. What new builds are coming?
 - Mt. Hope, Willow, Lewton, Attwood (Addition) & Pattengill (Addition)
7. What public safety team do we use?
 - Internal public safety onsite
8. Do we have laundry rooms onsite?
 - Yes, in some schools.

9. What is the square footage of the schools?
 - See RFP – Section 3
10. Do we need to maintain the boilers and provide routine maintenance?
 - Yes
11. What are the custodial duties within the school?
 - See RFP – Attachment F
12. Who handles the water fountain maintenance?
 - Proposer
13. What percentage of the buildings are carpeted?
 - Roughly 30%. We do not have an actual amount.
14. Who provides hand sanitizer?
 - District provides desk/office bottles, Proposer supplies refills for wall mounted and pedestal dispensers.
15. Who handles annual locker clean outs?
 - Proposer. See RFP Attachment F - Custodial Services List
16. Are we responsible for rolling the combinations?
 - No
17. What area of the schools are serviced by geothermal?
 - Eastern, New Willow build and potentially new Lewton build
18. What is the name of the geothermal system LPSD uses?
 - It is a closed loop vertical geothermal system
19. Where does our paper supply come from?
 - Proposer choice with District approval, to meet quality spec
20. Will we be sending out a list of people on the bid?
 - Yes, the pre-bid attendee list is included with this addendum.

21. Who maintains the pipes and the sinks? Up to what threshold?
- Proposer - \$3,000 threshold – See RFP – Attachment F Maintenance Section
22. Do we cover pipe bursts through a restoration company?
- Proposer. Up to \$3,000 – See RFP – Attachment F
23. Can maps of the schools be provided in the next addendum?
- Yes
24. Are there maintenance people on staff?
- Yes
25. Is maintenance on call 24 hours or for emergency situations?
- Yes
26. Are the gyms dual purpose rooms?
- Yes
27. How many gym floors are there that require contractor screening?
- None
28. Refinishing gym floors? Who is responsible? Do we have a separate breakout square footage?
- District will be invoiced directly, but Proposer coordinates the work
29. How many lunches are served at each school?
- Varies per location, per school year. Based on student enrollment.
30. Is there asbestos tile in the district? What is LPSD position if it gets chipped or cracked?
- Yes - Proposer maintains staff that are trained in asbestos abatement and handles square footage allowed under AHERA management. Up to \$3,000 threshold.
31. Who furnishes and maintains the hand towels and dryers in the restrooms?
- Proposer maintains. District supplies dispensers & electric dryers. Proposer provides supplies.
32. Are the rooms standard tile throughout the schools?

- No.

33. Who is responsible for painting the buildings?

- District.

34. Who is responsible for any peeling paint?

- District.

35. Please verify painting requirements: RFP calls for minor painting and touch-up, is there a minimum square footage of painting that needs to be completed annually?

- District will ask as needed - this is mostly handled by 3rd party contractor

36. Are there restrooms in the classrooms?

- Yes, some.

37. What are the buildings hours of operation?

- See list attached in Addendum 3

38. Is the base bid line 1 year or 3 year?

- See RFP – Section 2.4.3 – 3 years. Baseline bid should be annual price for each of 3 years

39. Who maintains the water filters?

- Proposer.

40. Does the district supply the filters to maintain the HVAC system?

- No. Proposer supplies.

41. Do the schools have elevators?

- Yes - Gardner, Eastern, Everett, Sexton, Admin, Dwight Rich, Fieldhouse, Hill

42. What buildings have clinics?

- Eastern, Everett, Sexton

43. What janitorial/maintenance work is done within Clinics?

- Standard, same as classrooms

44. Do we have a CMS system?

- District does not

45. Who handles boiler repairs?

- Proposer

46. Do we allow temp heating in locations that have heating issues?

- Yes, with district approval

47. Do we allow fridge and microwaves in the classrooms?

- No - only in teacher/staff lounge, unless specifically approved in relation to an instructional program.

48. Who cleans the wrestling room?

- Proposer

49. Can we get a copy of the sign in sheet?

- Yes – will be included in Addendum 3

50. Who is responsible for checking for lead?

- District.

51. Does the district manage the abatement?

- There is an expectation that Proposer will have some staff able to handle small abatement projects.

District will outsource all other abatement projects

52. Is there one maintenance company that does all of our schools?

- Yes, the proposer

53. Roof replacement information - What schools have had them done? When? By who?

- See Attached List of Roof Repairs

54. Are we responsible for minor roof repairs / patching?

- Yes

55. Please provide what units are on the rooftop.

- Condensers, Rooftop Units, Exhaust Fans, Solar panels in future on select sites etc., this is not an exhaustive list but represents the majority of buildings.

56. Who handles graffiti?

- Proposer

57. Are there day custodians?

- Yes

58. Are all the chemicals delivered to one location?

- Depending on the chemical; some are delivered to district warehouse, others directly to the school

59. Would we be opposed to a just in time delivery system?

- No, as long as it does not disrupt District operations or instruction

60. Do we have a current work order system?

- District uses current contractors' system

61. Who installs televisions and Clevertouch units?

- District

62. Are there bathrooms in the kindergarten section?

- Yes

63. Does each location have an area to store chemicals?

- Yes, custodial office

64. Have we had a recent facilities assessment done?

- No

65. Are we currently working on any capital projects that Sodexo is currently assisting in managing?

- No

66. Are we operating on a deficit?

- No

67. Who handles the water treatment?

- District

68. Are there elevators in all multilevel schools and are they big enough to get a ride on scrubber in?

- Yes -depends on the size and weight of the ride on scrubber

69. Who's responsible for purchasing the entryway mats?

- Proposer

70. Is the contractor responsible for purchasing maintenance tools?

- Yes, small hand tools. Larger tools or equipment can be requested as needed and discussed per District discretion.

71. Please share key layout plan/floor plan details for each facility

- See MAPS in Addendum 3

72. Please describe your guidelines for subcontractor and or a teaming partner for full response to this RFP.

- It is expected that proposer will handle all major functions as listed in the RFP without sub-contracting.

73. Please provide school wise facility open (typical school open-close timing, operational months)/close (including breaks, school holidays) timing for a full academic year cycle.

- See RFP Addendum 2 for school calendar; see list of school and building times included in Addendum 3

74. "Service shall be provided on all school days, throughout the summer and on breaks as needed, or as otherwise designated by the School District" - Kindly provide ongoing service schedule vis-à-vis school working schedule

- See RFP Addendum 2 for school calendar

75. "All of Proposer's employees are to present themselves in an appropriate manner and attire consistent with this RFP and the School District's requirements" - Please confirm if the prevalent staff uniform of Proposer shall be acceptable to meet the stated need

- Please see RFP Section 4.15

76. Please state service level expectations on daily/weekly/monthly/quarterly or similar basis for "LANSING SCHOOL DISTRICT PROPERTIES" with no staff and no student and as stated vacant land.
- Adheres to maintenance/mowing/snow removal/grounds schedules if not listed in Section III as NA
77. Please state service level expectations on daily/weekly/monthly/quarterly or similar basis for "RENTAL PROPERTY" with no staff and no student
- Adheres to maintenance/mowing/snow removal/grounds schedules if not listed in Section III as NA
78. Can you provide an address for the Glenburne Boulevard/Paramount Coffee location and scope of services desired?
- There is no physical address as the land is vacant, however there are two parcels of land (61 acres and 6 acres) located on Glenburne Blvd near Waverly Rd and Jolly Rd in Eaton County. The only services needed is mowing approximately 2 acres.
79. Besides swimming pools water sample, does the district operate its own licensed water system (wells, etc.) or sanitary/septic systems?
- Ebersole is the only property with well and septic, minor maintenance may be required – vast majority of repair is contracted by District
80. Based on the very quick turnaround, is extending the timeline an option? We feel strongly that there is high potential you are not going to get the right solutions proposed without extension.
- No extension is planned
81. The RFP states the proposer is responsible for notifying the District of sprinkler malfunction. Are repairs to be considered out of scope and to be proposed through quotes?
- In school sprinklers/fire suppression are handled by district. Grounds sprinklers/irrigation are handled by proposer.
82. The RFP mentions pull stations, smoke alarms and Fire Extinguishers, but who is responsible for the Fire Alarm system, and the Fire Sprinkler / Suppression systems?

- See RFP – Attachment F – Maintenance

83. Please confirm that all irrigation repairs are the responsibility of the district.

- In school sprinklers/fire suppression are handled by district; grounds sprinklers/irrigation are handled by proposer

84. Is the school district under any Energy Services contract?

- Yes

85. In 12 months, what's the one thing (most exciting, important, innovative, etc.) you want your partner to be known for?

- A high level of cleanliness, maintenance and safety for our students and staff

86. Does the school district have any underground storage tanks that the proposer would be responsible for maintenance and operation?

- All underground fuel tanks have been removed, there are some underground storm water retention systems, but those are District responsibility.

87. Is there a specific outline we should arrange our proposal structure? Or should we ensure all specific requirements are checked off and arrange as we see fit?

- See RFP Attachment C for proposal pricing form and section 2.2 for proposal information requirements.

88. Is the facilities provider responsible for High Glass Cleaning, including Exterior windows?

- Exterior high glass cleaning above 1st floor is districts responsibility through a separate contract as needed.

89. Who does the exterior window washing? When is this done? How is it done?

- Proposer - See RFP – Attachment F Custodial

90. Does the District have a Locksmith?

- No - this person is currently employed through existing provider.

91. Who's responsible for back-flow systems, and testing?

- District will be invoiced directly, but Proposer coordinates and schedules the work
92. Who handles Water Treatment for the boilers and chillers?
- Proposer
93. Who's responsible for "major" chiller PM's? (i.e.; cleaning the tubes, Eddy Current testing)
- Proposer
94. Who handles UPS systems? Batteries?
- Proposer responsible to reset, recharge, and maintain after an event that triggers power outage
95. Are there any motorized Basketball Backboards? Who maintains? And who handles the mechanical backboard systems.? (raising and lowering)
- Proposer
96. Auditoriums: Who is responsible for Stage Lighting, and equipment? Curtains? Control Room equipment?
- District
97. Will dumpster be required by contractor and where can it be stored? Also, who will handle emptying of the dumpster?
- District provides and maintains dumpsters at all facilities
98. Should all services be bid as 260 Service Days (2,080 Hrs.)?
- Yes, however work calendars do change based on holidays and leap year. 260 days should be used as a base; however, proposer should understand work calendar may modify slightly and this is not grounds for future contract negotiation
99. Please confirm that all positions are full year employees and not seasonal.
- Proposer should determine how many staff are needed - full or part time
100. Do you prefer this to be quoted as union or non-union, or both (two separate bids)?
- It is up to the Proposer to provide a responsible, qualified proposal to the RFP; not a primary decision factor but please advise if based on union/non-union status

101. Should the contractor include the custodial cost for Mount Hope School and Willow Elementary School within our base bid?
- Not the current buildings but yes for the future builds.
- 102.
- a. Are we correct to assume that we are to hold funds for repairs up to \$3,000 per incident and project above that threshold become the responsibility of the district and we secure quotes?
 - Yes.
 - b. If the repair exceeds \$3,000, will the provider still be responsible for the first \$3,000?
 - Yes.
 - c. Would the district be willing to accept a not to exceed annual spend amount for repairs under the \$3,000 threshold?
 - No.
103. Does the existing asset tags belong to the district or the current contractor?
- Current contractor.
104. Is the awarded contractor expected to re-tag the assets?
- Yes
105. Is the asset list broken out by school? Is there an asset tag for each piece of equipment? Why is drywall included on the asset list?
- Asset list should be by school, it is the District's request that there be an asset tag for each piece of equipment, drywall on the asset list is related to ceilings.
106. Who is responsible for providing trades hand tools, large shop, and power tools?
- Proposer

107. We understand it is the contractor's responsibility to provide the cleaning chemicals, cleaning equipment, and consumable supplies for the custodial operations. If available, please provide inventory list of existing equipment, and prior 12-month usage of consumable and supplies.
- See RFP Attachments G and H – most assets are on this list, however not all inclusive. Consumable and supplies list not available.
108. Can you please provide the percentage of floor types that are within the district (VCT, LVT, Terrazzo, Wood, Carpet, etc.)?
- Carpet approximately 30%, remainder is a mixture of floor types
109. Please further clarify this section P6 2.2.11
- Section refers to explanation of how selected Proposer will assist District in transition of services
110. What qualifies as minor asphalt repair? how many bags qualifies as minor? What is the size and depth of holes or specifications on asphalt/concrete to be repaired?
- Occurs infrequently, during spring – can vary from ½” or more on smaller holes. Should the hole be of significant size the District will outsource
111. How many exterior trash cans?
- On average: small elementary schools have 2 to 5. Middle Years 6 to 12. High Schools 12-20.
 - At least (1) trash and (1) recycling dumpster are available at each, school multiple at the larger schools
112. Can we get a better list of assets?
- See RFP Attachments G and H – most assets are on this list, however not all inclusive.
113. What lite maintenance are the custodians responsible for? Attachment F pg 38
- General maintenance items that do not require a licensed technician. Such examples include, but are not limited to: changing a light bulb but not a ballast, plunging a toilet but not repairing the pipes, adjusting thermostats without adjusting the control system, light in-facility furniture / equipment moves, etc.

114. For contract provided, will we have the opportunity to work with the District for potential contract redlines/changes? 2.2.17
- Yes, if specifically identified as outlined in 2.2.17
115. Can you clarify the detail required with our contract invoicing? 4.6.2
- 4.6.2 Refers to the negotiated contract amount; to be charged in monthly increments (contract value / 12).
Can be as simple as: Monthly Contract Charges for Month of (xxx) For Services Rendered.
 - 4.6.3 Refers to out-of-scope monthly invoicing that requires more detail and documentation.
116. Please identify who will supply all materials, supplies, and lite equipment for maintenance?
- Proposer
117. "If necessary to meet performance obligations and standards, cleaning may occur on weekends" - If cleaning on weekends to be conducted for whatsoever reasons on account of school district need or demand would school district reimburse Proposer to such services at an appropriate and fair commercial manner?
- See RFP Section 4.3.1.4, 4.3.1.4.1 & 4.3.1.4.2
118. "The Proposer acknowledges that these events are numerous and may occur after student hours" - Please share school-wise indicative activity schedule for a full academic year; even the last academic year's actual event schedule for each school will help us understand the need in a detailed manner and help us to estimate cost to include in proposal in the first response
- On average 4500 hours of non-standard custodial and/or maintenance hours per year. These hours typically include items like, but not limited to; sporting events, theatrical events, and facility rentals from outside organizations.
119. Does the District wish to have grounds personnel onsite during all athletic events?
- Proposer to recommend to best satisfy RFP, based on type of athletic event
120. Custodial staff at rental events? How does that work? Is it billable?
- See RFP Section 4.3.1.4, 4.3.1.4.1 & 4.3.1.4.2

121. How many projected hours of non-standard custodial and maintenance hours are there each year?
Can you provide a list of special events requiring set-up and staffing?
- On average 4500 hours of non-standard custodial and/or maintenance hours per year. These hours typically include items like, but not limited to; sporting events, theatrical events, and facility rentals from outside organizations.
122. Mulch amount needed per year as there is no outline on where or how much mulch is to be applied?
- Proposer responsible for touch-up in landscape areas as needed
123. Who is responsible for purchasing mulch?
- District purchases of majority of mulch, Proposer may have to purchase minimal amounts for touch-up as needed
124. Are the current grounds being subcontracted?
- No
125. Who handles the snow?
- Proposer. See RFP – Attachment F – Ground Maintenance Section
126. Snow removal on the outside ground (beyond the entrance and sideways) if needed. It is not part of Proposer's SOW; please clarify.
- See RFP – Attachment F – Grounds Maintenance.
127. Is snow removal required for synthetic sports fields? If so, does the district have equipment for this removal?
- No – not required for synthetic sports fields
128. Can you please provide a snow removal plan and maps?
- Proposer to determine based on requirements in RFP under grounds maintenance, page 48
129. Please confirm all vacant buildings require snow removal and grounds maintenance.
- Yes.

130. Are grounds and snow removal services required for buildings currently under construction?
- Yes
131. How far out from the building entrances are the custodians required to remove snow? Attachment F pg 44
- Decision is up to Proposer, in conjunction with their grounds crew – Custodian is responsible for entrance areas and immediate sidewalks. Proposer to come up with best solution to meet needs of the District
132. Who handles grounds?
- Proposer
133. Does the district have any backpack blowers, weed trimmers, and any other grounds equipment?
- Yes
134. I see that there are only two lawn mowers listed on the equipment list. Is the district going to provide more or are we to provide more zero turn lawn mowers to take care of the grounds throughout the district?
- District provides for contractor to use; there are more than 2 – these are considered heavy equipment that District provides
135. As the landscaping is not currently visible, are there any annual flower beds? Yes. If so, what is the approximate square footage?
- Minimal at multiple locations.
136. Is vegetation control in hardscapes (weeds in cracks, parking lots, etc.) desired?
- Yes
137. There is no mention of salt / ice melt products in the RFP for sidewalks or parking lots. Are these services desired as part of the base contract?
- Yes
138. If we have to physically remove lawn debris where can we dump it?

- The warehouse or recycling center
139. Are grounds services required where there is no mowable acreage provided?
- Yes - possible tree/brush or debris removal
140. Can you please confirm the mowable acreage for West Allegan Street?
- .09-acre, small strip next to Riddle Elementary.
141. Who provides the tools, equipment, and supplies for the ground's operations?
- District provides the equipment - Proposer to supply small tools and supplies
142. Who is responsible for purchasing annuals?
- District
143. Please provide your current fertilization plan for grounds.
- Proposer to provide
144. Are there any ponds or fountains that need maintenance?
- District only has retention ponds, no maintenance other than standard grounds as stated in RFP
145. What is the current mowing frequency?
- See RFP – Attachment F – Grounds Maintenance page 47
146. What are the required cut heights for common grounds?
- Proposer to determine in order to maintain overall site appearance according to RFP.
147. As is relates to Athletic Fields:
- a. Are REEL mowers required?
 - District determined and currently owns
 - b. On average, how many striping's are expected per field?
 - As needed
 - c. What are the required cut heights for athletic fields?
 - Proposer to determine by best practice

d. What are the athletic field locations and type of field?

- Don Johnson Field House: football, baseball, Junior High softball, High School softball, practice
- Eastern: practice soccer
- Everett: Football, baseball, softball, soccer, (2) practice fields
- Hill: Football / soccer field
- Sexton: Football, baseball, soccer, practice
- Gardner: (2) youth football, soccer
- Dwight Rich: Soccer

148. Who provides the salt and materials?

- Proposer

149. Does the school district provide the paint and paint sprayer for lining fields?

- No

150. Do any of the school districts trucks have plows on them or is that something that we would have to provide?

- Yes, provided by district

151. Do any of the school districts trucks have salters or is that something that we would have to provide?

- Yes - some have salters

152. On page 11 section 4.1.5, what is defined as light equipment and heavy equipment?

- Heavy equipment essentially refers to all equipment with a motor that can be driven; see Attachment G
– District Owned Vehicles and Equipment

153. Please clarify whether the district or the proposer will purchase vehicles. Page 11 4.1.5 states The District will maintain vendor accounts and make purchases of vehicles and heavy equipment that shall remain the property of the School District while page 15 4.5.1 states to the extent Proposer requires other

vehicles and equipment to perform under the Contract, the Proposer shall provide those vehicles and equipment at its sole cost and expense.

- District will purchase vehicles at district discretion based on needs. If proposer determines there is a need and district does not agree, proposer may purchase separately and will be responsible for maintaining equipment.

154. What existing equipment will we have access to? Can you provide an asset list by service line?

- See RFP Attachments G and H – most assets are on this list, however not all inclusive

155. Are plows onsite and available for any of the trucks listed on page 55?

- Yes

156. How many of the following vehicles are equipped to plow snow?

- 16

157. There are two Toro Groundsmasters listed on page 56. What model / width of cut are these machines?

- Model 7210 with a 72-inch deck.

158. Does the proposer need to supply more vehicles?

- If you feel it is necessary and are incurring the cost

159. Who provides and maintains vehicles, carts, and equipment?

- District provides. Proposer maintains.

160. In the equipment list we see 2 lawnmowers. Can we use these or are they for district use only?

- District provides for contractor to use; there are more than 2 – updated list in process

161. What is the dollar definition of heavy equipment? Would this include loaders and tractors and lawn mowers? P11 4.1.5

- There is no dollar definition, heavy equipment essentially refers to all equipment with a motor that can be driven

162. Can we choose to reject using certain equipment from the school and to what extent are we liable for repairs and maintenance? p15 4.5.1
- This is up for discussion, however if District were to allow Proposer to supply and maintain their own equipment; said equipment would need to meet the requirements of the RFP and be approved by the District. Proposer would remain responsible for maintenance and repair.
163. What vehicles are provided by the maintenance company?
- See RFP – Attachment G for district owned and provided equipment. Future equipment purchases to be discussed between proposer and district as to who purchases
164. Heavy equipment classifications - what does LPSD own?
- Heavy equipment essentially refers to all equipment with a motor that can be driven; see Attachment G – District Owned Vehicles and Equipment
165. In the list of services there is "Delivery Receiving", "Accept, store, and distribute all non-food deliveries", & "distribution of copy paper"- Is there a vehicle provided for this and what type of vehicle is it? Attachment F pg 40
- Yes – See Attachment G – District Owned Vehicles and Equipment
166. How many pool operators do you have currently vs. what you are looking for in a new contract?
- Proposer to determine based on requirements in RFP and best practices for District
167. Which schools have pools?
- Everett, Sexton, Dwight Rich, Gardner, Hill, Beekman
168. Who maintains the pools?
- Proposer. See RFP – Attachment F Maintenance Section
169. Are the pools heated? Who maintains the pool?
- Yes - Proposer

170. "Please clarify if school district will buy and supply/replenish consumables and toiletries like soap, toilet paper and similar OR if it's in the Proposer's scope. If the answer is Proposer's scope then kindly provide average yearly volume for each category for each facility under the scope of this RFP from the previous available records on purely indicative basis"
- Based on student and staff numbers provided, square footage of buildings, and acreage of property – it is Proposer's responsibility to determine adequate number of supplies necessary to meet the needs of the District
171. Are all staff a part of the union?
- No
172. Can we have a current staff count?
- See RFP – Section 3
173. Is there a 3rd shift custodian?
- Proposer determines based on evaluated needs of district.
174. Do we have dedicated maintenance person in school or an engineer?
- Proposer determines based on evaluated needs of district.
175. Do we look into staff that don't require outsourcing for permits?
- Unable to answer, unclear question
176. Do we have staffing broken out in the RFP?
- For district staffing numbers see Section 3 of RFP
177. What is the current custodial schedule?
- It is up to the Proposer to provide a responsible, qualified proposal to the RFP
178. Is the staff part of the state pension plan?
- No

179. With the understanding that this is a union contract, is the district wanting/requiring that it stays unionized?
- The District does not have a union contract with these employees, as they are employees of the current contractor. It is up to the Proposer to provide a responsible, qualified proposal to the RFP
180. Is it required to have a licensed boiler operator at each of the buildings in the district?
- No, however proposer should determine how many should be on staff districtwide.
181. Is it required to have licensed electricians and plumbers as part of the maintenance team?
- Yes, proposer should determine how many should be on staff districtwide.
182. Can you please provide a breakdown of how many HVAC technicians, boiler operators, electricians, plumbers, and maintenance employees are working in the district?
- It is up to Proposer to determine and provide appropriate staffing numbers based on needs outlined in RFP
183. Can you release a copy of the current custodial, maintenance and grounds contract to help challenge the status quo and develop a cost-effective solution?
- Since this was requested by a potential bidder we are releasing the 2020 contract for all potential bidders to view. The contract was also approved at a public Board of Education meeting and is currently available to view on our District web site in the October 1, 2020 Board agenda item X.A.: <https://meetings.boardbook.org/Public/Agenda/1579?meeting=404223>
 - Please note this new RFP for custodial, grounds and maintenance services has significant changes compared to the RFP that was issued for the current contract and the current contract should not be used as a basis or template for submitting a proposal.
184. Existing janitorial staff is available for rebadging? Would contracting authority assist in this matter post contract forward?
- Reference RFP Section 2.2.11
185. Please share current day, general (if applicable) and evening shift timing for each facility under this RFP

- It is up to the Proposer to provide a responsible, qualified proposal to the RFP

186. It was made apparent at the walkthrough that Sodexo employees are part of the AFSCME 1390 union. Please provide current CBA to ensure we factor in correct benefits and wages, benefit cost to the district and employees and PTO for employees (sick days/vacation days/leave days). Please provide a seniority list with pay wages and job titles that align with the CBA for all employees.

- The CBA is between current contractor and bargaining group; the District is not allowed to disclose that information

187. Outside of base spend of contract, how much have you spent on work orders over the past year both for outside contractors and in district repairs?

- Based on student and staff numbers provided, square footage of buildings, and acreage of property – it is Proposer’s responsibility to determine adequate response to RFP to meet the needs of the District. Prior year spend not relevant as scope of RFP has changed.

188. What does your current vendor’s on-site management structure look like by discipline (custodial, maintenance and grounds)/can you provide an organizational chart that ties to the existing outsourced operation?

- Based on student and staff numbers provided, square footage of buildings, and acreage of property – it is Proposer’s responsibility to determine adequate staffing to meet the needs of the District. Prior year staffing not relevant as scope of RFP has changed.

189. Does the scope of work listed in this RFP match the existing scope of work in the current contract (Custodial, Maintenance, and Grounds)?

- No

190. Please provide custodial union and is there any other unions involved in the current project?

- AFSCME - No
191. Can we get a copy of the CBA for the union?
- No
192. Can we get a copy of the seniority list?
- No
193. Are we looking to have a schedule provided or looking to change?
- Proposer to provide based upon need of district
194. ""MATERIALS MANAGEMENT / WAREHOUSE"" - Please provide a list A, B and C category items which requires material management applied services through Proposer
- Question unclear, Materials Management / Warehouse requirements include managing the warehouse and all associated functions; see RFP Attachment F – Materials Management / Warehouse
195. Please confirm the details of the materials management software available through School District to implement material management program".
- District does not maintain the software currently - Proposer to provide
196. Please confirm number of trucks to be loaded and unloaded typically per each month and number of forklifts and or material handling equipment available to assist.
- Pony/courier service occurs daily, on average one truck load/unload per week outside of pony service. However please refer to RFP Attachment F – Materials Management / Warehouse for peak time explanation
197. Verify if district will be willing to provide office and storage for management of the operation. Or, if existing vacant space in district, cost for leasing.
- Warehouse and office space provided, See RFP – Materials management/warehouse – Attachment F
198. What are the names of existing Building Automation Systems (BAS) currently in operation?
- Control solutions, SC Tech and Wattstopper

199. Is the BAS the same in all buildings?
- No.
200. Who handles the BAS system? Does the District have a HVAC Controls contractor?
- District and Proposer in cooperation with each other
201. Are our controls Siemens? Is SC overlaid?
- Siemens controls with SC overlaid
 - Control Solutions
 - Trane
 - Some equipment remains on pneumatic system
202. Is there a list of Generators located at each school? Do they handle more than just Life Safety equipment?
- Locations that have generators include: Sexton, Hill, Everett, Eastern, Pattengill, Dwight Rich, North, Don Johnson Field House; as well as new builds at Mt Hope, Willow, and Lewton. All generators only handle life safety equipment.
203. 3rd Party Contracts
- District holds and maintains 3rd Party Contracts for: stormwater management, controls systems, trash services, backflow prevention, fire extinguisher testing, fire alarm testing and safety systems. Proposer is responsible for maintaining all other 3rd party contracts to meet the needs of the RFP.
204. "Insects, including fire ants, and disease control management on shrubs, trees, or sod. Certified chemical applicators as needed, in accordance with Proposer Integrated Pest Management (IPM) plan" - Since the School District has already appointed Rose Pest Control (Page 11), can we say the expected role of Proposer is to only coordinate with such third-party contractors to implement IPM planned schedule of activities? Please clarify.

- It is the Proposer's responsibility to maintain a contract with an IPM company to fulfill responsibilities as it pertains to State of MI laws and regulations.

| SCHOOLS | | Start Time | End Time | Grades | Student/Staff Count |
|--|-----------------------------|------------|----------|--------------------|---------------------|
| Attwood New Tech. | 915 Attwood Drive | 7:40 am | 2:35 pm | K-8 | 462 / 39 |
| Averill New Tech. | 3201 Averill Drive | 8:55 am | 3:50 pm | PreK-4 | 322 / 31 |
| Beekman Center | 2901 Wabash Road | | | | 166 / 67 |
| Cavanaugh STEAM | 300 West Cavanaugh Road | 8:55 am | 3:50 pm | PreK-3 | 309 / 31 |
| Cumberland Elementary | 2801 Cumberland Road | 8:55 am | 3:50 pm | PreK-4 | 323 / 38 |
| Dwight Rich School of the Arts | 2600 Hampden Drive | 8:55 am | 3:50 pm | PreK-8 | 638 / 77 |
| Eastern High School | 626 Marshall Street | 8:00 am | 2:48 pm | 8-12 | 893 / 102 |
| Everett High School | 3900 Stabler Street | 8:00 am | 2:48 pm | 8-12 | 1107 / 134 |
| Forest View Elementary | 3119 Stoneleigh Drive | 8:55 am | 3:50 pm | PreK-4 | 326 / 35 |
| Gardner International | 333 Dahlia Drive | 7:40 am | 2:35 pm | K-8 | 939 / 88 |
| Gier Park Elementary | 401 East Gier Street | 8:55 am | 3:50 pm | PreK-4 | 361 / 29 |
| Hill Center - Lansing Tech High School, CTE Program, Leases, Admin | 5815 Wise Road | | | | 73 / 48 |
| J.W. Sexton High School | 102 McPherson Avenue | 8:00 am | 2:48 pm | 8-12 | 728 / 97 |
| Kendon Elementary / Preschool | 827 Kendon Drive | 8:55 am | 3:50 pm | Preschool | 91 / 19 |
| Lewton Spanish Immersion - closing Fall 2026, reopening Fall 2027 | 2000 Lewton Place | 8:55 am | 3:50 pm | PreK-8 | 324 / 34 |
| Lyons Elementary | 2901 Lyons Avenue | 8:55 am | 3:50 pm | PreK-4 | 292 / 26 |
| Mt. Hope School – reopening Fall 2025 | 1215 East Mount Hope Avenue | NA | NA | NA | 0 / 0 |
| North Elementary | 333 East Miller Road | 7:40 am | 2:35 pm | K-8 | 363 / 45 |
| Pattengill Magnet School | 815 N. Fairview Avenue | 7:40 am | 2:35 pm | PreK-8 | 657 / 61 |
| Pleasant View | 4501 Pleasant Grove Road | 7:40 am | 3:50 pm | Preschool & Alt Ed | 90 / 26 |
| Post Oak International | 2320 Post Oak Lane | 8:55 am | 3:50 pm | PreK-8 | 470 / 43 |
| Willow @ Riddle; closing as a school when new Willow opens 2026 | 221 Huron Street | 8:55 am | 3:50 pm | PreK-3 | 304 / 31 |
| Sheridan Road STEAM | 16900 North Cedar Street | 7:40 am | 2:35 pm | 5-8 | 366 / 36 |
| Wexford Montessori | 5217 Wexford Road | 7:40 am | 2:35 pm | PreK-8 | 364 / 44 |
| Willow - closed for demolition / rebuild - reopening Fall 2026 | 1012 West Willow Street | NA | NA | NA | 0 / 0 |
| Mt Hope @ Woodcreek Montessori | 4000 Woodcreek Lane | 7:40 am | 2:35 pm | 4-7 | 218 / 30 |

- Last year of 8th grade at High Schools is 2023-24 school year; 2024-25 forward will be 9-12
- Summer hours vary slightly
- Ebersole Center – Conference and Field Trips, per rental scheduling

ADMINISTRATIVE / NON-SCHOOL EDUCATIONAL

| | | Start Time | End Time | Grades | Student/Staff Count |
|---|---------------------------|--------------------------|----------|--------|------------------------|
| Administration Building | 519 West Kalamazoo Street | 7:00 am | 5:00 pm | NA | 0 / 105 |
| Ebersole Environmental Education & Conference Center | 3400 Second Street | Per Rental Scheduling | | NA | 0 / 5 |
| Eva Evans Welcome Center/Elmhurst | 2400 Pattengill Avenue | 7:00 am | 5:00 pm | NA | 0 / 34 |
| Mt Hope Church | 301 W Jolly Road | Under Construction | | NA | NA |
| Halik Center - Wainwright | 4200 Wainwright Avenue | 7:00 am | 5:00 pm | NA | 0 / 38 |

ATHLETIC FACILITIES

| | | | | | |
|----------------------------------|---------------------------|--------------------------|---------|----|-------|
| Don Johnson Field House / Fields | 400 North Pennsylvania | 2:30 pm | 8:00 pm | | NA |
| RENTAL PROPERTY | | | | | |
| Capital Area District Library | 123 West Kalamazoo Street | NA | NA | NA | NA |
| Reo Elementary | 1221 Reo Road | NA | NA | NA | NA |
| Harley Franks | 2924 Newark | 8:00 am | 4:00 pm | | |
| Vehicle Maintenance Center | 1617 Sam's Way | NA | NA | NA | NA |
| Wohlert Farms | East State Road | NA | NA | NA | NA |
| | | | | | |
| WAREHOUSE | | | | | |
| Physical Plant/Service Center | 1717 Sam's Way | Proposer Headquarters | | | 0 / 0 |

BOILER LIST

| School | Type | Manufacturer | Capacity | # of Units | Boiler Installed |
|---------------|-----------------|--------------|---------------|------------|------------------|
| Attwood | Hot Water | LES | 750,000 BTU | 3 | 2002 |
| Averill | Hot Water | LES | 589,000 BTU | 3 | 2002 |
| Cavanaugh | Hot Water | LES | 1800 BTU | 2 | 2022 |
| Cumberland | Steam | Johnston | 100 Hp | 1 | 1987 |
| Elmhurst | Hot Water | Hydro-Therm | 237,000 BTU | 12 | 1988 |
| Pattengill | Hot Water | Lochinvar | 1,999,999 BTU | 2 | 2018 |
| Forest View | Steam | LES | 1,610,000 BTU | 1 | 2014 |
| Forest View | Hot Water | Lochinvar | 1,999,999 BTU | 1 | 2014 |
| Harley Franks | Hot Water | Lochinvar | 1,999,999 BTU | 1 | 2014 |
| Gier Park | Steam | LES | 50 Hp | 1 | 2003 |
| Kendon | Hot Water | Hydro-Therm | 237,000 BTU | 10 | 1988 |
| Lyons | Steam | LES | 3,340,000 BTU | 1 | 2007 |
| Lewton | Steam | LES | 2,410,000 BTU | 1 | 2014 |
| Mt. Hope | No Boilers | | | | |
| North | Hot Water | Lochinvar | 1,999,999 BTU | 2 | 2014 |
| Pleasant View | Hot Water | Ray | 3200 Hp | 1 | 1968 |
| Post Oak | Hot Water | Kewanee | 1,750,000 BTU | 1 | 1965 |
| Post Oak | Hot Water | Lochinvar | 1,125,000 BTU | 1 | 2017 |
| Reo | Hot Water | LES | 1,500,000 BTU | 2 | 2000 |
| Riddle | Hot Water | LES | 1,000,000 BTU | 2 | 2014 |
| Riddle Annex | Closed Building | | | | |
| Sheridan Road | Hot Water | LES | 2,000,000 BTU | 1 | 2014 |
| Sheridan Road | Removed | | | | |
| Wainwright | Hot Water | Les | 1173 Hp | 1 | 2014 |
| Wexford | Hot Water | Ray | 2,900,000 BTU | 1 | 1968 |
| Wexford | Hot Water | LES | 1,125,000 BTU | 1 | 1968 |
| Willow | Closed Building | | | | |
| Woodcreek | Hot Water | LES | 80 Hp | 1 | 2014 |

MIDDLE/HIGH SCHOOLS

| School | Type | Manufacturer | Capacity | # of Units | Year Built |
|---------------------|-------------------|-------------------|---------------|------------|------------|
| Eastern | GEO System | Tran | | | 2006 |
| Everett | Hot Water | Cleaver Brooks | 250 Hp | 1 | 2020 |
| Everett | Hot Water | Cleaver Brooks | 250 Hp | 1 | 2020 |
| Everett | Hot Water | Cleaver Brooks | 250 Hp | 1 | 2020 |
| Everett | Hot Water | Laars | 1,200,000 BTU | 1 | 2020 |
| Hill | Hot Water | Lochinvar | 4,999,999 BTU | 4 | 2014 |
| Hill | Hot Water | Patterson - Kelly | 1,500,000 BTU | 1 | 2006 |
| Hill | Hot Water | Patterson - Kelly | 2,000,000 BTU | 1 | 2006 |
| Hill Pool Heater | Hot Water | Weil Mclain | 750,000 BTU | 1 | 1981 |
| Sexton | Steam | Cleaver Brooks | 250 Hp | 3 | 2022 |
| Otto | Sold the Building | | | | |
| Dwight Rich | Hot Water | Patterson - Kelly | 1,500,000 BTU | 3 | 2019 |
| Admin | Steam | City Steam | | | |
| Ed Center | Building Closed | City Steam | | | |
| Beekman | Hot Water | PVI | 2,000,000 BTU | 1 | 2012 |
| Beekman | Hot Water | Lochinvar | 1,999,999 BTU | 1 | 2015 |
| Beekman | Hot Water | Laars | 520,000 BTU | 1 | 2023 |
| Field House | Steam | Johnston | 250 Hp | 2 | 1985 |
| Gardner | Hot Water | Cleaver Brooks | 150 Hp | 1 | 1968 |
| Gardner | Hot Water | Cleaver Brooks | 150 Hp | 1 | 2012 |
| Gardner Pool Heater | Hot Water | Laars | 1,430,000 BTU | 1 | 2012 |
| Physical Plant | Hot Water | Tran | 3,348,000 BTU | 1 | 1970 |
| VMC | Hot Water | Ray | 1173 Hp | 1 | 1970 |

ROOF REPAIR

| School | Build Date | Year Replaced | Square Foot | Roof System |
|---------------|------------|---------------|-------------|--------------|
| Attwood | 1965 | 2001 | 39,860 | Modified |
| Averill | 1964 | 2004 | 39,010 | Modified |
| Cavanaugh | 1957 | 2021 | 31,810 | Hypalon |
| Cumberland | 1958 | 1998 | 34,440 | Mod, Hypolon |
| Elmhurst | 1950 | 2003 | 53,910 | Modified |
| Pattengil | 1955 | 2016 & 2021 | 33,970 | Modified |
| Forest View | 1956 | 1998 & 2005 | 35,044 | Modified |
| Harley Franks | 1960 | 2002 | 29,600 | Mod, Hypolon |
| Gier Park | 1952 | 2002 | 43,350 | EPDM |
| Kendon | 1958 | 2004 | 35,250 | Modified |
| Lyons | 1951 | 2022 | 26,645 | Modified |
| Lewton | 1957 | 1998 & 2004 | 41,870 | Modified |
| Mt. Hope | 1948 | New Build | 25,135 | Hypalon |
| North | 1975 | 2022 | 65,740 | Modified |
| Pleasant View | 1954 | 1998 & 2005 | 39,960 | Mod, Hypolon |
| Post Oak | 1965 | 2005 | 39,720 | EPDM |
| Reo | 1963 | 1998 | 32,585 | Hypalon |
| Riddle | 1975 | 2004 | 24,710 | Modified |
| Sheridan Road | 1954 | 1990 & 2009 | 41,125 | Mod, Hypolon |
| Wainwright | 1960 | 2006 | 43,860 | Modified |
| Wexford | 1971 | 2022 | 41,020 | Mod, Hypolon |
| Willow | 1950 | New Build | 38,630 | Modified |
| Woodcreek | 1968 | 2003 | 45,285 | Modified |

882,529

MIDDLE/HIGH SCHOOLS

| School | Build Date | Year Replaced | Square Foot | Roof System |
|----------------|------------|----------------------|-------------|--------------------|
| Eastern | 2007 | 2007 & 2018 | 103,290 | EPDM, Mod, Slate |
| Everett | 1958 | 2003 | 200,765 | Mod, BUR |
| Hill | 1968 | 1969 & 2014 | 186,060 | Mod, HYP, BUR |
| Sexton | 1942 | 2021 | 103,370 | EPDM, BUR, MOD, HY |
| Otto | 1937 | odd said we don't ne | 341,120 | Mod, Bur |
| Dwight Rich | 1962 | 2020 | 155,020 | Hypalon, EPDM |
| Admin | 1923 | 2014 | 16,080 | Modified |
| Beekman | 1966 | 2016 & 2021 | 91,020 | Mod, Hypolon |
| Field House | 1925 | 2004 & 2021 | 54,104 | Shingle |
| Gardner | 1968 | 2003 & 2013 | 146,320 | EPDM |
| Physical Plant | 1975 | 1975 | 80,920 | Metal |
| VMC | 1971 | 1971 & 2017 | 9,345 | Modified |

1,487,414

Lansing School District Request for RFP - Custodial, Grounds, Maintenance, Repair Services
Intent to Respond and Walk Through List

| <u>Company</u> | <u>Contact</u> | <u>Attended Walk-Thru</u> |
|---|--|--------------------------------------|
| ABM | Adrianne Smith | Y |
| Auxilio Services | Jim Tyndall | Y |
| DetailXPerts | Joe Gonzalez / Angela Williams | Y |
| DM Burr Group, The | Isaac Burr | Y |
| Executive Building Maintenance (EBM, Inc) | Emily Reudig | N |
| Forefront Campus Services | Rob Bride / Gary Rizzato / David Corker | Y |
| GDI Integrated Facility Services | Rich Ellstrom | Y |
| GSF-USA | Scott Mackall | Y |
| HCSG Campus Services Group | Jonathon Pannell | N |
| HES Facilities Management | Craig Wall | Y |
| JLL (Jones Lang LaSalle) | John Hedlund | Y |
| LGC Global Energy FM | Fred Feliciano | Y |
| Professional Group, The | Kevin Watza / Brian Morley / Ron Mills / Brian Holte | Y |
| Sodexo | Jeff Pente | Y |
| SSC Services for Education | Mike Aird / Kenneth Gray / Kerry Bryant | Y |
| United Commercial Services | Todd Francis | N |
| 3-D Mechanical | Damon Kirkland | Y |
| Duckett Brothers | Dennis McCants | Y |
| RNA Facilities Management | Cody Hastings | Y |

Bid# SD-1795 For Custodial, Grounds, Maintenance
 Date/Time 1/17/24 8am Pre Bid + Walk Thru

| Name | Company | Address | City/State/Zip | Phone # | Email Address |
|----------------|-------------------|-----------------------|---------------------|-------------------|----------------------------|
| Tim Tynghall | Auxilio | 112600 Cornell Drive | Cincinnati, OH | 517 304 8212 | tyngall@auxilio.com |
| Isaac Burr | The DM Burr Group | 4252 Holiday Dr | Flint, MI | 810-444-6765 | isaacburr@dmgroup.com |
| Dennis McLean | Docket | 118 Shaws Sp | Lansing, MI | (517) 417-6500 | Dmyle@doctgroup.com |
| Mike Bird | SSC | 1225 E. Lewis St | Kokomo, IN | 210-610-9507 | mike.bird@sscc.com |
| Kenneth Gray | SSC | 430 South Eddy Street | South Bend, IN | 706-571-9667 | kenneth.gray@sscc.com |
| Kerry Bryant | SSC | 1500 Lamers Dr | Little Chute, IL | 920.952.9610 | kerry.bryant@sscc.com |
| TS Brasley | ABM | 1175 Crowl St | Troy, MI 48064 | 734 309 9551 | Thomas.Brasley@abm.com |
| Randy Simpson | ABM | 11400 Corporate Way | Hartford, CT 06124 | 214 789 3484 | randy.simpson@abm.com |
| Damon Philburt | 3-D Mechanical | 4365 Broadway | Hartford, CT 06124 | 860 929-2778-9194 | DPhilburt@3dmech.com |
| Mario Bolden | Forefront | 2662 Maple Ave | St. Louis, MO 63103 | 314 615-7888 | mario.bolden@forefront.com |
| Rohr Biele | U | U | M | U | 2013. Biele @ |
| Kevin Matza | PGS | 15201 E 11 mile | Roswell, GA | 517-599-8686 | KevinMatza@pgs.com |
| Carie Wau | HES | 1204 Ashover | Bloomfield | 248 753 3657 | carie@hes.com |
| Tico Docket | D2 | 618 Shaws Dr | Lansing | 517 749 5508 | tdocket@doctgroup.com |

1/17/24

Bid# 50-1795

For Custodial/grounds/Maintenance Repair

Date/Time 1/17/24 8am Pre Bid + Walk Thru

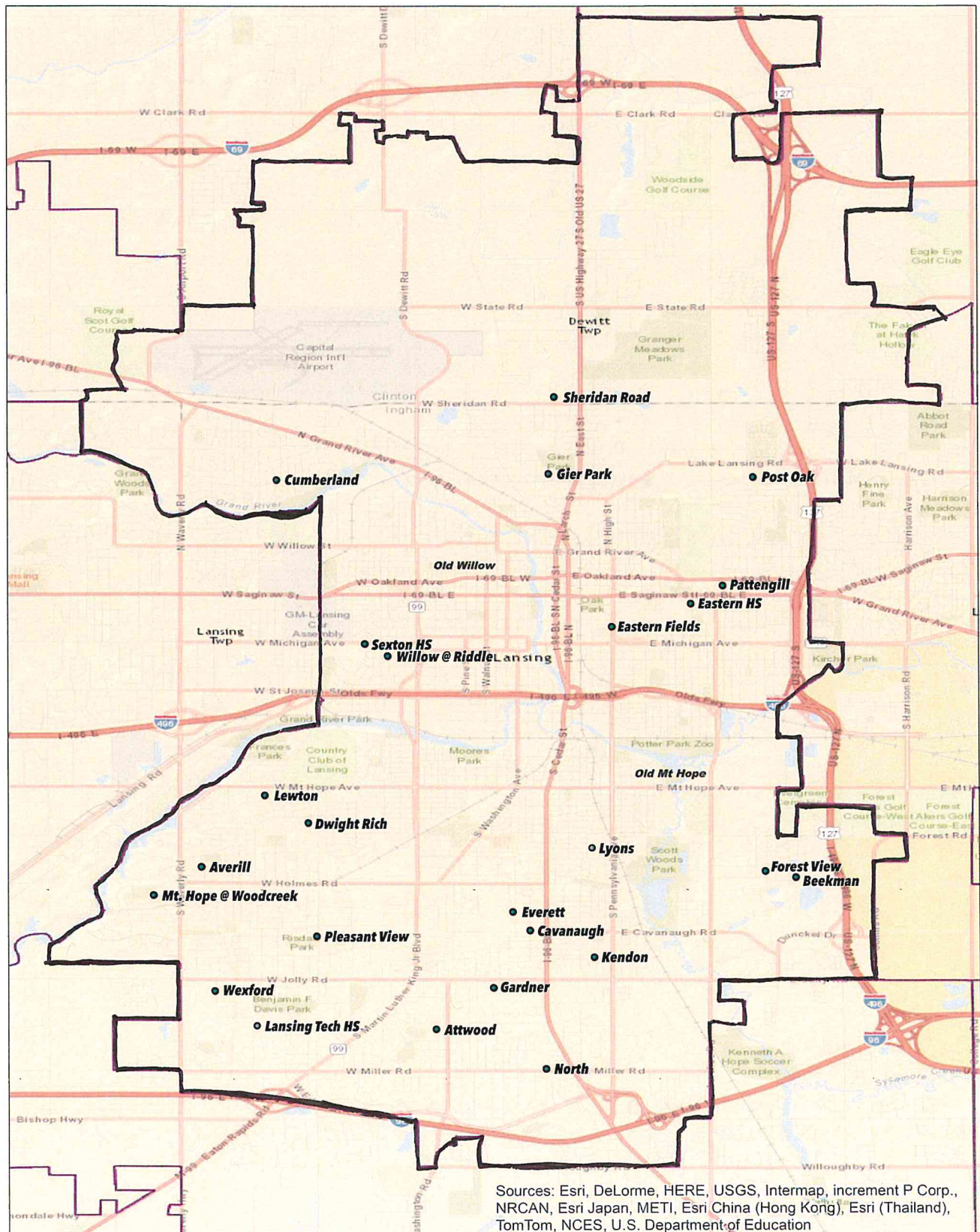
| Name | Company | Address | City/State/zip | Phone # | Email Address |
|--------------------|------------------------|--|--|-------------------------|---|
| Farrell | GDI | 24300 Southland Rd | 48375 SOUTHFIELD MI | 248-467-1360 | TEA FARRELL @GDI.COM |
| Dean Foster | Solace | 1717 Sams Way | Lansing | 616-661-1491 | hazel.bush@solace.com |
| Brian Holt | PCS | 575 N. Cedar | Lansing | 517-344-0945 | Brian.Holt@PCS-USA.COM |
| Ron Mills | RBW Professional Group | 1530 E. 11 Mile Rd Roseville MI 48066 | Roseville MI 48066 | 586-533-9350 | rdmills@rbw-usa.com |
| Brian Morley | PSM | 15801 E. Woodward Road | | 586-553-3432 | Brian.Morley@PSM-USA.COM |
| Mark Halsey | Solexo | 1717 Sams Way | Lansing MI | 317-619-7244 | mark.halsey@solexo.com |
| Body Hastings | RNA | 3701 E. 94th Ave Or | Ypsilanti MI 48197 | 734-934-7047 | Chastings@rna.com |
| Courteney Parker | JCL | 200 E. Riverdell | Ann Arbor MI | 313-320-0213 | COURTNEY.PARKER@JCL.COM |
| Scott Madden | CSF | 2200 Decker Ave | Ann Arbor MI | 734-517-7747 | SMadden@CSF-USA.COM |
| GHANASHAM MANAIKAR | LGC GLOBAL | 7310 Woodward, Detroit | Detroit MI | 269-222-1156 | ghanasham.manaikar@lgcorp.com |
| TEJ D Sharma | Dentilports | 625 E. Grand Blvd | Detroit MI | 313-984-3196 | lgcorp.com |
| CARL THELEN | LSD | 519 W Kalamazoo | Lansing MI | | |
| Lai Brannen | LSD | " | " | | |
| Kristina Tokar | LSD | " | " | | |

Bid# 60-1795

For Custodial Records Mtc Report

Date/Time 4/17/24 Team Pre Bid & Walk Thru

[illegible]



Administration Building
519 W. Kalamazoo Lansing, MI 48933



In case of emergency call 911.

Exit

Tornado Shelter

Fire Escape Route

Fire Extinguisher

 Automated External Defibrillator (AED)



We are dedicated to the safety of our students and staff.

Administration Building
519 W. Kalamazoo Lansing, MI 48933



You Are Here

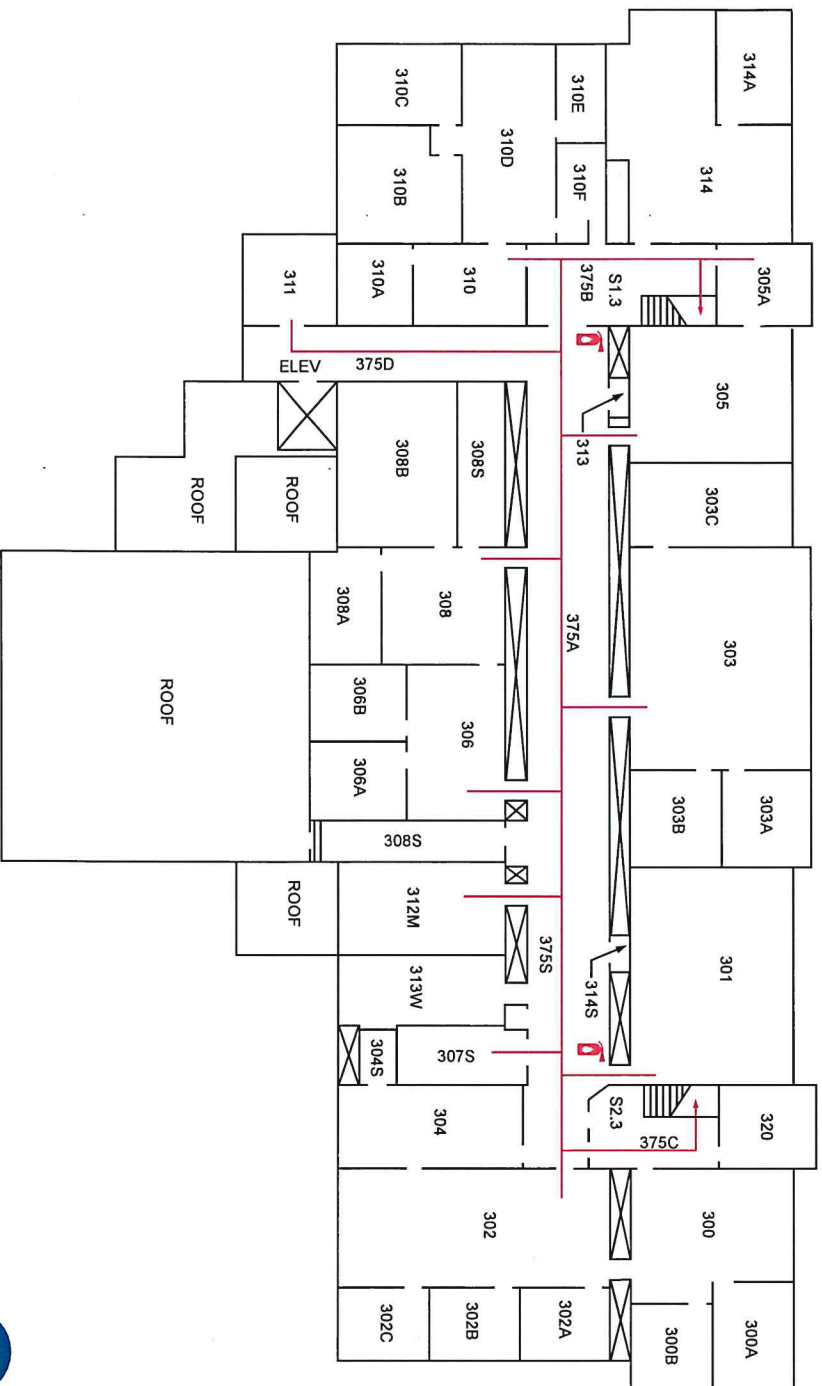
Tornado Shelter

Fire Extinguisher

We are dedicated to the safety of our students and staff.

FIRE AND TORNADO SAFETY MAP

Administration Building
519 W. Kalamazoo Lansing, MI 48933



In case of emergency call 911.

LEGEND

You Are Here

Exit

Tornado Shelter

Fire Escape Route

Fire Extinguisher

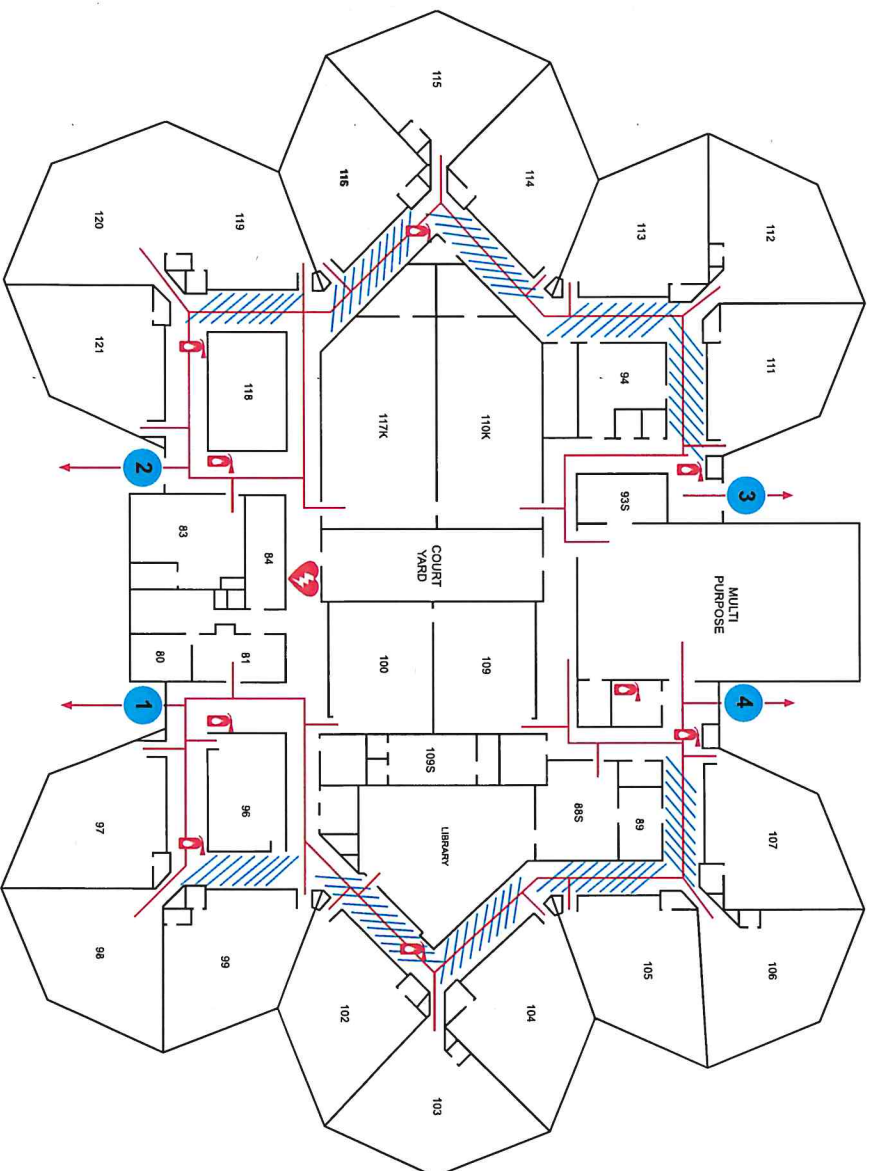
Automated External
Defibrillator (AED)



We are dedicated to the safety of our students and staff.

FIRE AND TORNADO SAFETY MAP

Attwood New Tech School
915 Attwood Drive, Lansing, MI



In case of emergency call 911.

LEGEND

You Are Here



Exit



Tornado Shelter



Fire Escape Route



Fire Extinguisher



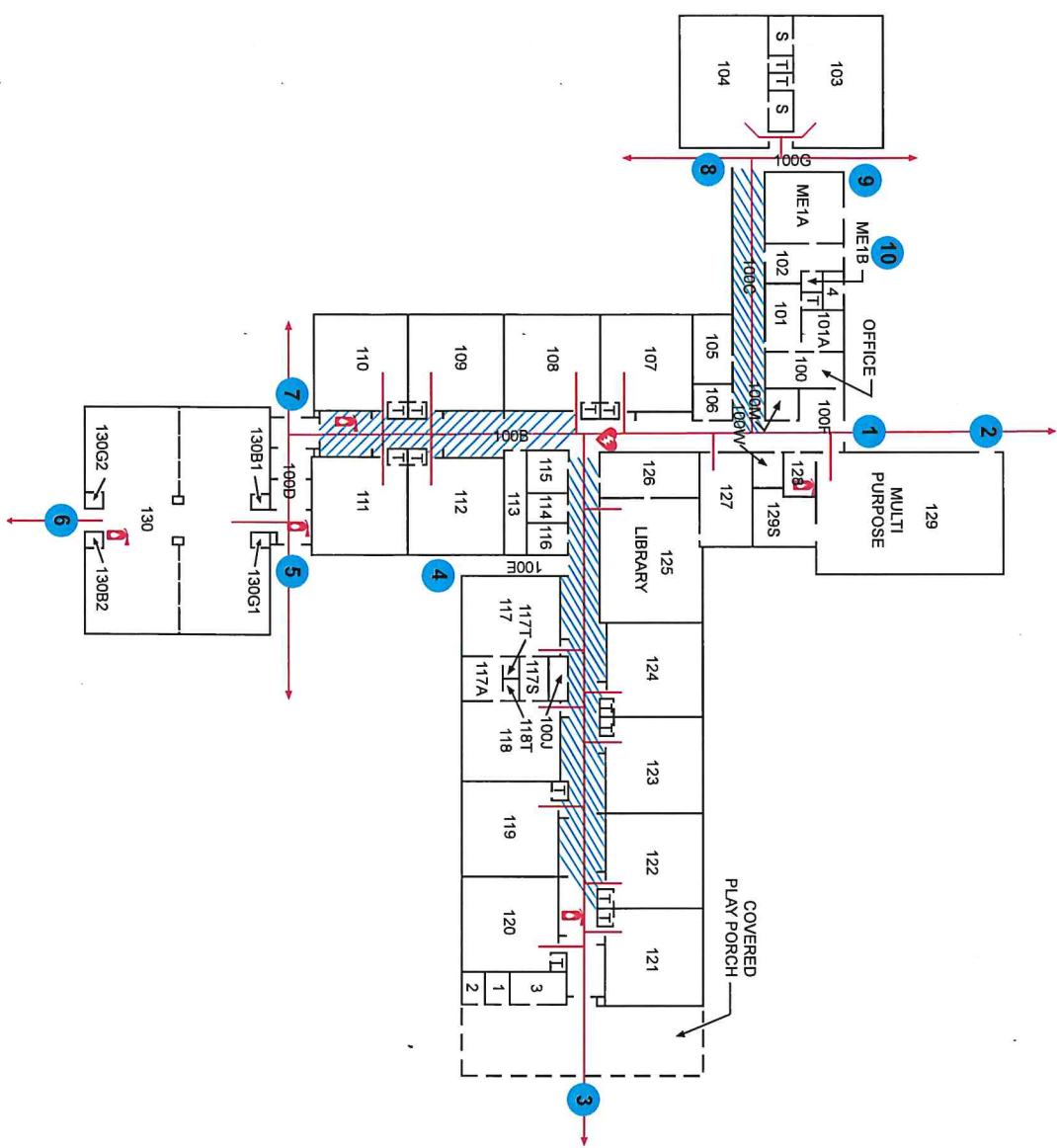
Automated External
Defibrillator (AED)



We are dedicated to the safety of our students and staff.

FIRE AND TORNADO SAFETY MAP

Averill Elementary School
3201 Averill dr., Lansing, MI



In case of emergency call 911.

LEGEND

You Are Here

Exit

Tornado Shelter

Fire Escape Route

Fire Extinguisher

Automated External
Defibrillator (AED)



We are dedicated to the safety of our students and staff.

The Beekman center
2901 Wabash Rd., Lansing, MI

The Beekman center
2901 Wabash Rd., Lansing, MI

You Are Here

LEGEND

Exit

Tornado Shelter

→ Fire Escape Route

Fire Extinguisher

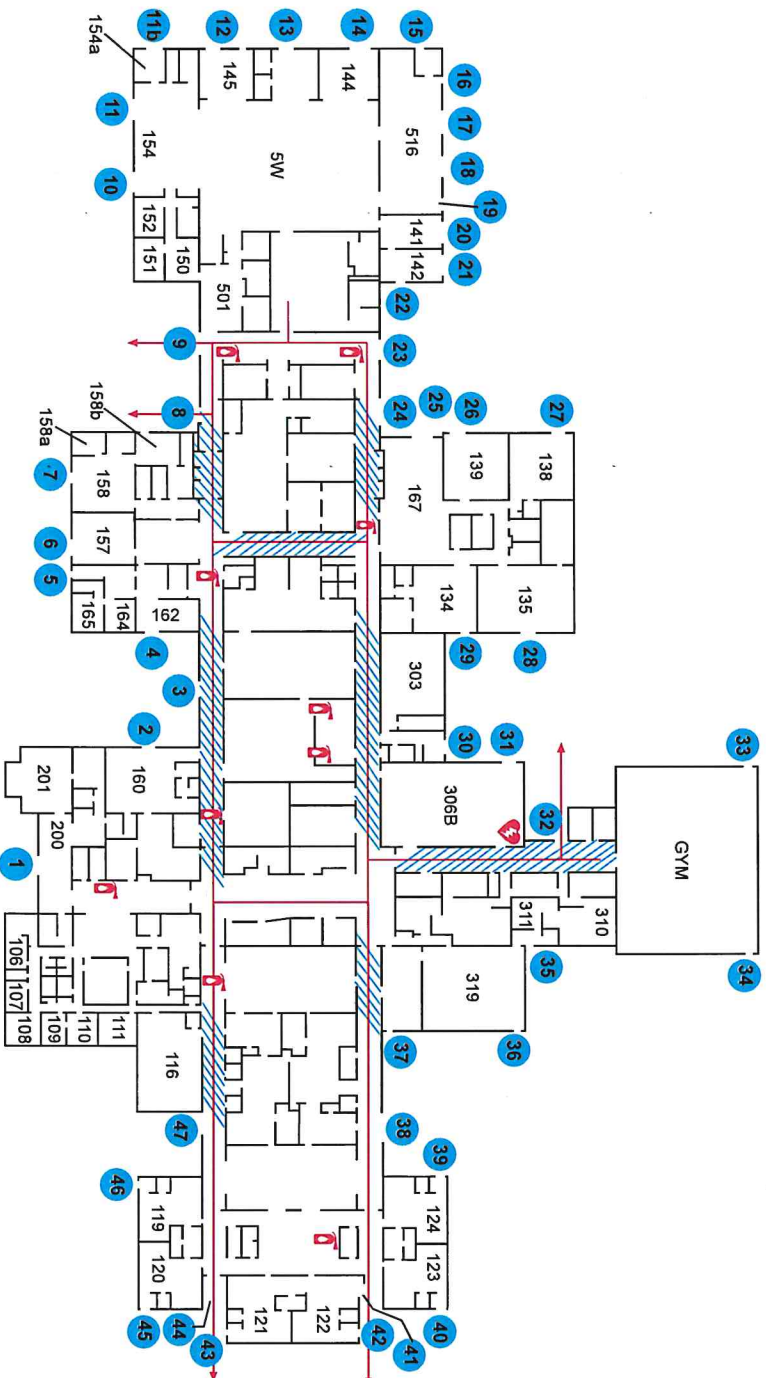
 Automated External
Defibrillator (AED)



We are dedicated to the safety of our students and staff.

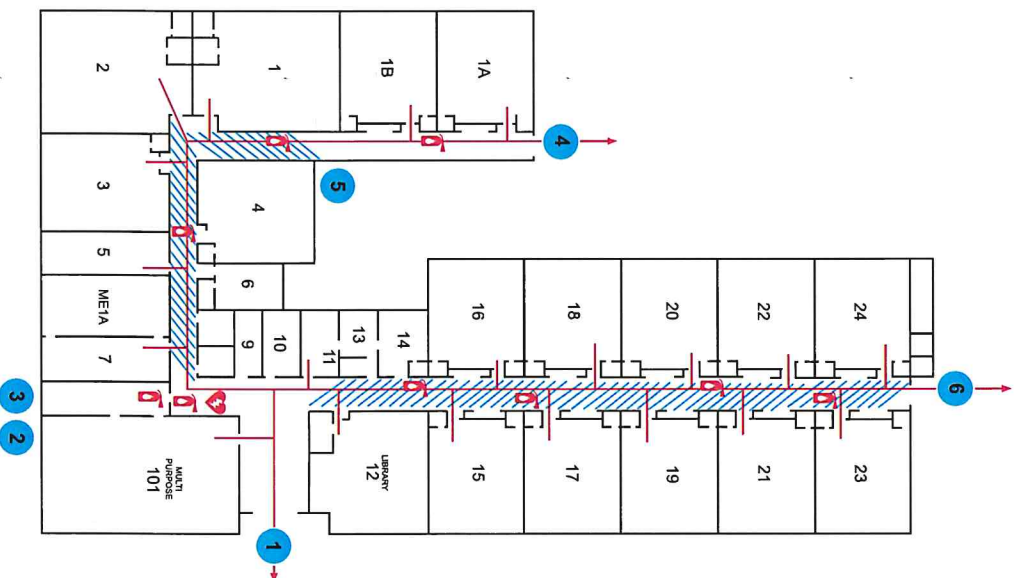


NORTH



FIRE AND TORNADO SAFETY MAP

Cavanaugh Elementary School
300 W. Cavanaugh Rd., Lansing, MI



In case of emergency call 911.

LEGEND

You Are Here

● Exit

▨ Tornado Shelter

→ Fire Escape Route

🧯 Fire Extinguisher

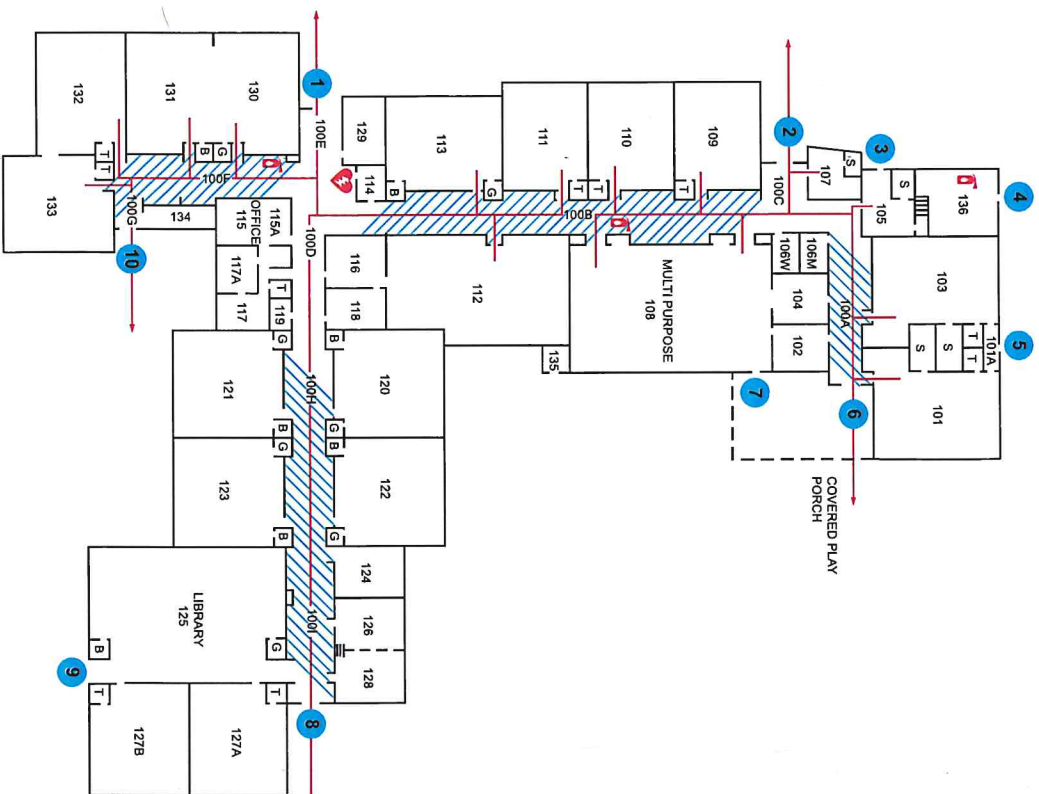
💡 Automated External Defibrillator (AED)



We are dedicated to the safety of our students and staff.

FIRE AND TORNADO SAFETY MAP

Cumberland Elementary School
2801 Cumberland rd., Lansing, MI



In case of emergency call 911.

LEGEND

You Are Here

● Exit

▨ Tornado Shelter

→ Fire Escape Route

🧯 Fire Extinguisher

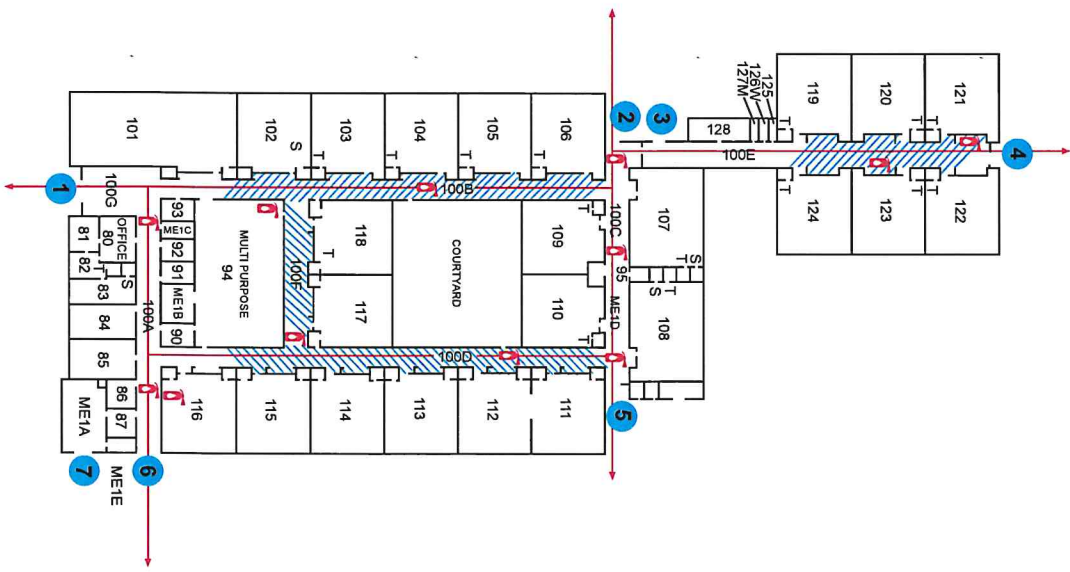
⚡ Automated External Defibrillator (AED)



We are dedicated to the safety of our students and staff.

FIRE AND TORNADO SAFETY MAP

The Halik Professional Development Center
4200 Wainwright Ave., Lansing, MI



In case of emergency call 911.

LEGEND

You Are Here

● Exit

▨ Tornado Shelter

➔ Fire Escape Route

🔥 Fire Extinguisher

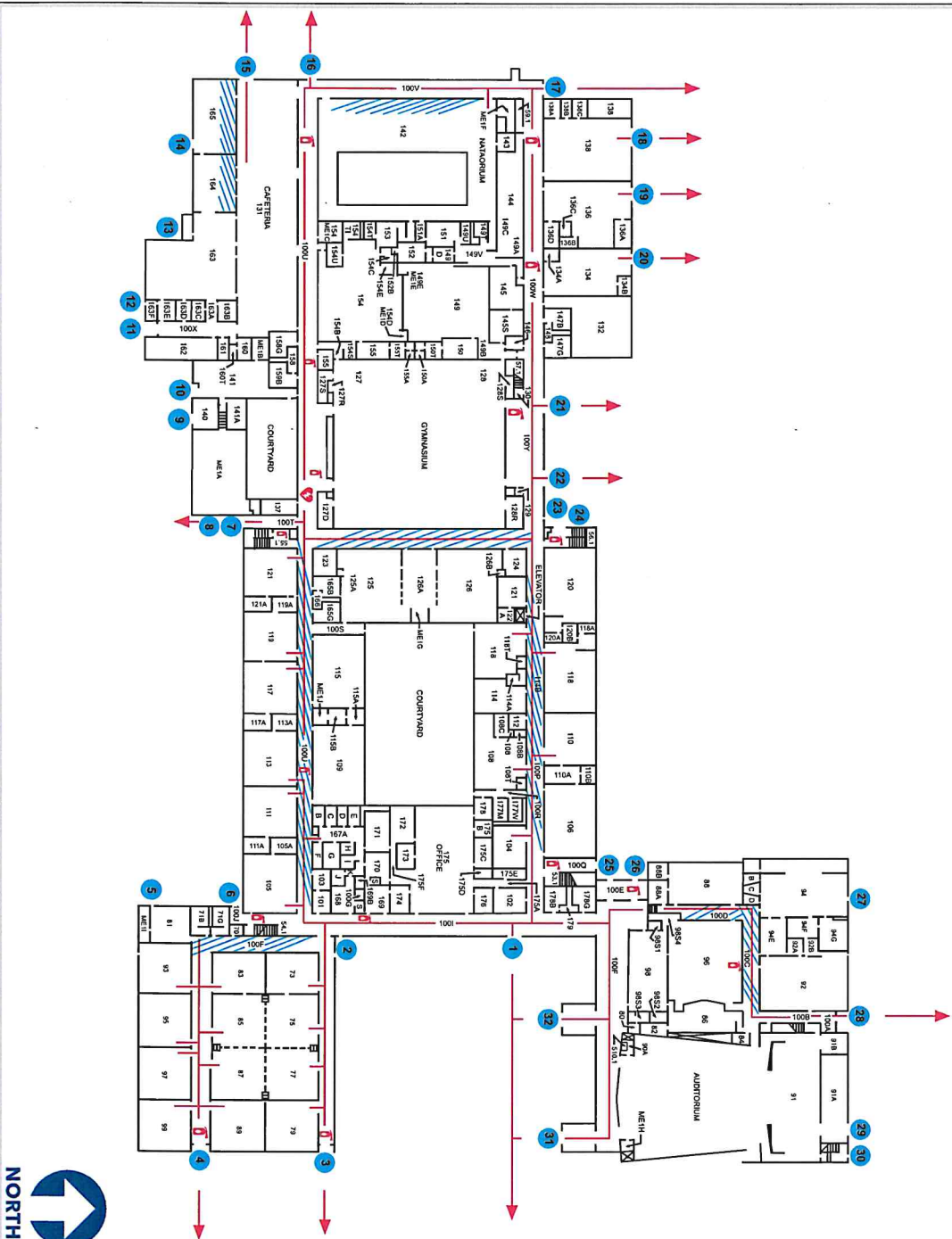
⚡ Automated External Defibrillator (AED)



We are dedicated to the safety of our students and staff.

FIRE AND TORNADO SAFETY MAP

Dwight Rich Middle School
2320 Post Oak Ln., Lansing, MI



In case of emergency call 911.

LEGEND

You Are Here

Exit

Tornado Shelter

Fire Escape Route

Fire Extinguisher

Automated External
Defibrillator (AED)

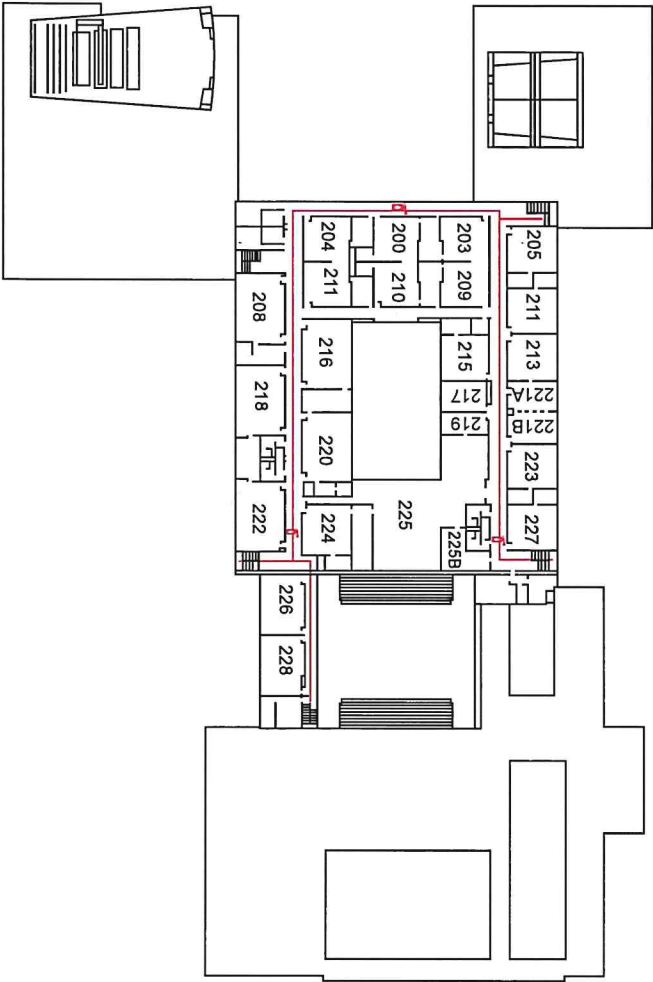


We are dedicated to the safety of our students and staff.

FIRE AND TORNADO SAFETY MAP

Dwight Rich Middle School
2600 Hampden Dr, Lansing, MI

In case of emergency call 911.



NORTH

LEGEND

You Are Here



Exit



Tornado Shelter



Fire Escape Route



Fire Extinguisher



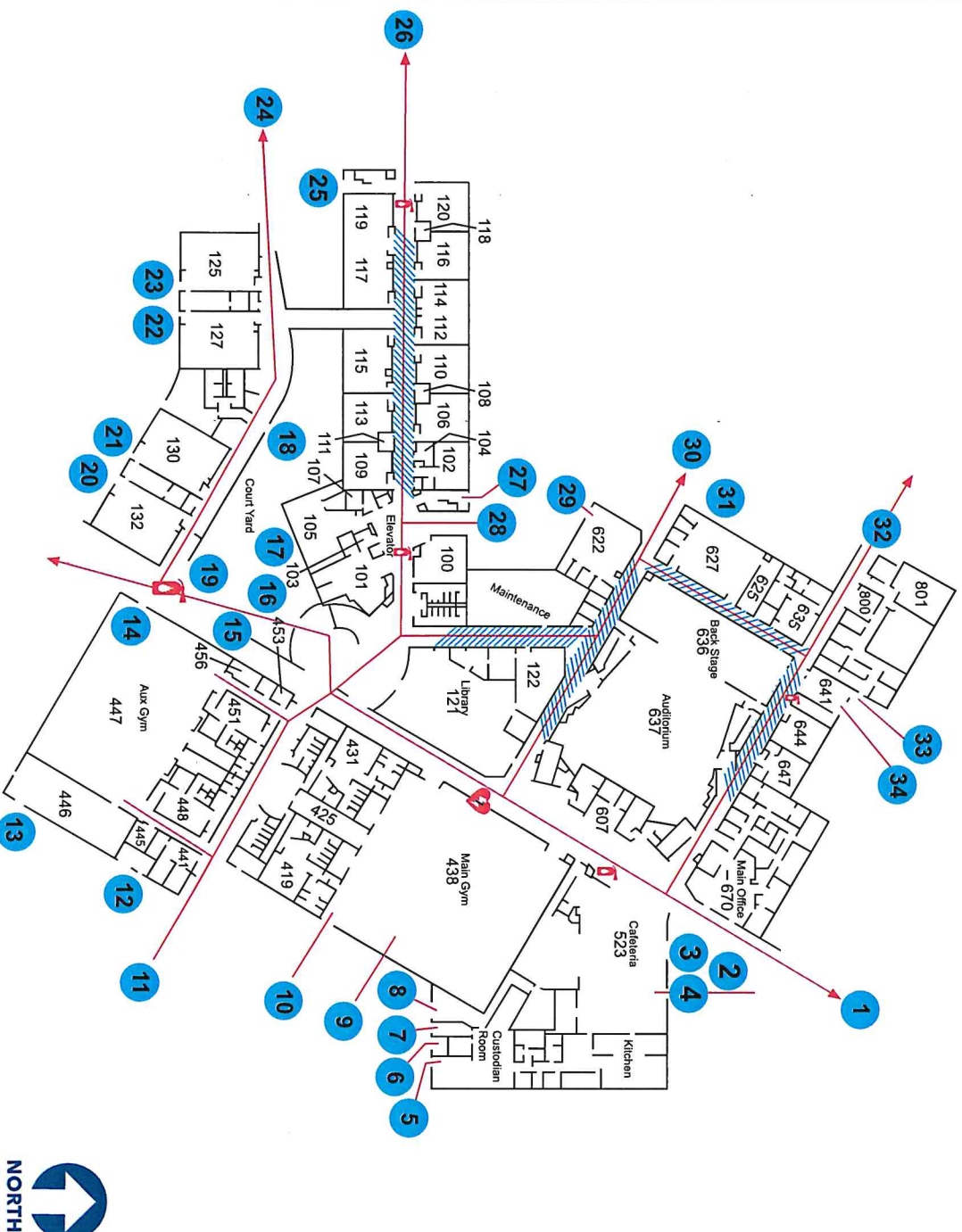
Automated External
Defibrillator (AED)



We are dedicated to the safety of our students and staff.

FIRE AND TORNADO SAFETY MAP

Eastern High School
626 Marshall St., Lansing, MI



In case of emergency call 911.

LEGEND

You Are Here

Exit

Tornado Shelter

Fire Escape Route

Fire Extinguisher

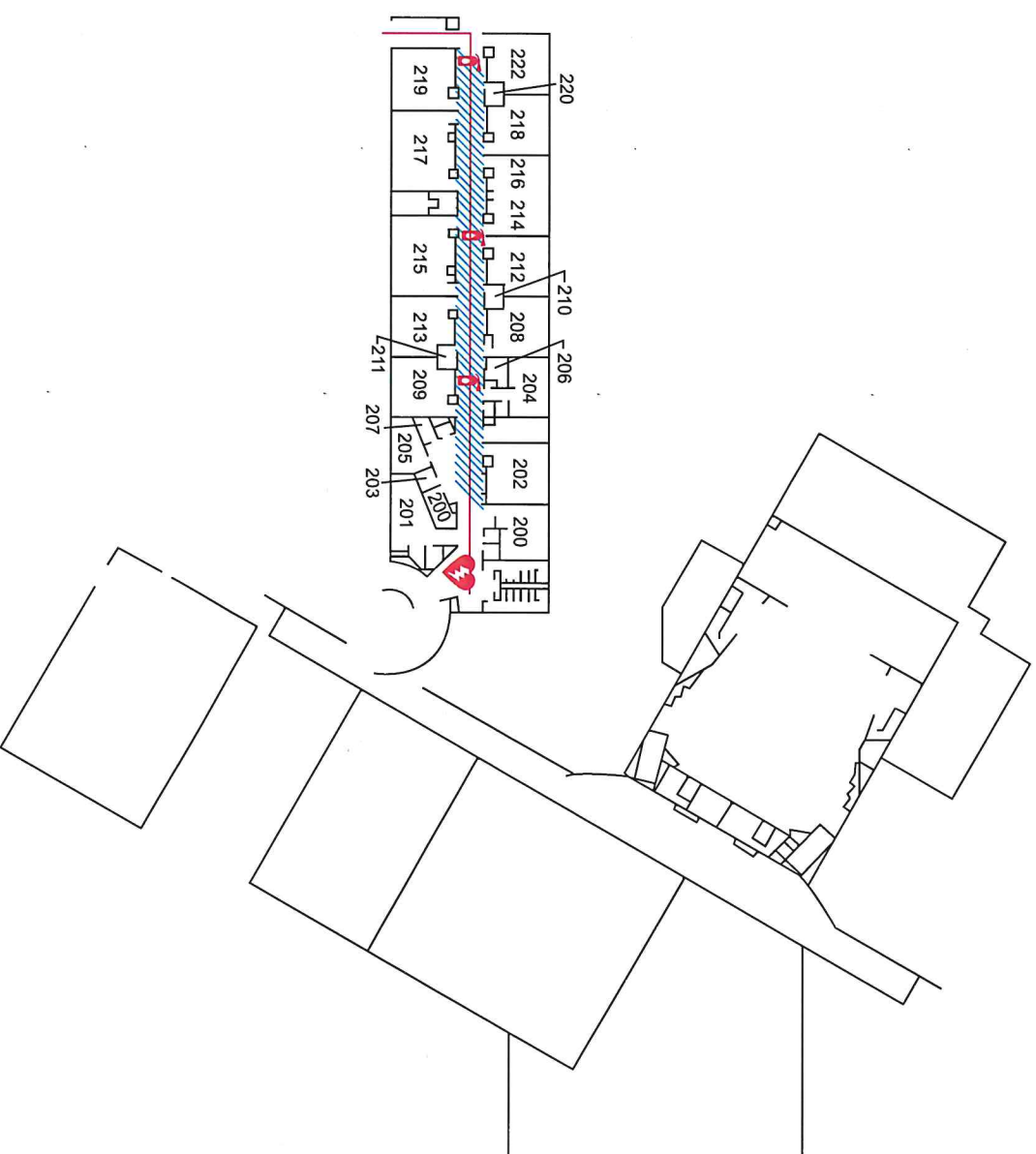
Automated External
Defibrillator (AED)



We are dedicated to the safety of our students and staff.

FIRE AND TORNADO SAFETY MAP

Eastern High School
626 Marshall St., Lansing, MI



In case of emergency call 911.

LEGEND

You Are Here

● Exit

▨ Tornado Shelter

→ Fire Escape Route

🔥 Fire Extinguisher

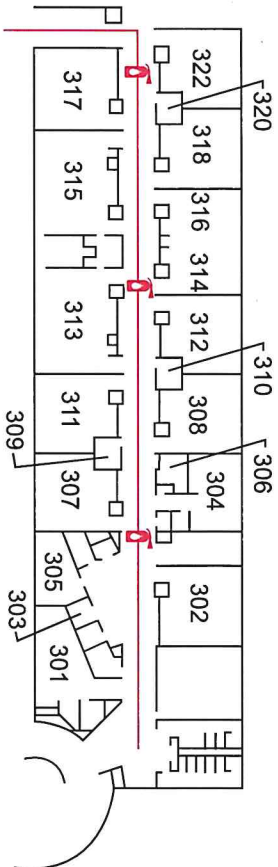
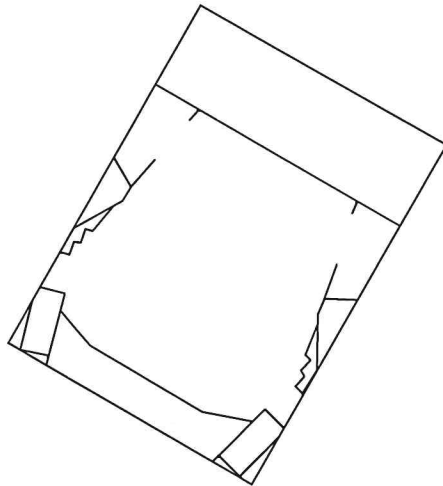
⚡ Automated External
Defibrillator (AED)



We are dedicated to the safety of our students and staff.

FIRE AND TORNADO SAFETY MAP

Eastern High School
626 Marshall St., Lansing, MI



In case of emergency call 911.

LEGEND

You Are Here



Exit



Tornado Shelter



Fire Escape Route



Fire Extinguisher



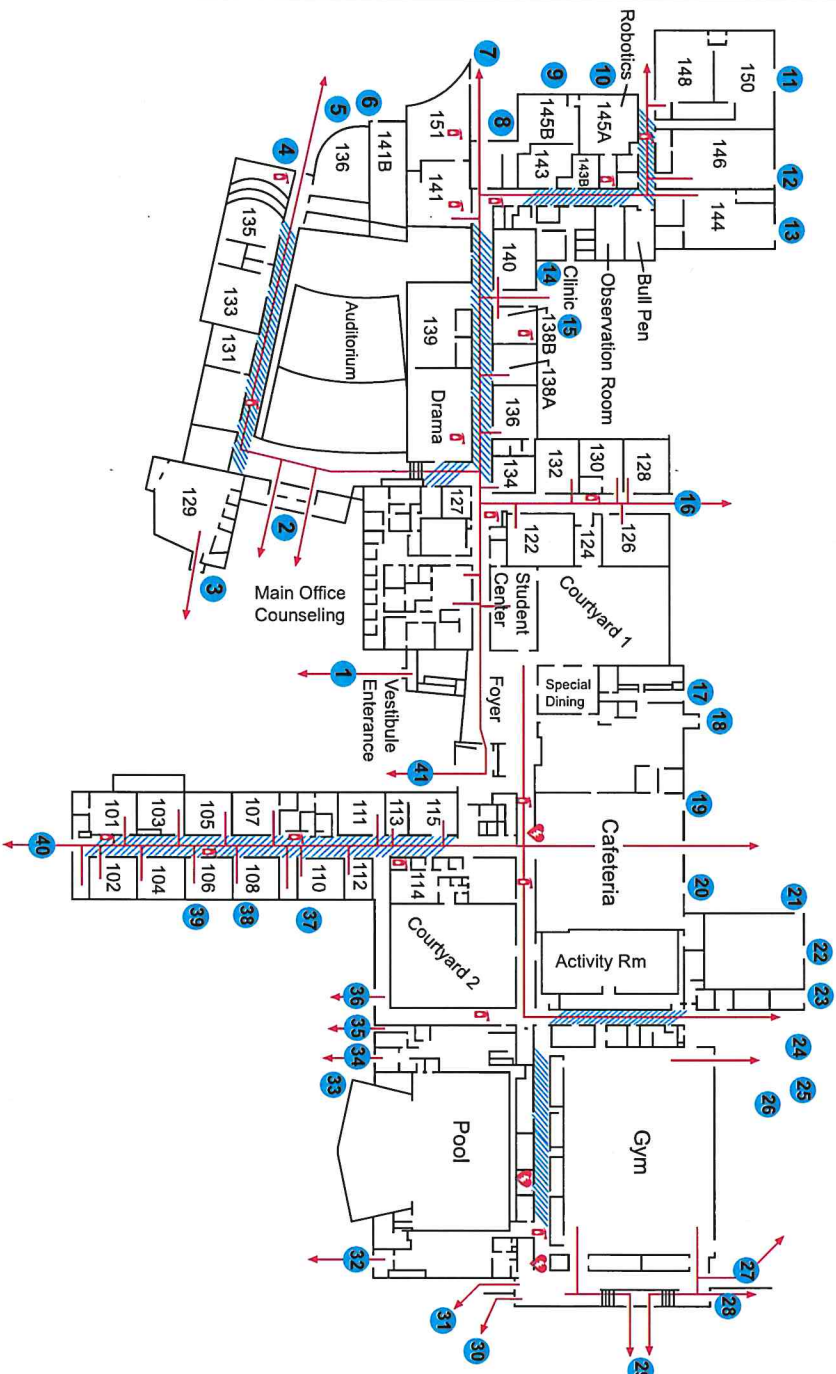
Automated External Defibrillator (AED)



We are dedicated to the safety of our students and staff.

FIRE AND TORNADO SAFETY MAP

Everett High School
3900 Stabler St., Lansing, MI



In case of emergency call 911.

LEGEND

You Are Here

Exit

Tornado Shelter

Fire Escape Route

Fire Extinguisher

Automated External
Defibrillator (AED)



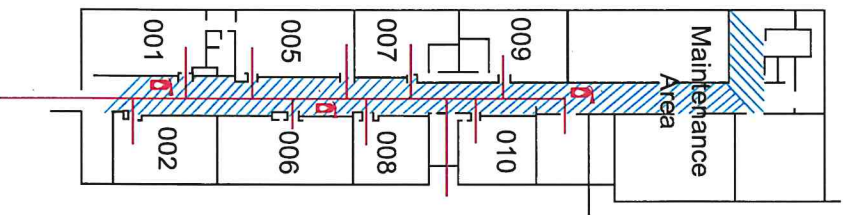
We are dedicated to the safety of our students and staff.

FIRE AND TORNADO SAFETY MAP

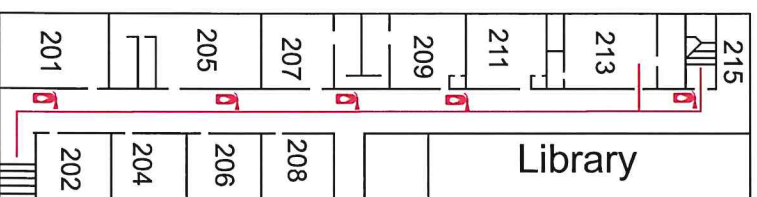
Everett High School
3900 Stabler St., Lansing, MI

In case of emergency call 911.

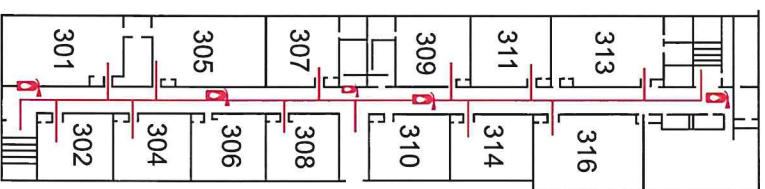
Garden Level



Second Floor



Third Floor



LEGEND

You Are Here

● Exit

▢ Tornado Shelter

➔ Fire Escape Route

🔥 Fire Extinguisher

💓 Automated External
Defibrillator (AED)



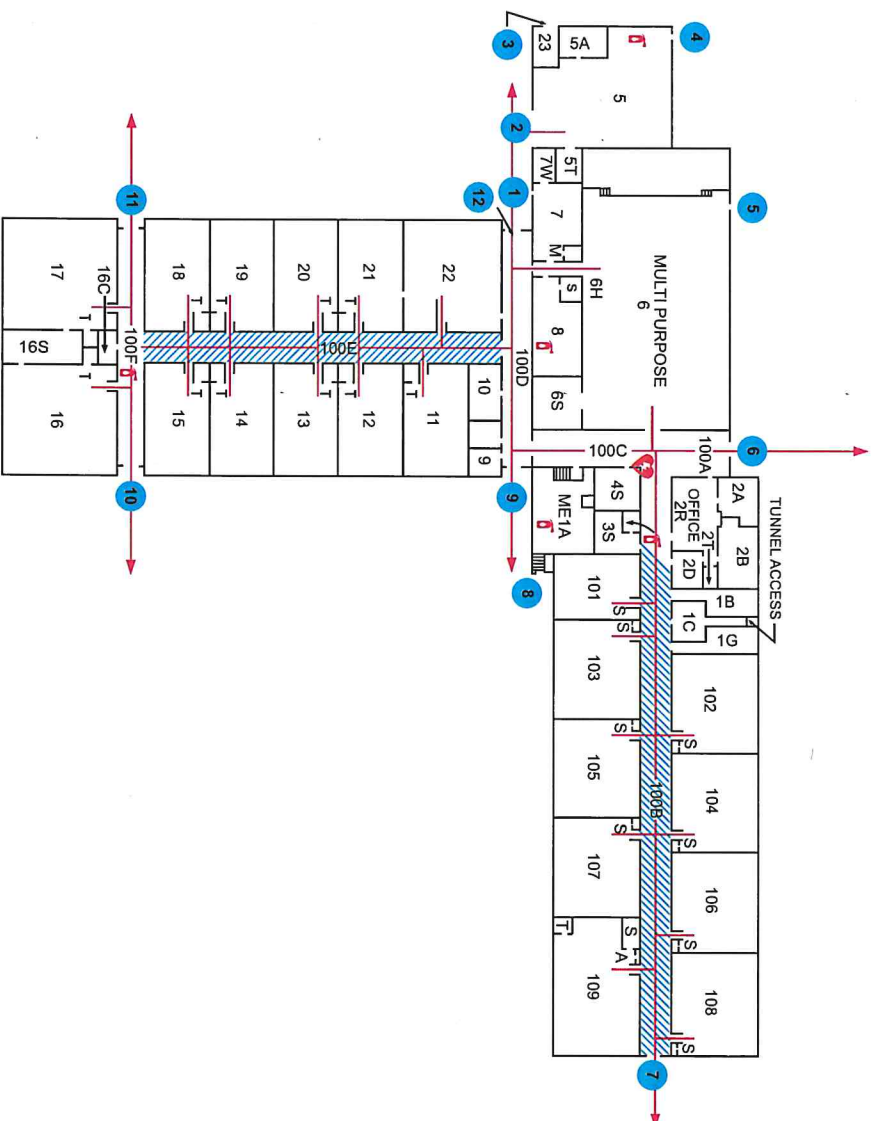
We are dedicated to the safety of our students and staff.



FIRE AND TORNADO SAFETY MAP

Forest View Elementary School
3119 Stoneleigh Dr., Lansing, MI

In case of emergency call 911.



LEGEND

You Are Here



Exit



Tornado Shelter



Fire Escape Route



Fire Extinguisher



Automated External
Defibrillator (AED)

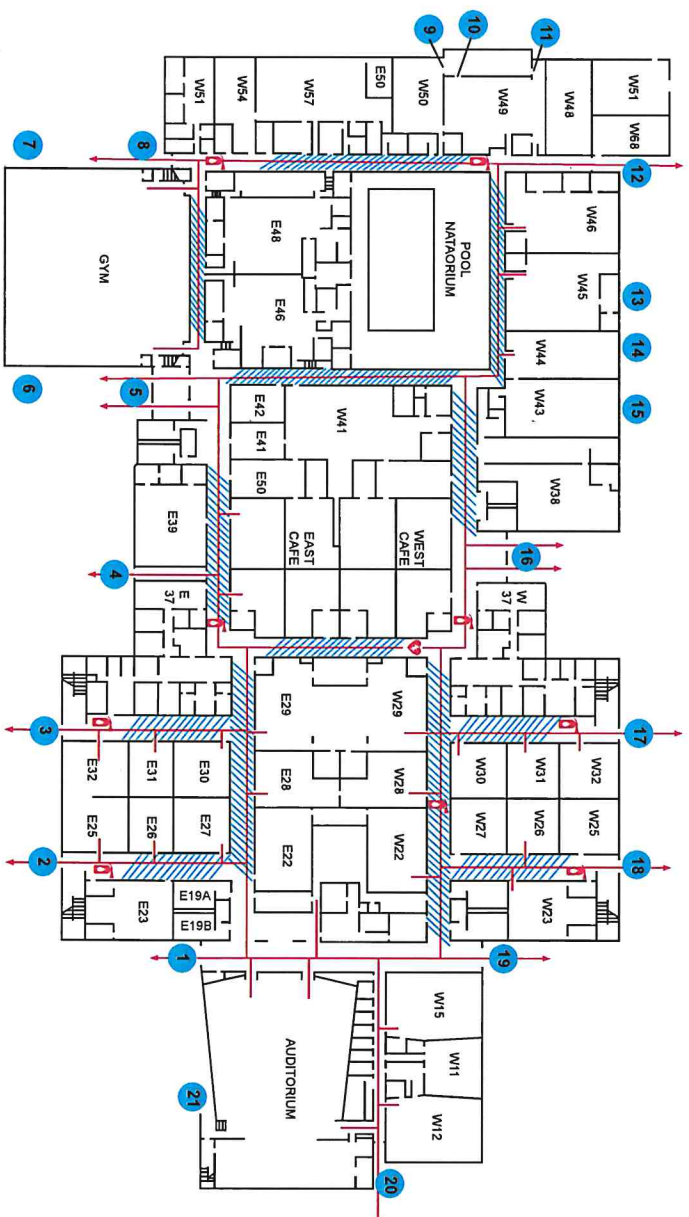


We are dedicated to the safety of our students and staff.

FIRE AND TORNADO SAFETY MAP

Gardner International School
333 Dahila Dr., Lansing, MI

In case of emergency call 911.



LEGEND

You Are Here



Exit



Tornado Shelter



Fire Escape Route



Fire Extinguisher



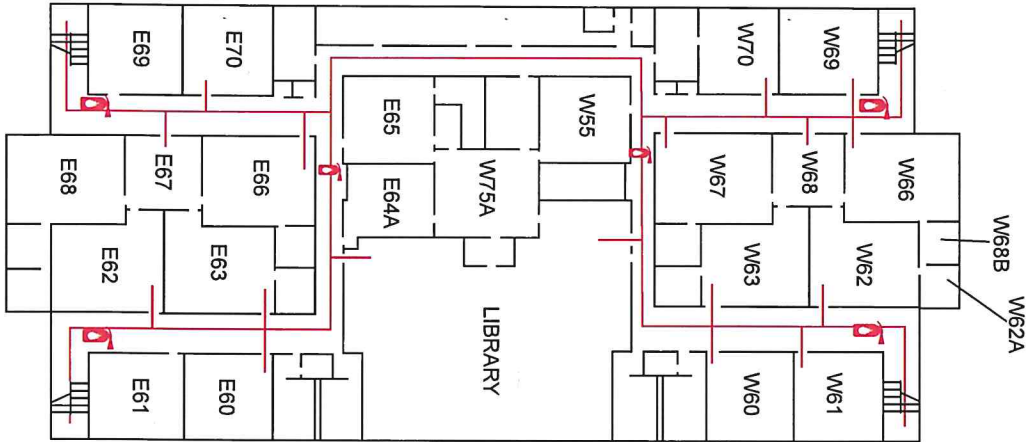
Automated External
Defibrillator (AED)



We are dedicated to the safety of our students and staff.

FIRE AND TORNADO SAFETY MAP

Gardner International School
333 Dahlia Dr., Lansing, MI



In case of emergency call 911.

LEGEND

You Are Here

Exit

Tornado Shelter

Fire Escape Route

Fire Extinguisher

Automated External
Defibrillator (AED)



We are dedicated to the safety of our students and staff.

Gier Park Elementary School
401 E. Geir st., Lansing, MI



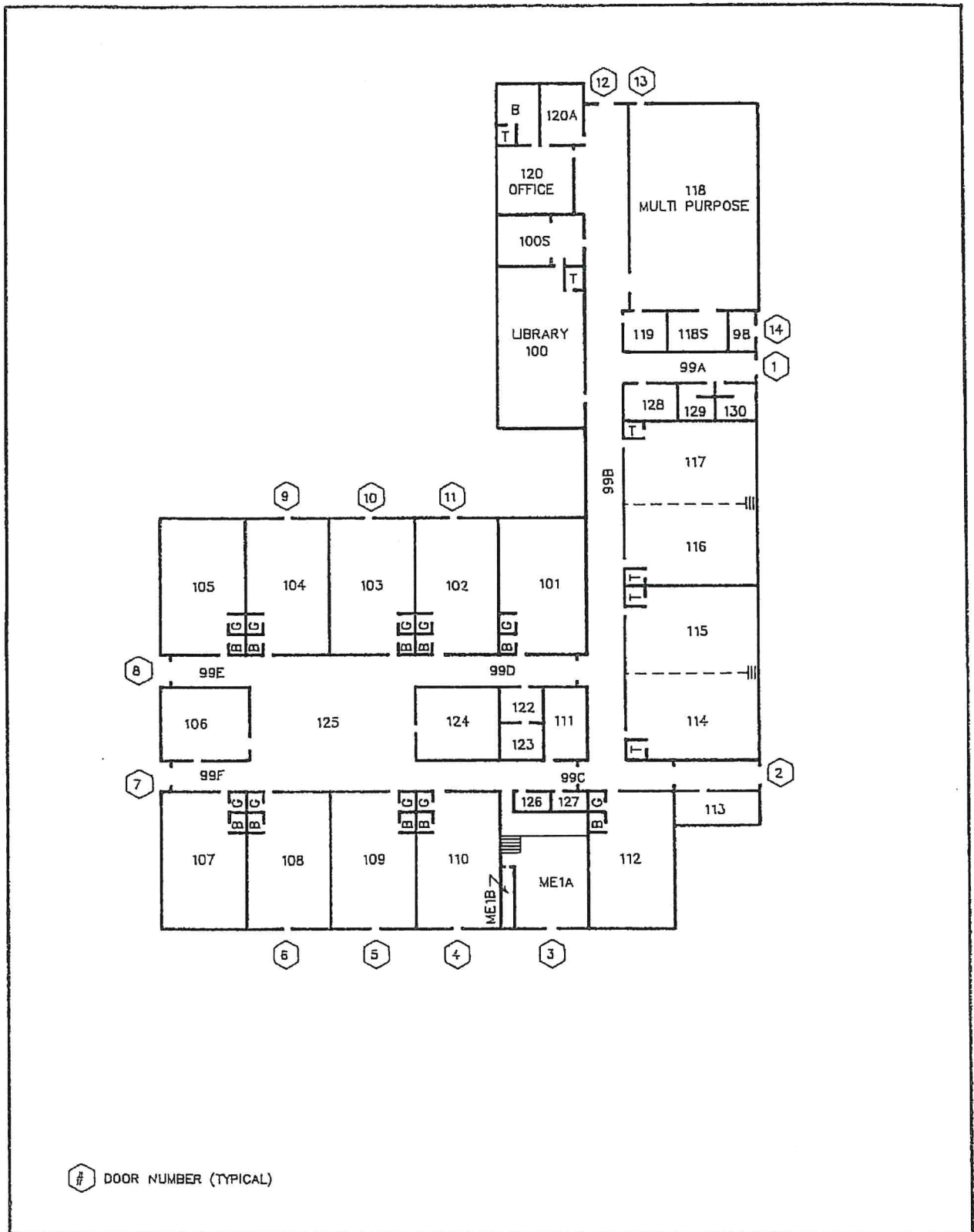
In case of emergency call 911.

Exit

→ Fire Escape Route

 Automated External
Defibrillator (AED)

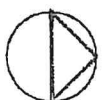




HARLEY FRANKS ELEM.

2924 NEWARK AVENUE
LANSING, MICHIGAN 48911

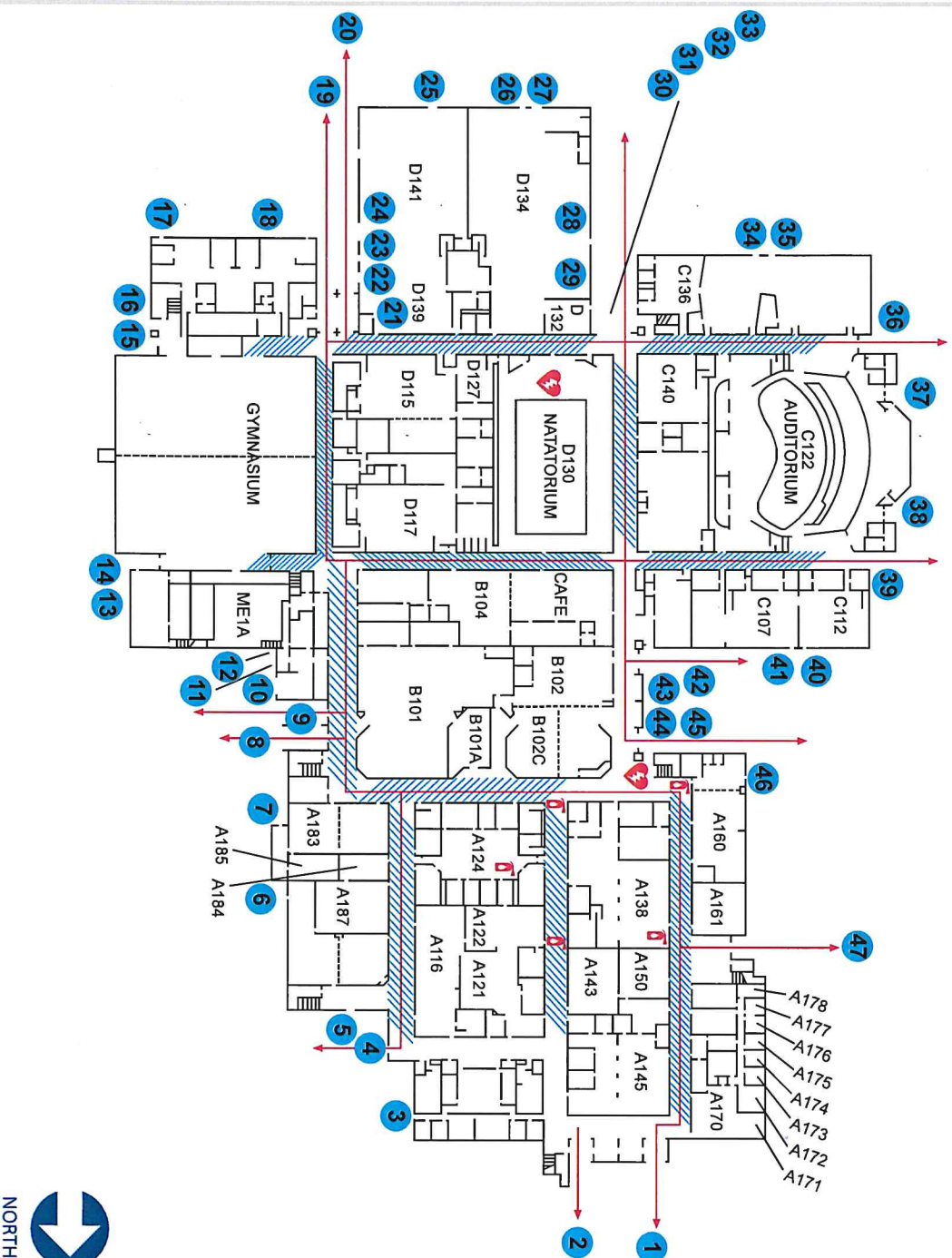
GROUND LEVEL PLAN



NORTH

FIRE AND TORNADO SAFETY MAP

Harry W. Hill Center
8515 Wise Rd., Lansing, MI



In case of emergency call 911.

LEGEND

You Are Here

● Exit

▨ Tornado Shelter

→ Fire Escape Route

🔥 Fire Extinguisher

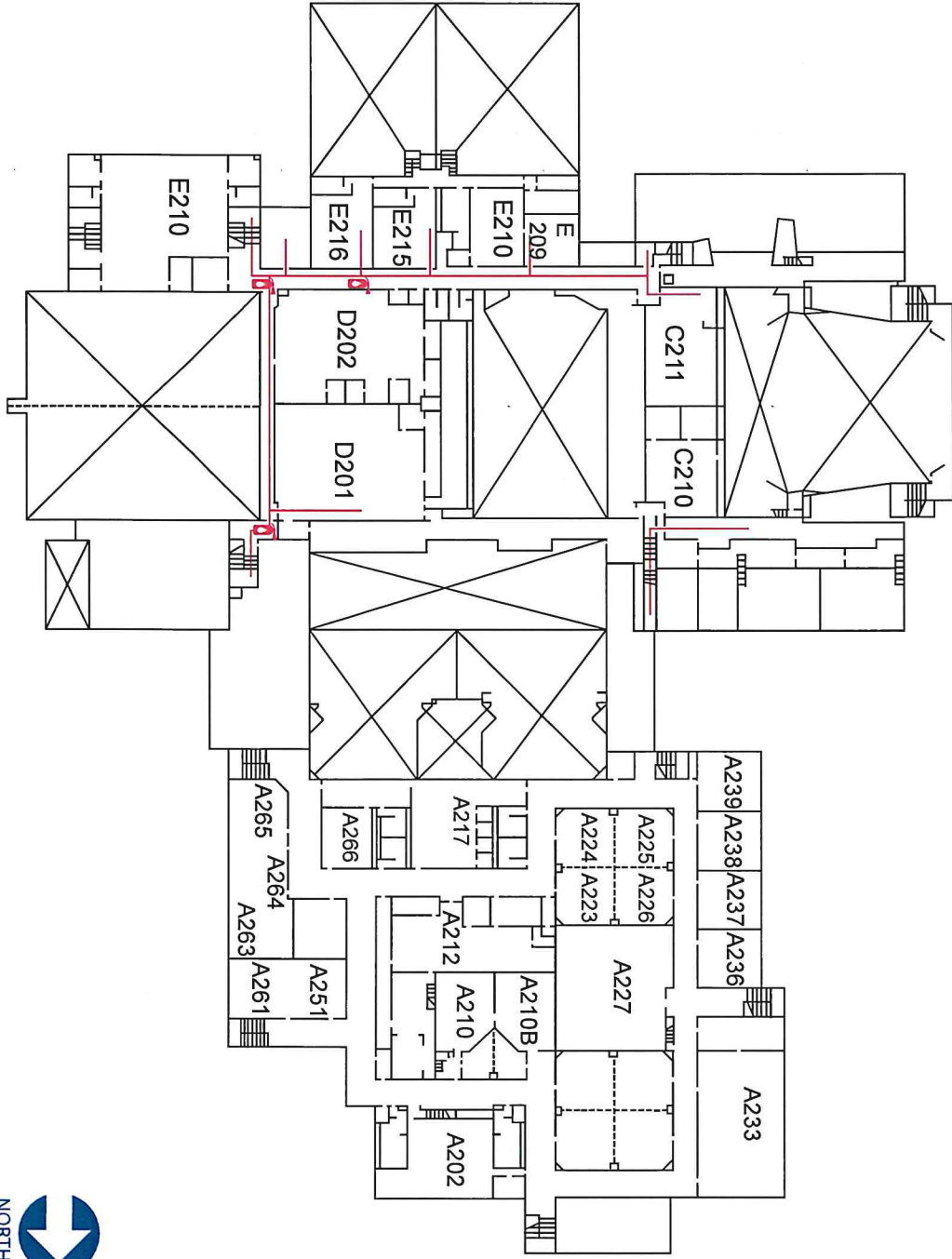
❤ Automated External Defibrillator (AED)



We are dedicated to the safety of our students and staff.

FIRE AND TORNADO SAFETY MAP

Harry W. Hill Center
5815 Wise Rd., Lansing, MI



In case of emergency call 911.

LEGEND

You Are Here

Exit

Tornado Shelter

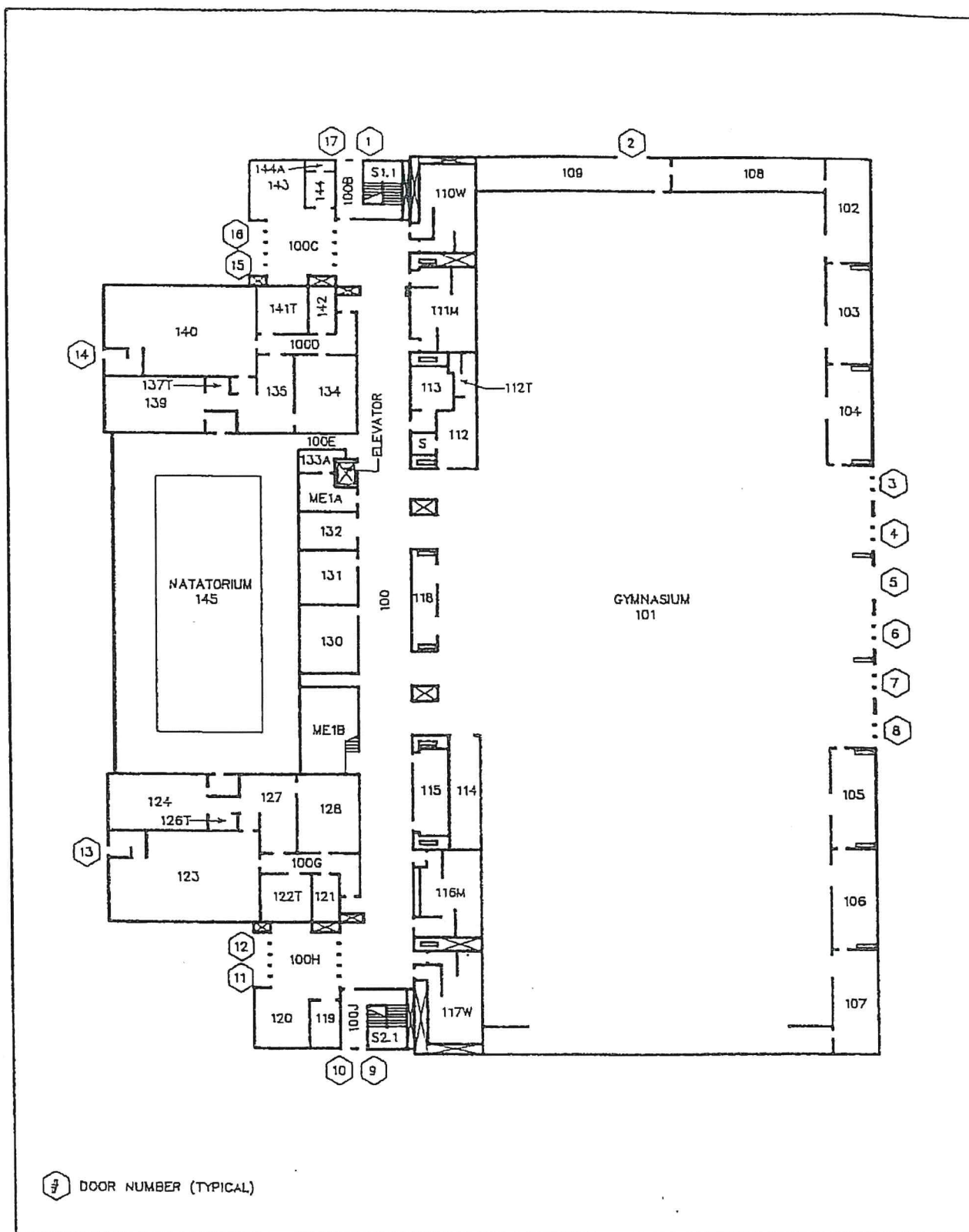
Fire Escape Route

Fire Extinguisher

Automated External
Defibrillator (AED)



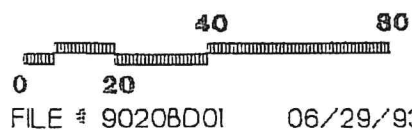
We are dedicated to the safety of our students and staff.



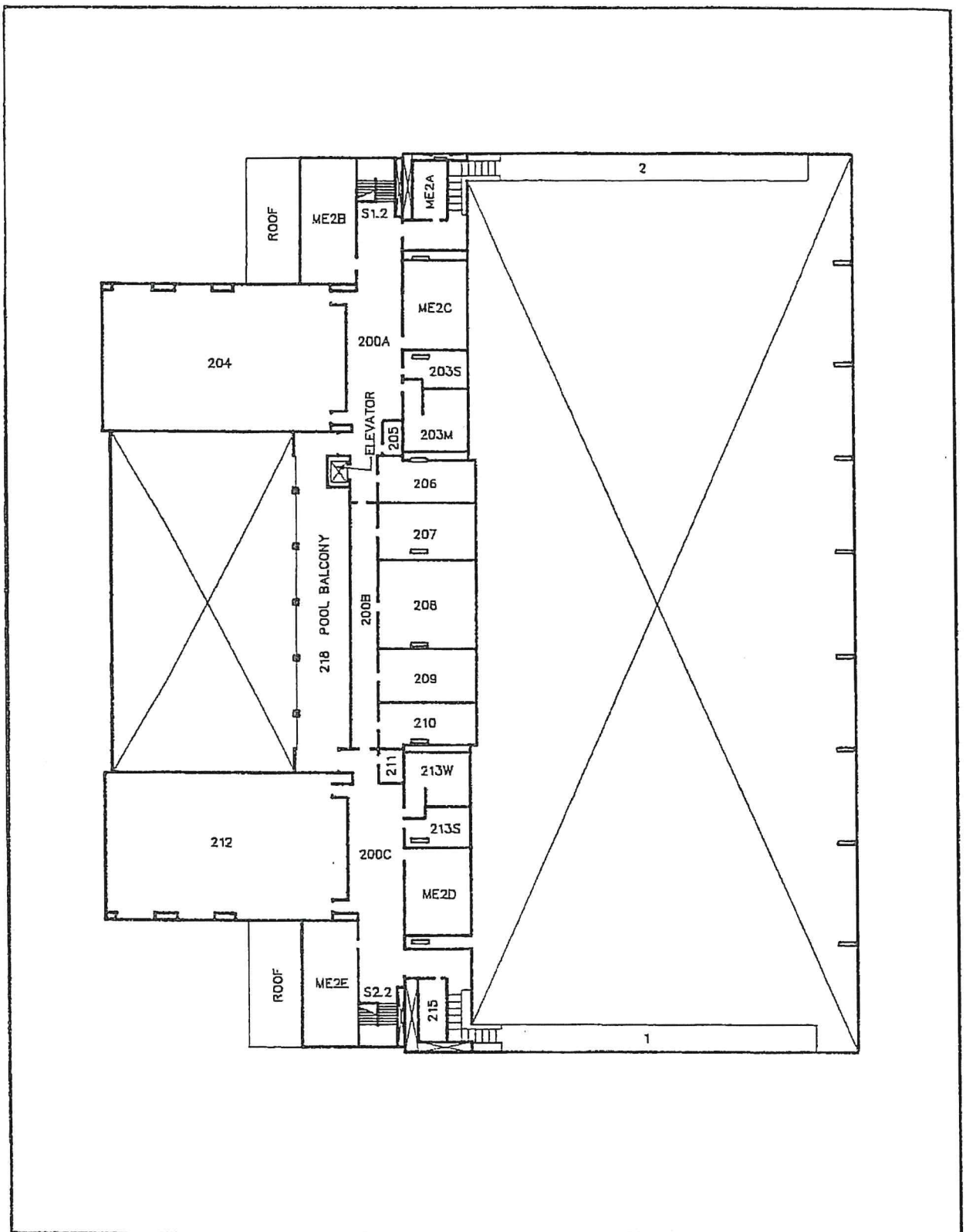
JOHNSON FIELD HOUSE

400 N. PENNSYLVANIA AVE.
LANSING, MICHIGAN 48912

GROUND LEVEL PLAN



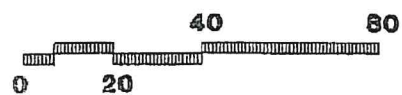
NORT



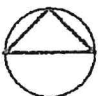
JOHNSON FIELD HOUSE

400 N. PENNSYLVANIA AVE.
LANSING, MICHIGAN 48912

SECOND LEVEL PLAN



FILE # 9020BD01 07/01/93



NORTH

Kendon Elementary School
827 Kendon dr., Lansing, MI



You Are Here

Exit



Tornado Shelter

→ Fire Escape Route

Fire Extinguisher

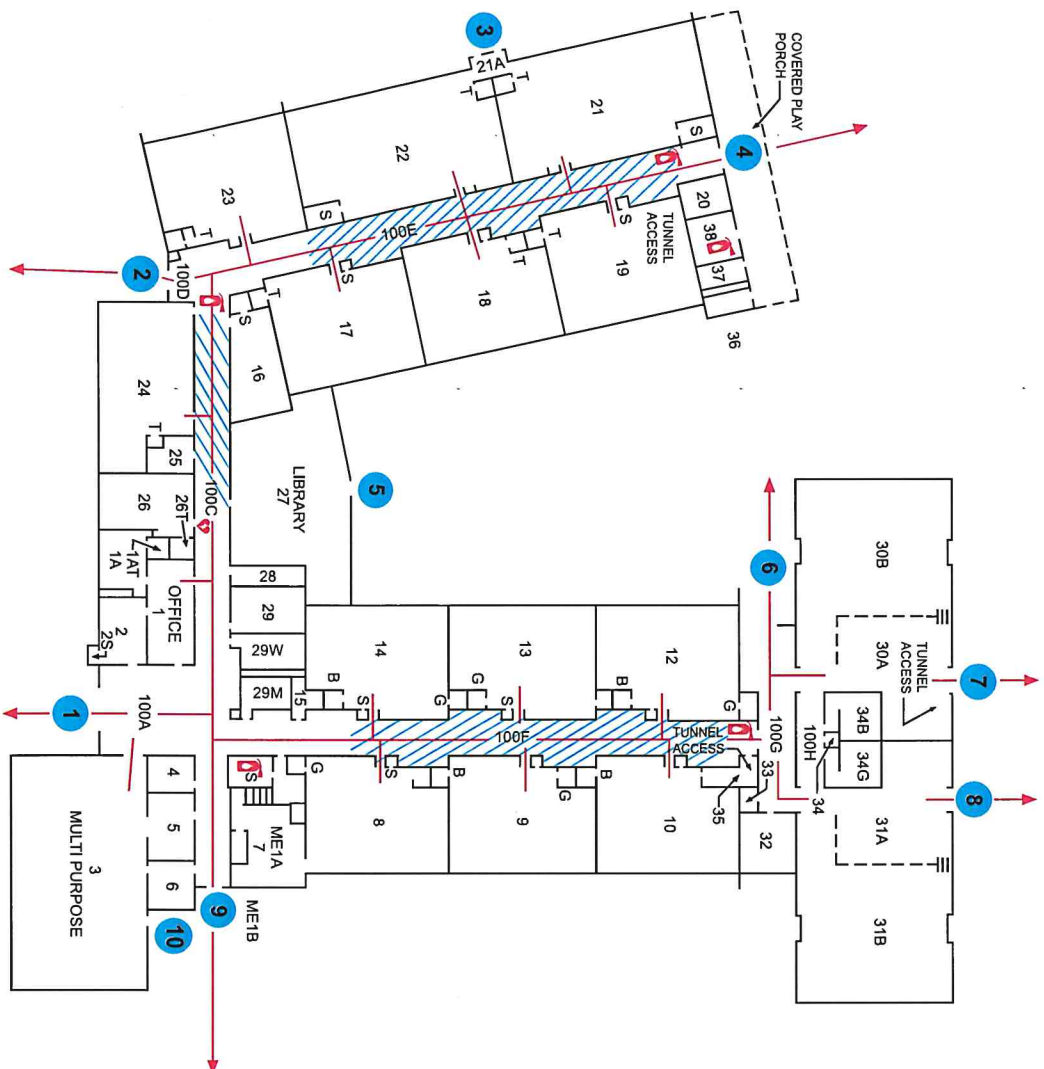
 Automated External
Defibrillator (AED)



We are dedicated to the safety of our students and staff.

FIRE AND TORNADO SAFETY MAP

Lewton Elementary School
2000 Lewton Pl. Lansing, Michigan 48911



In case of emergency call 911.

LEGEND

You Are Here

● Exit

▨ Tornado Shelter

→ Fire Escape Route

🔥 Fire Extinguisher

💓 Automated External
Defibrillator (AED)



We are dedicated to the safety of our students and staff.

Lyons Elementary School
2901 Lyons Avenue, Lansing, MI

LEGEND

Exit



Exit



Tornado Shelter



Fire Escape Route



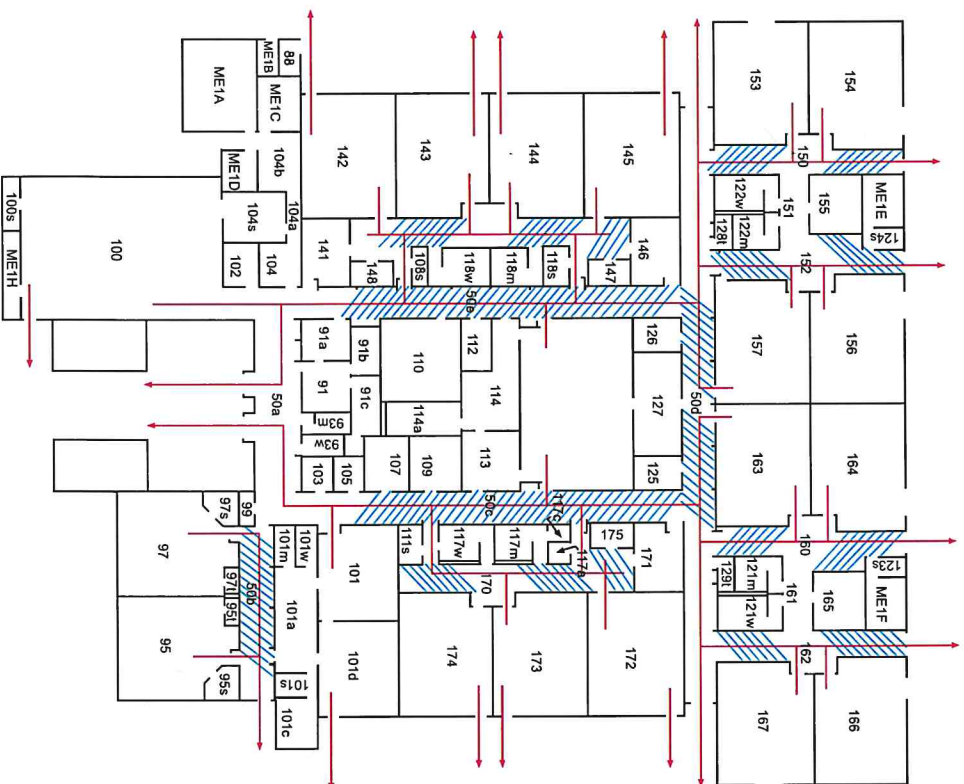
Fire Extinguisher

Automated External
Defibrillator (AED)

We are dedicated to the safety of our students and staff.

FIRE AND TORNADO SAFETY MAP

Mt. Hope STEAM
4000 Woodcreek Lane, Lansing, MI



In case of emergency call 911.

LEGEND

You Are Here



Exit



Tornado Shelter



Fire Escape Route



Fire Extinguisher



Automated External
Defibrillator (AED)

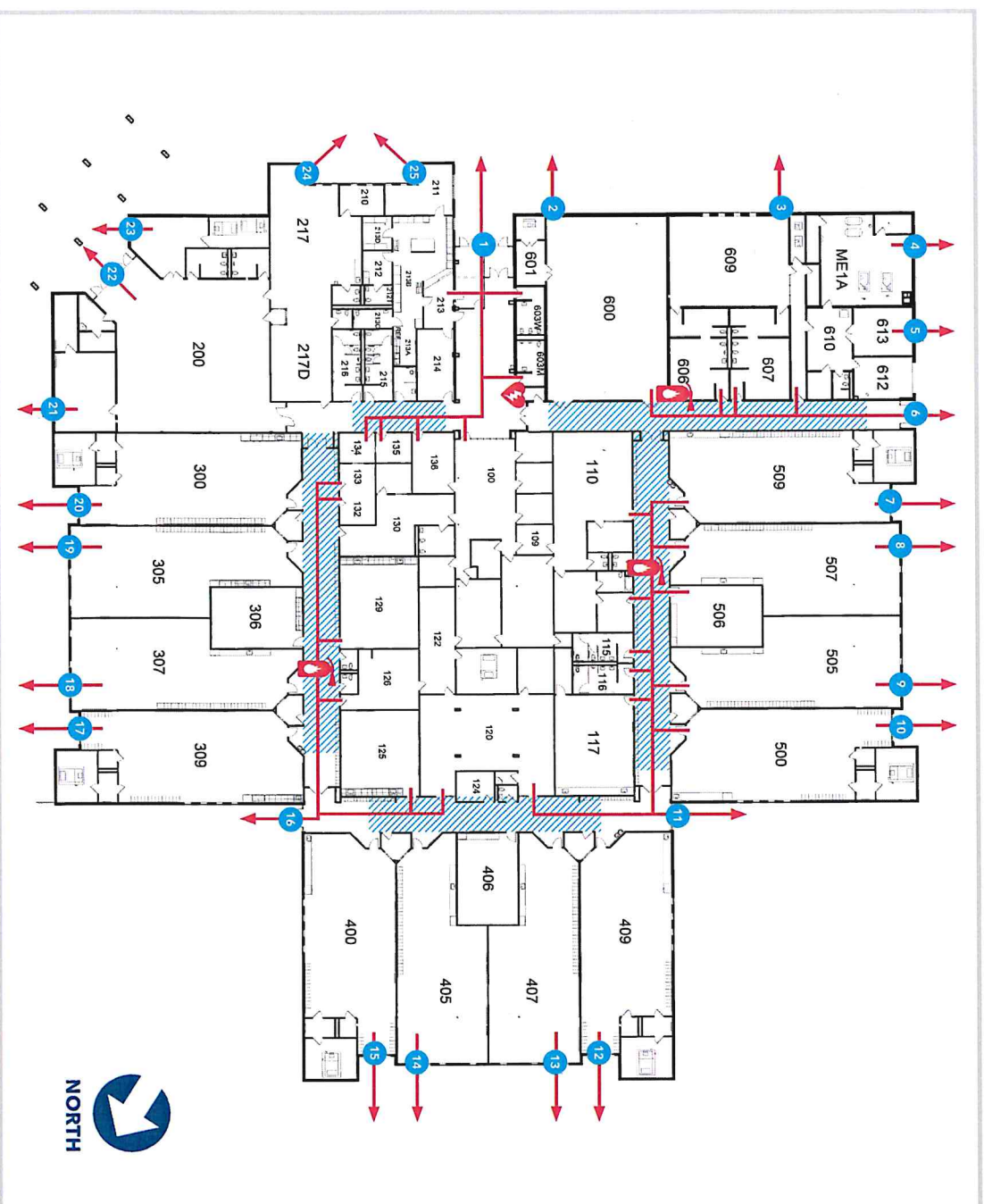


We are dedicated to the safety of our students and staff.

FIRE AND TORNADO SAFETY MAP

North Elementary
333 E Miller Rd., Lansing, MI

In case of emergency call 911.



LEGEND

You Are Here

● Exit

▨ Tornado Shelter

➔ Fire Escape Route

🧯 Fire Extinguisher

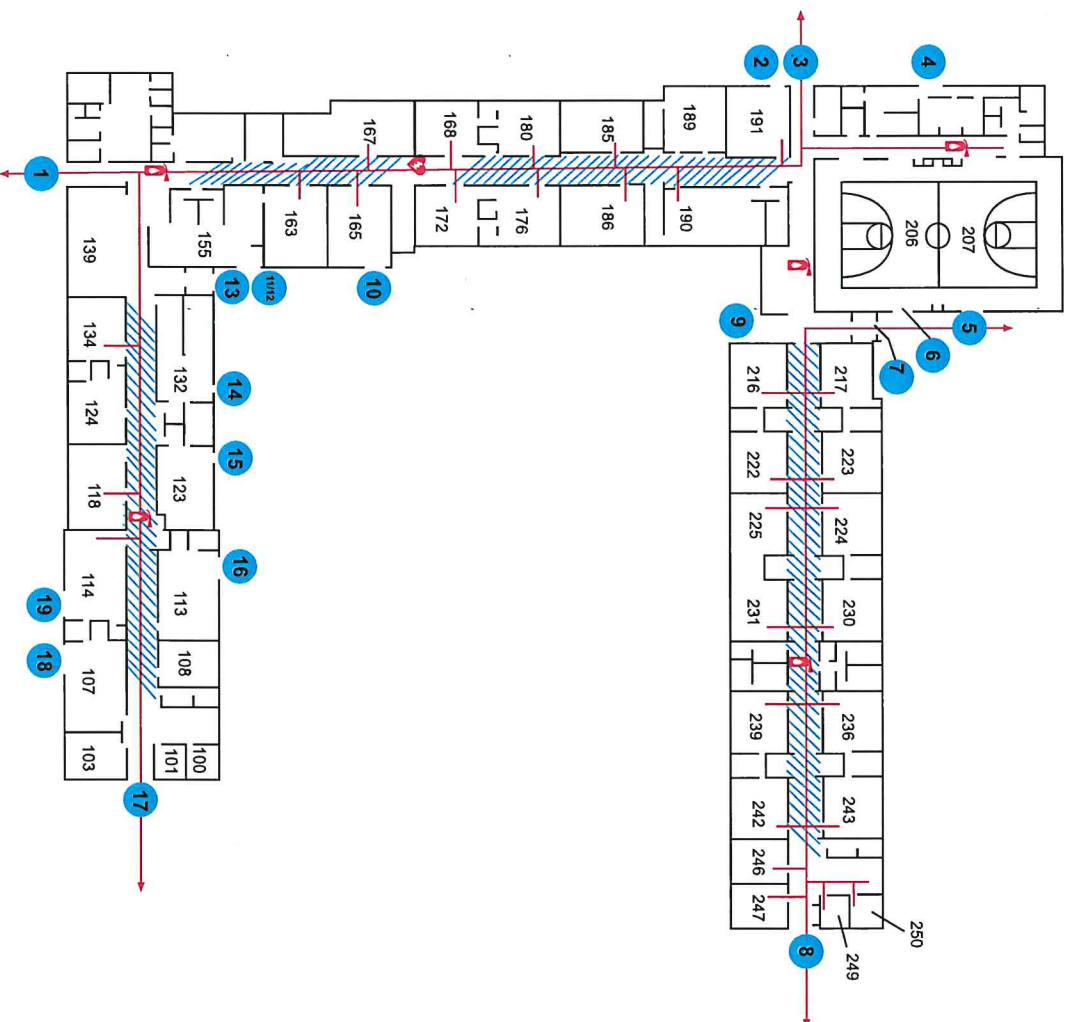
⚡ Automated External Defibrillator (AED)



We are dedicated to the safety of our students and staff.

FIRE AND TORNADO SAFETY MAP

Pattengill Academy
815 North Fairview Ave., Lansing, MI



In case of emergency call 911.

LEGEND

You Are Here

● Exit

▨ Tornado Shelter

→ Fire Escape Route

🔥 Fire Extinguisher

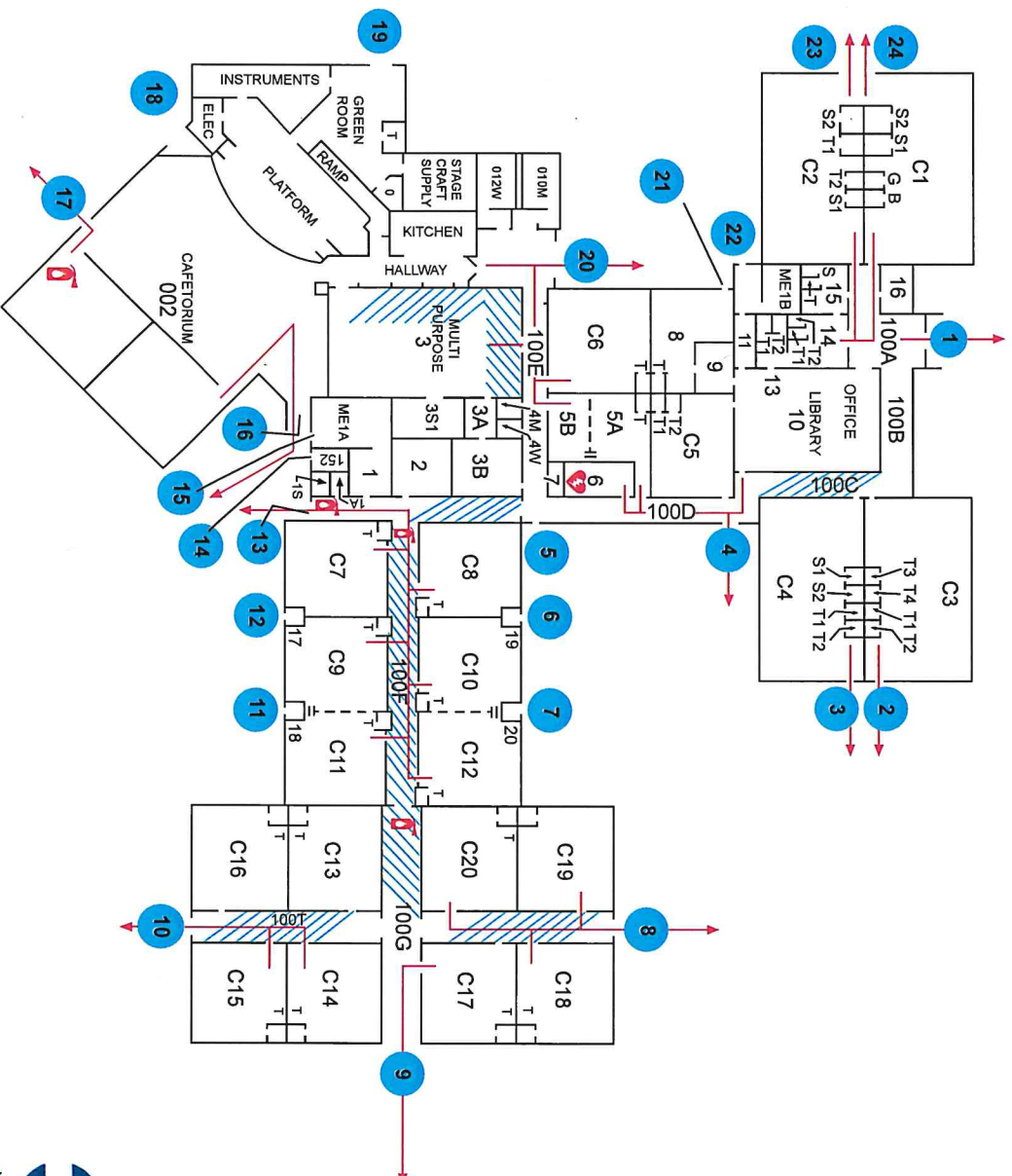
⚡ Automated External
Defibrillator (AED)



We are dedicated to the safety of our students and staff.

FIRE AND TORNADO SAFETY MAP

Pleasantview Elementary
16501 Toepfer Dr., Lansing, MI



In case of emergency call 911.

LEGEND

You Are Here

● Exit

▨ Tornado Shelter

→ Fire Escape Route

🔥 Fire Extinguisher

💓 Automated External Defibrillator (AED)

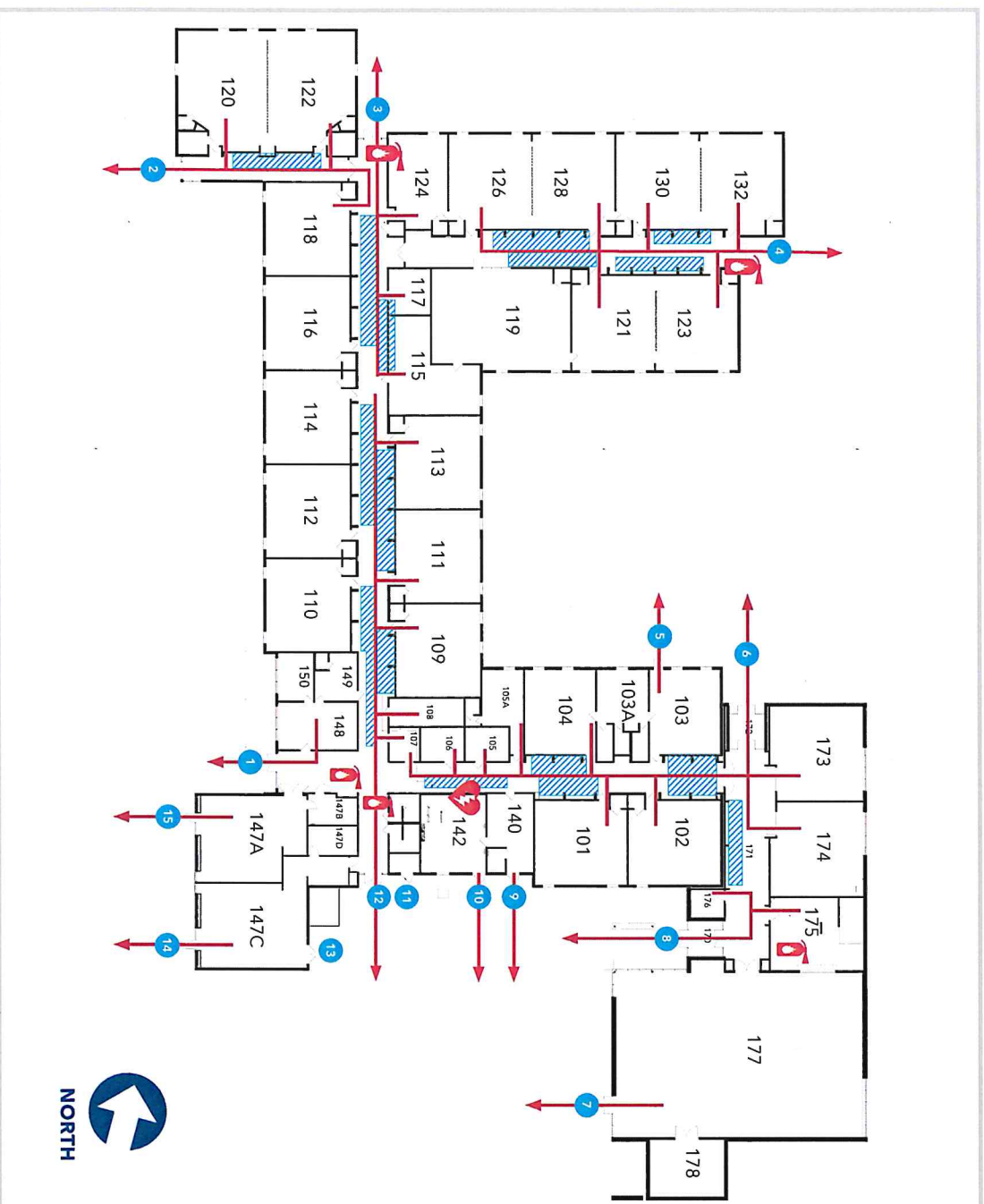


We are dedicated to the safety of our students and staff.

FIRE AND TORNADO SAFETY MAP

Post Oak
2320 Post Oak Ln., Lansing, MI

In case of emergency call 911.



LEGEND

You Are Here

● Exit

▨ Tornado Shelter

→ Fire Escape Route

🧯 Fire Extinguisher

⚡ Automated External Defibrillator (AED)



We are dedicated to the safety of our students and staff.

REO School
1221 Reo Court, Lansing, MI

LEGEND

You Are Here

● Exit



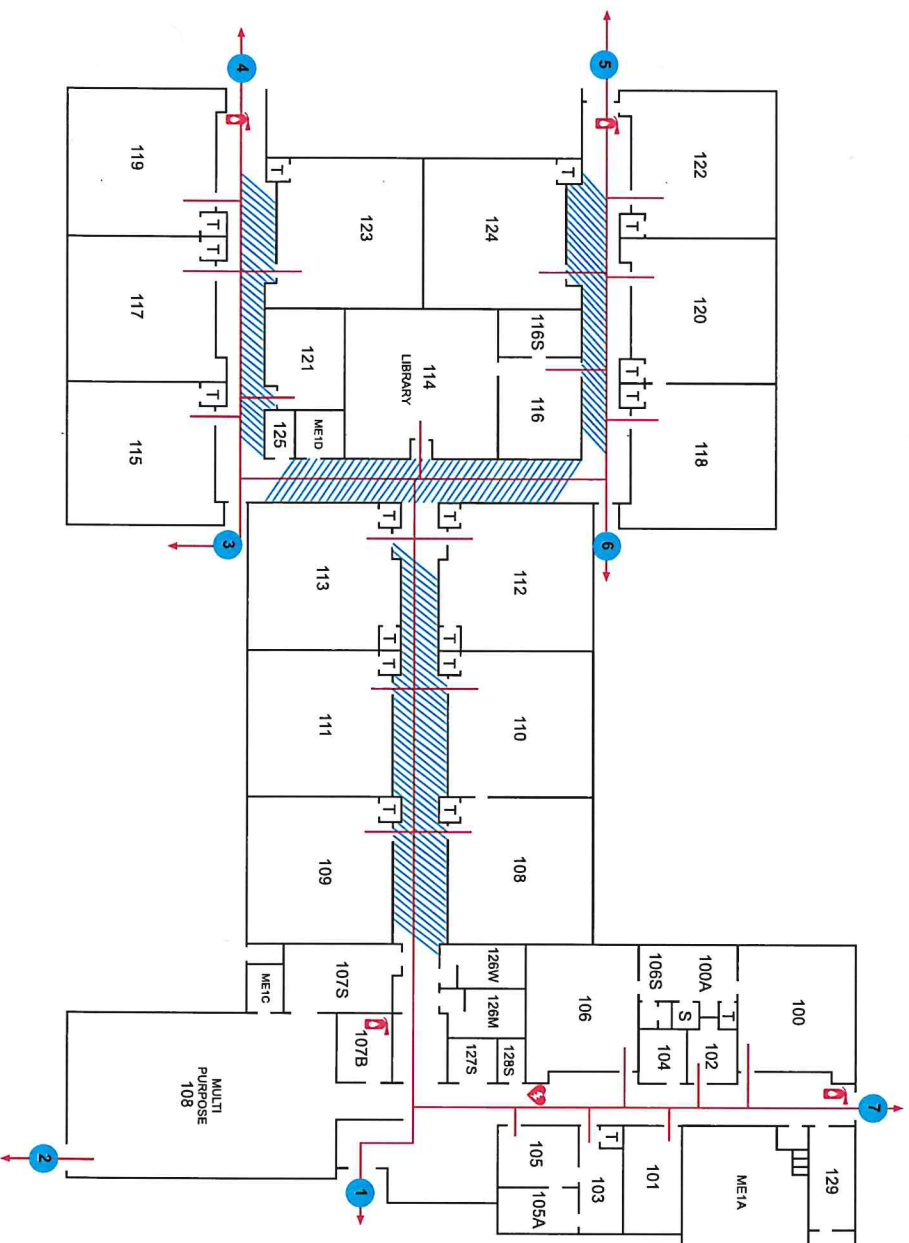
Tornado Shelter



Fire Escape Route
Fire Extinguisher

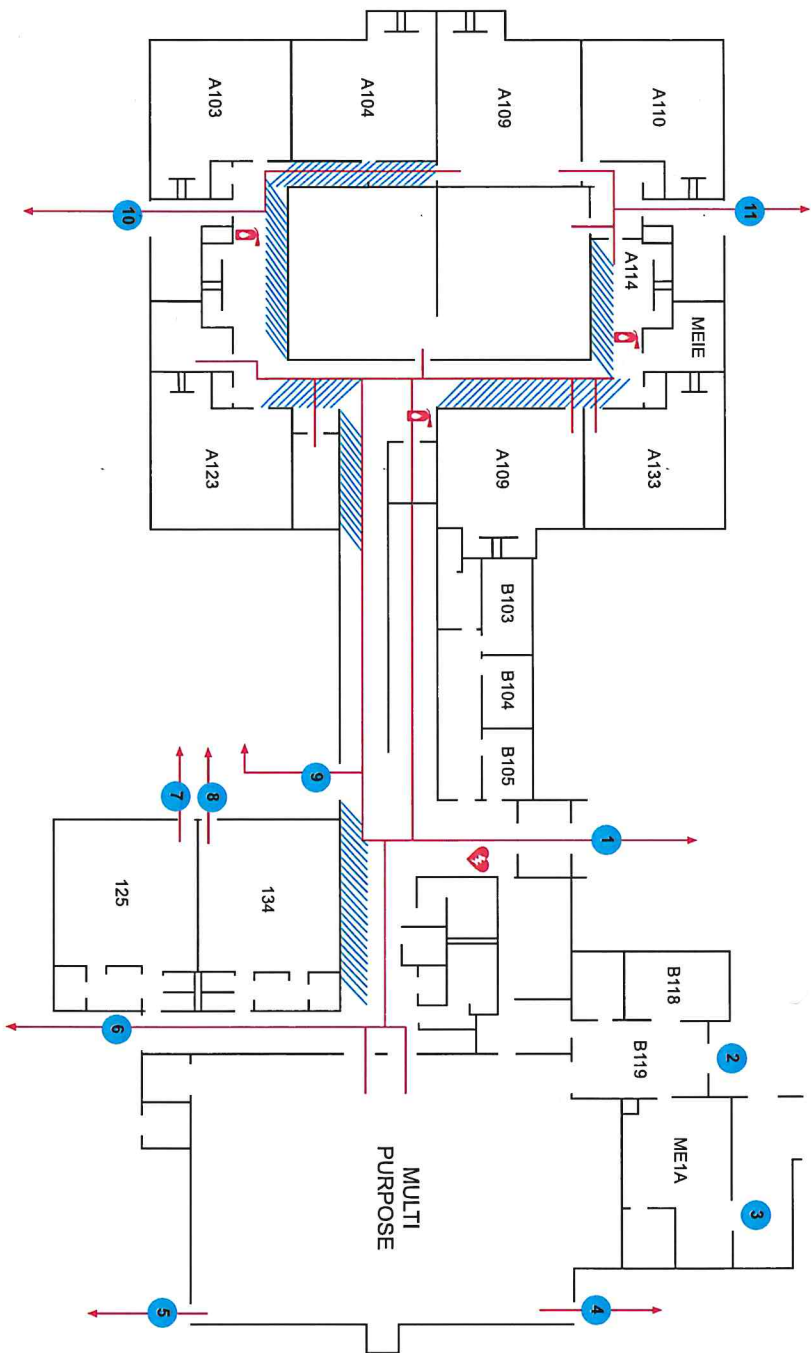
Automated External
Defibrillator (AED)

We are dedicated to the safety of our students and staff.



FIRE AND TORNADO SAFETY MAP

Riddle Elementary School
221 Huron Street, Lansing, MI



In case of emergency call 911.

LEGEND

You Are Here

● Exit

▨ Tornado Shelter

→ Fire Escape Route

🔥 Fire Extinguisher

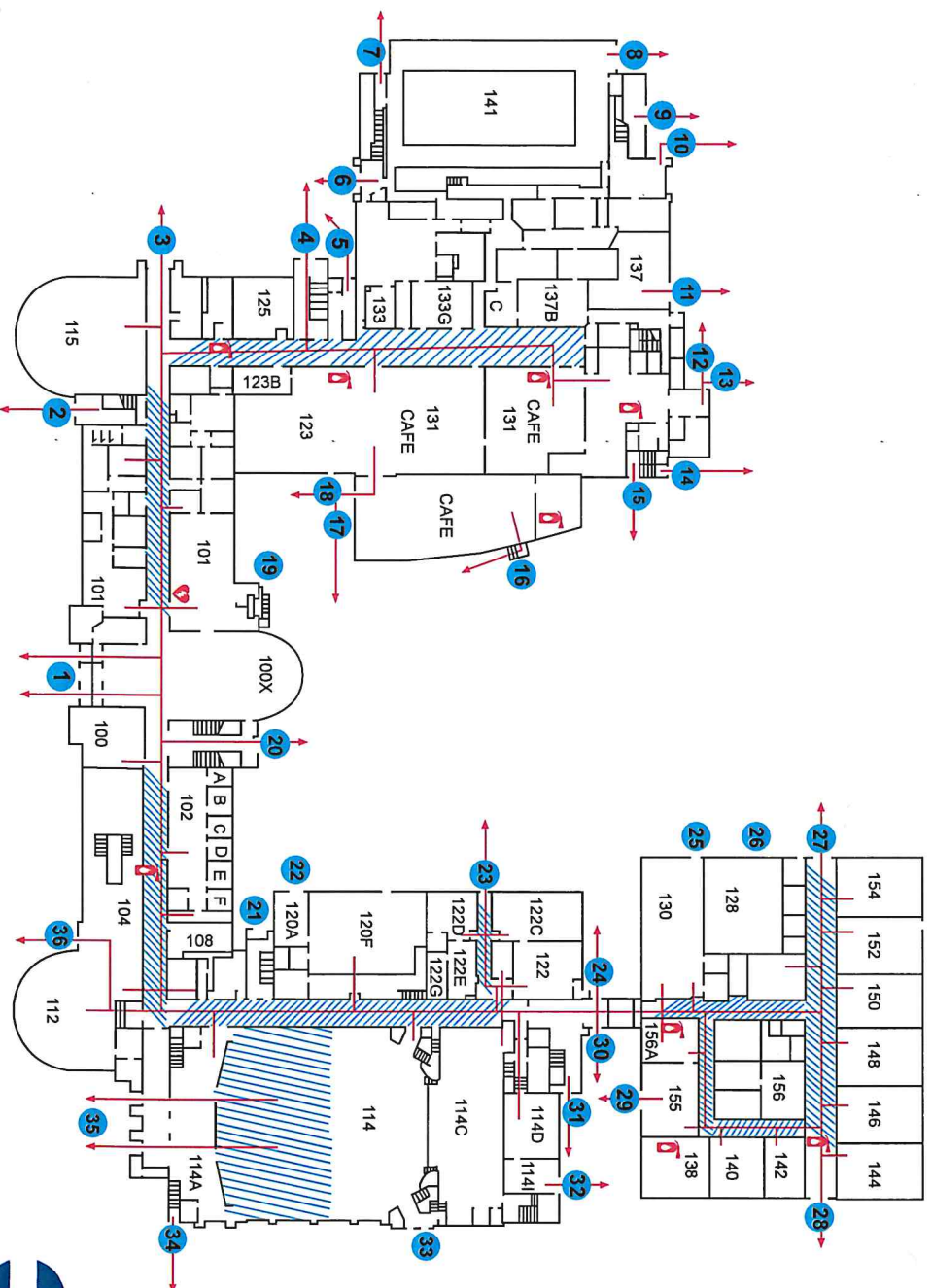
❤️ Automated External Defibrillator (AED)



We are dedicated to the safety of our students and staff.

FIRE AND TORNADO SAFETY MAP

Sexton High School
102 Mcpherson Ave., Lansing, MI



In case of emergency call 911.

LEGEND

You Are Here



Exit



Tornado Shelter



Fire Escape Route



Fire Extinguisher



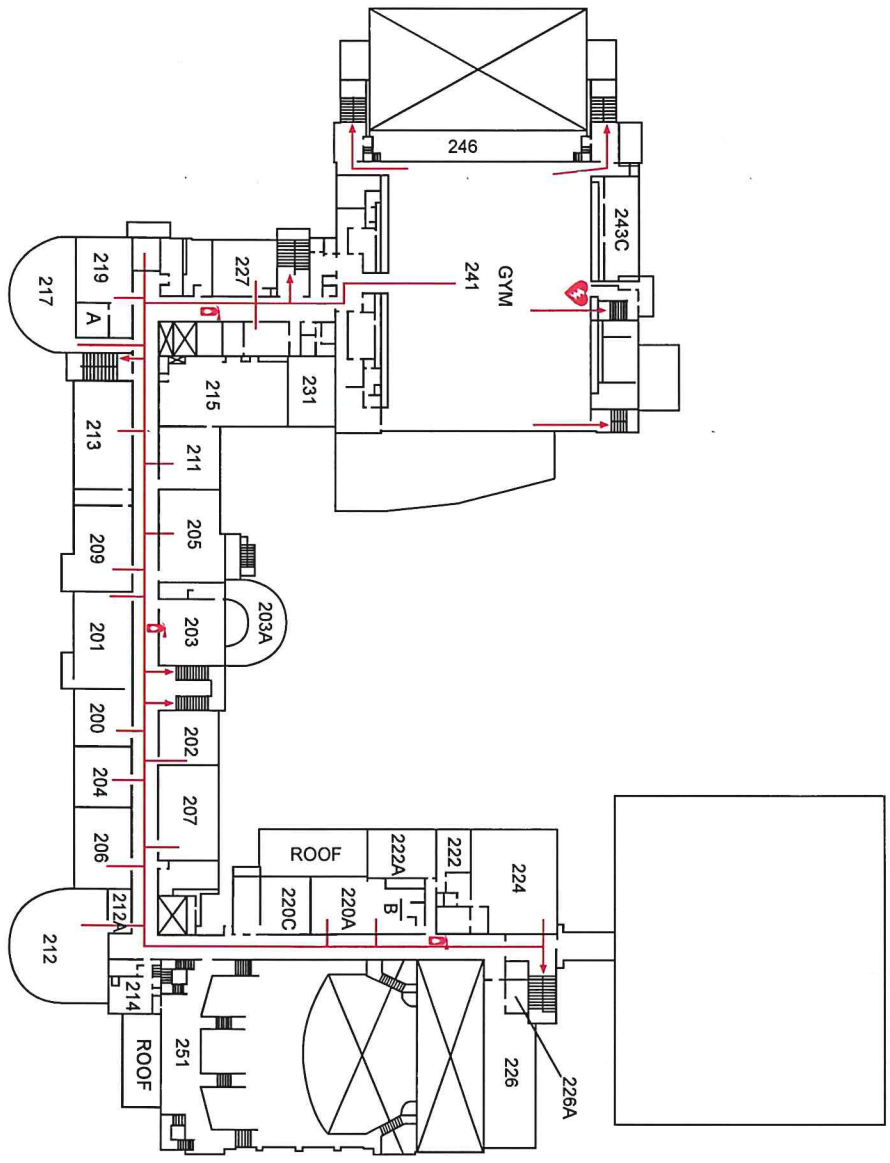
Automated External
Defibrillator (AED)



We are dedicated to the safety of our students and staff.

FIRE AND TORNADO SAFETY MAP

Sexton High School
102 McPherson Ave., Lansing, MI



In case of emergency call 911.

LEGEND

You Are Here

● Exit

▨ Tornado Shelter

➔ Fire Escape Route

🔥 Fire Extinguisher

⚡ Automated External Defibrillator (AED)

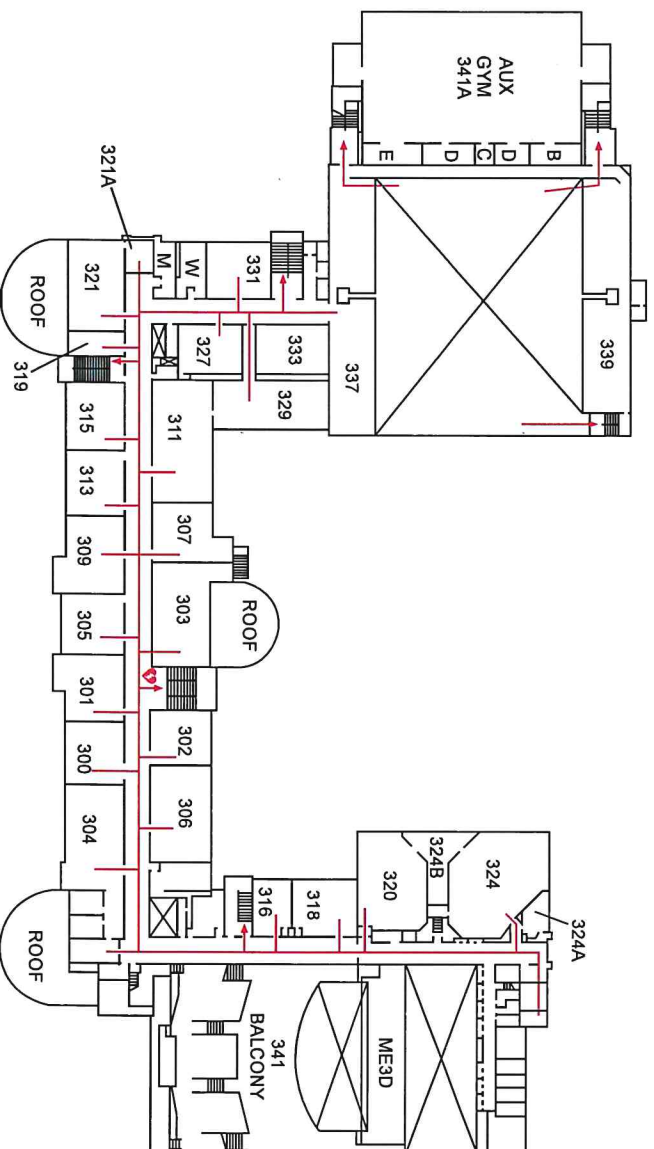


We are dedicated to the safety of our students and staff.

FIRE AND TORNADO SAFETY MAP

Sexton High School
102 Mcpherson Ave., Lansing, MI

In case of emergency call 911.



LEGEND

You Are Here

● Exit

▨ Tornado Shelter

➔ Fire Escape Route

🧯 Fire Extinguisher

⚡ Automated External Defibrillator (AED)

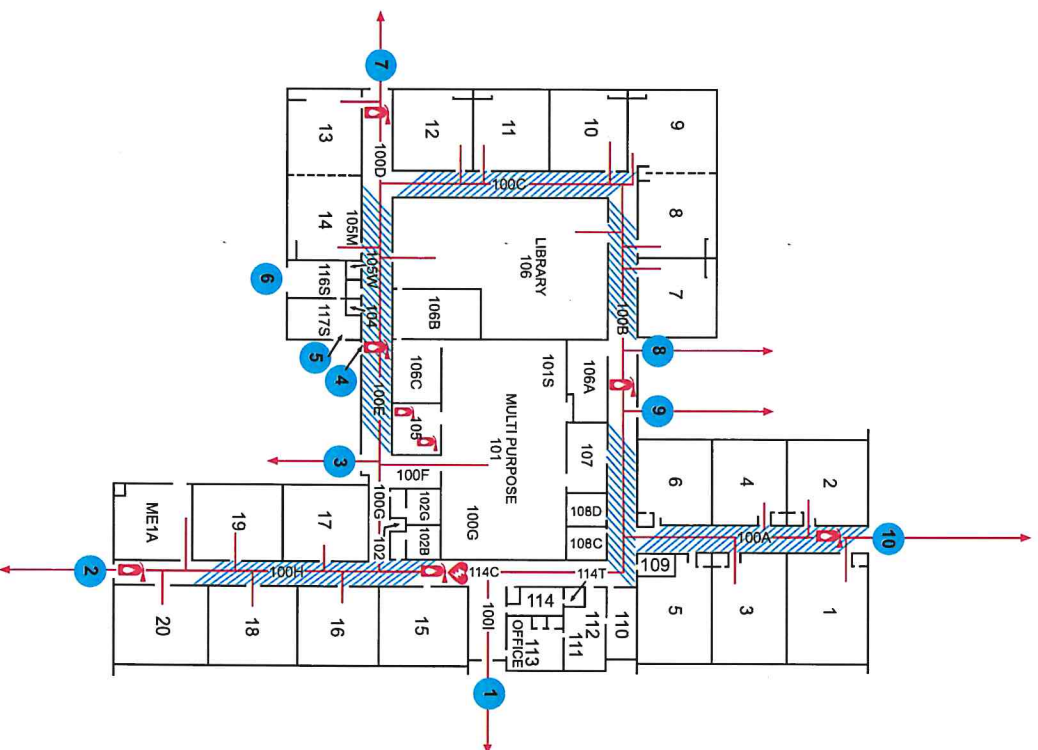


We are dedicated to the safety of our students and staff.

FIRE AND TORNADO SAFETY MAP

Sheridan STEM School
16900 N. Cedar Street, Lansing, MI

In case of emergency call 911.



LEGEND

You Are Here

● Exit

▨ Tornado Shelter

→ Fire Escape Route

🧯 Fire Extinguisher

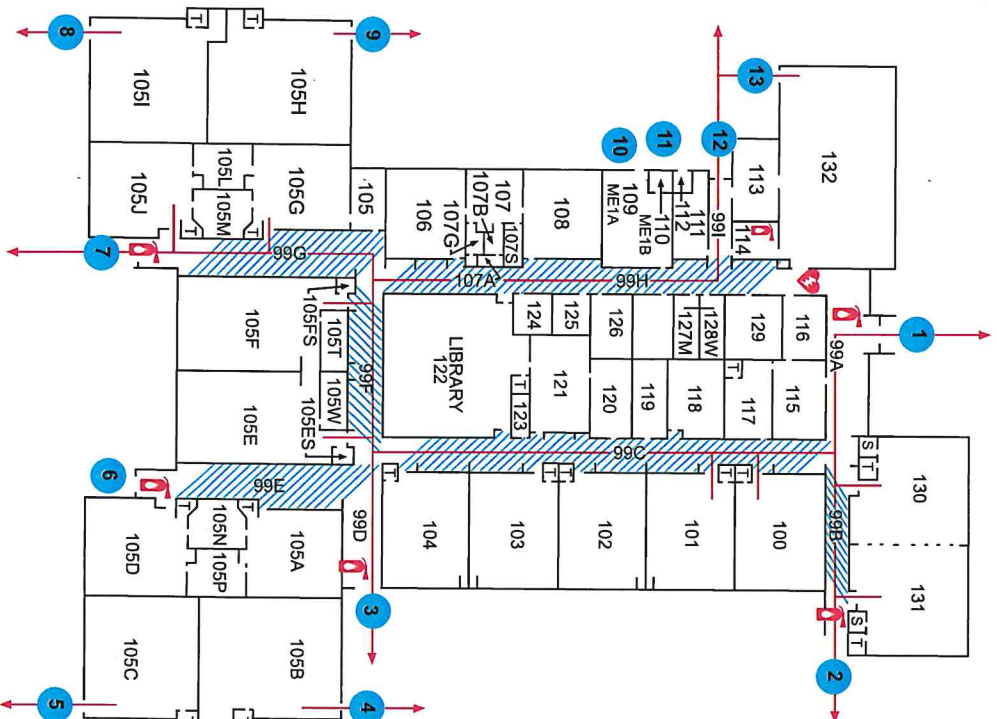
💓 Automated External
Defibrillator (AED)



We are dedicated to the safety of our students and staff.

FIRE AND TORNADO SAFETY MAP

Wexford Academy
5217 Wexford Rd., Lansing, MI



We are dedicated to the safety of our students and staff.

In case of emergency call 911.

LEGEND

You Are Here



Exit



Tornado Shelter



Fire Escape Route



Fire Extinguisher



Automated External Defibrillator (AED)