

LSD Ebersole Center Food Service Bid Pack 2, Addendum No. 1

Narrative of Changes

Project Name:	Ebersole Center Food Service – Equipment Replacement & Renovations SO-1853	Date:	April 3, 2026
Project Location:	3400 2 nd St Wayland, MI 49348	Architect's Project #:	26000750A
Owner/Client:	Lansing School District	Attention:	David Beckering
Issued to:	Beckering Construction	Email:	djb@beckering.com
City/State:	Grand Rapids, MI	Zip:	49548

Delivered via:

- Messenger Hand-carried **Address Sent to:** Newforma
 Express Pick-up Email
 Mail UPS FTP

This Addendum revises the Contract Documents and shall have the same force and effect; make the following changes to the Specifications and Drawings for this project. The following is a written summary of the changes made by this Addendum. Strict attention should be given to the Drawings and Specifications for area take-off, quantities and items deleted or revised herein. This addendum forms a part of the Contract Documents.

Issued by CED by:	Courtney Norris	Date Signed:	04/03/2026
Prepared by:	Courtney Norris	Date Signed:	04/03/2026
Distribution:	Refer to Newforma transmittal.		

Below is a list of the changes made to our documents in response to the comments, RFIs, or clarifications provided prior to Bid. Please feel free to reach out with any further questions or clarifications in a timely manner.

Sincerely,
Courtney Norris

Drawings

- A101 – FIRST FLOOR AND CEILING PLANS (Reissued)
 - Added paint specifications.
 - Revised note regarding column wrap and conduit running inside of column wrap and across the floor.
 - Revised note regarding painting of trim

- E100 – DETAILS, SYMBOL LEGENDS & SPECIFICATIONS
 - Added new type b in fixture schedule
 - Added Columbia manufacturer to the schedule as approved
 - Allow watt stopper as approved equal for lighting controls

- EL101 – FIRST FLOOR PLAN – LIGHTING / PHOTOMETRICS (Reissued)
 - Changed fixtures in kitchen and serving 108 to type B

- EP101 – FIRST FLOOR PLAN – POWER (Reissued)
 - Changed keyed note 3 to utilize the column for conduit drops to serving line and provide a rubber ramp to cover surface mounted conduits along the floor.
 - Revised device layout and notations at the serving line.

ATTACHMENTS

Reissued Sheets:

A101, E100, EL101, EP101

CM Clarifications 1, 2, 3

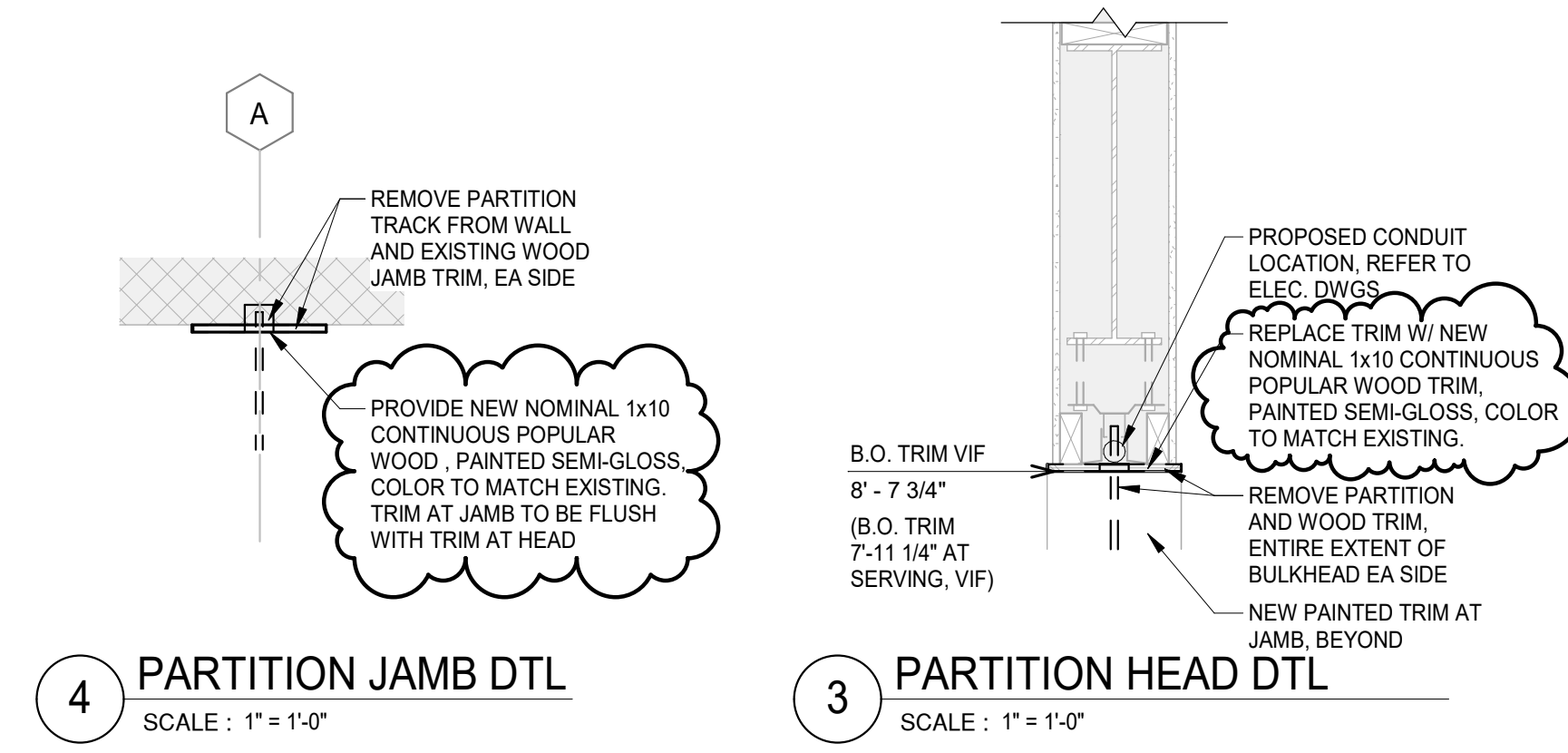
END OF ADDENDUM NO. 1

CEILING PLAN KEYNOTES (#)

- C1 EXISTING CEILING TO REMAIN. PAINT TOUCH UP AS REQUIRED FOR NEW LIGHT INSTALLATION.
- C2 EXISTING TECTUM CEILING TO REMAIN. PAINT TOUCH UP AS REQUIRED FOR NEW LIGHT INSTALLATION.
- C3 EXISTING PLASTERED CEILING TO REMAIN. PATCH AND REPAIR WATER DAMAGE AREAS AND PAINT ENTIRE CEILING.
- C4 EXISTING PLASTERED CEILING TO REMAIN. PATCH AS REQUIRED AND PAINT TOUCH UP AS REQUIRED FOR NEW LIGHT INSTALLATION.

FLOOR PLAN KEYNOTES (#)

- A1 EXISTING VCT FLOORING TO REMAIN. NO WORK ANTICIPATED.
- A2 BULKHEAD AT FOLDING PARTITIONS TO BE PAINTED BOTH SIDES IN ITS ENTIRETY. ALL OTHER WALLS TO REMAIN AS IS.
- A3 EXISTING MOSAIC FLOOR TILING TO REMAIN. PATCH AS REQUIRED FOR NEW POWER, DRAINS AND WATER LINES.
- A4 PROVIDE PAINT TOUCH UP WHERE EQUIPMENT IS BEING REMOVED.
- A5 EXISTING EXPOSED CONCRETE FLOORING TO REMAIN.



4 PARTITION JAMB DTL
SCALE: 1" = 1'-0"

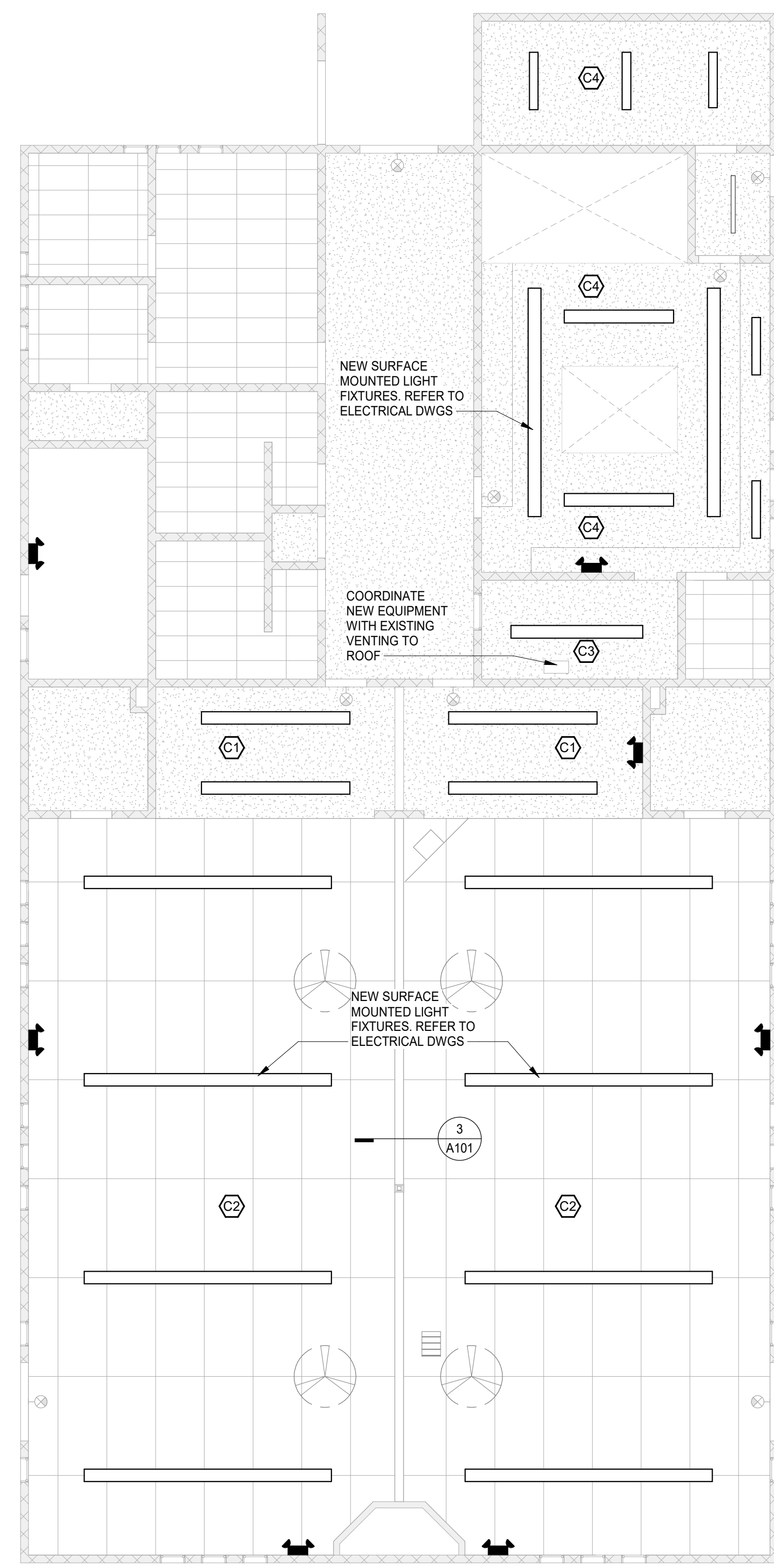
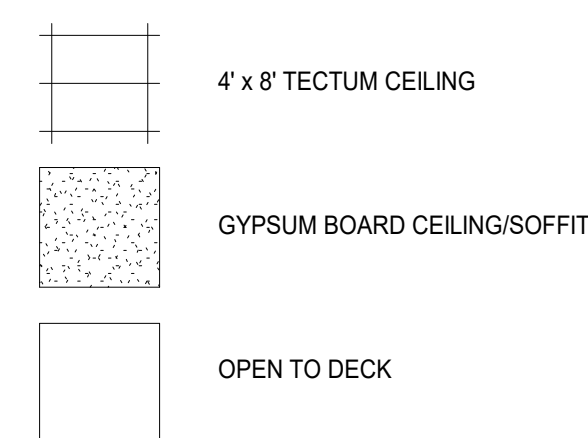
3 PARTITION HEAD DTL
SCALE: 1" = 1'-0"

SPECIFICATIONS

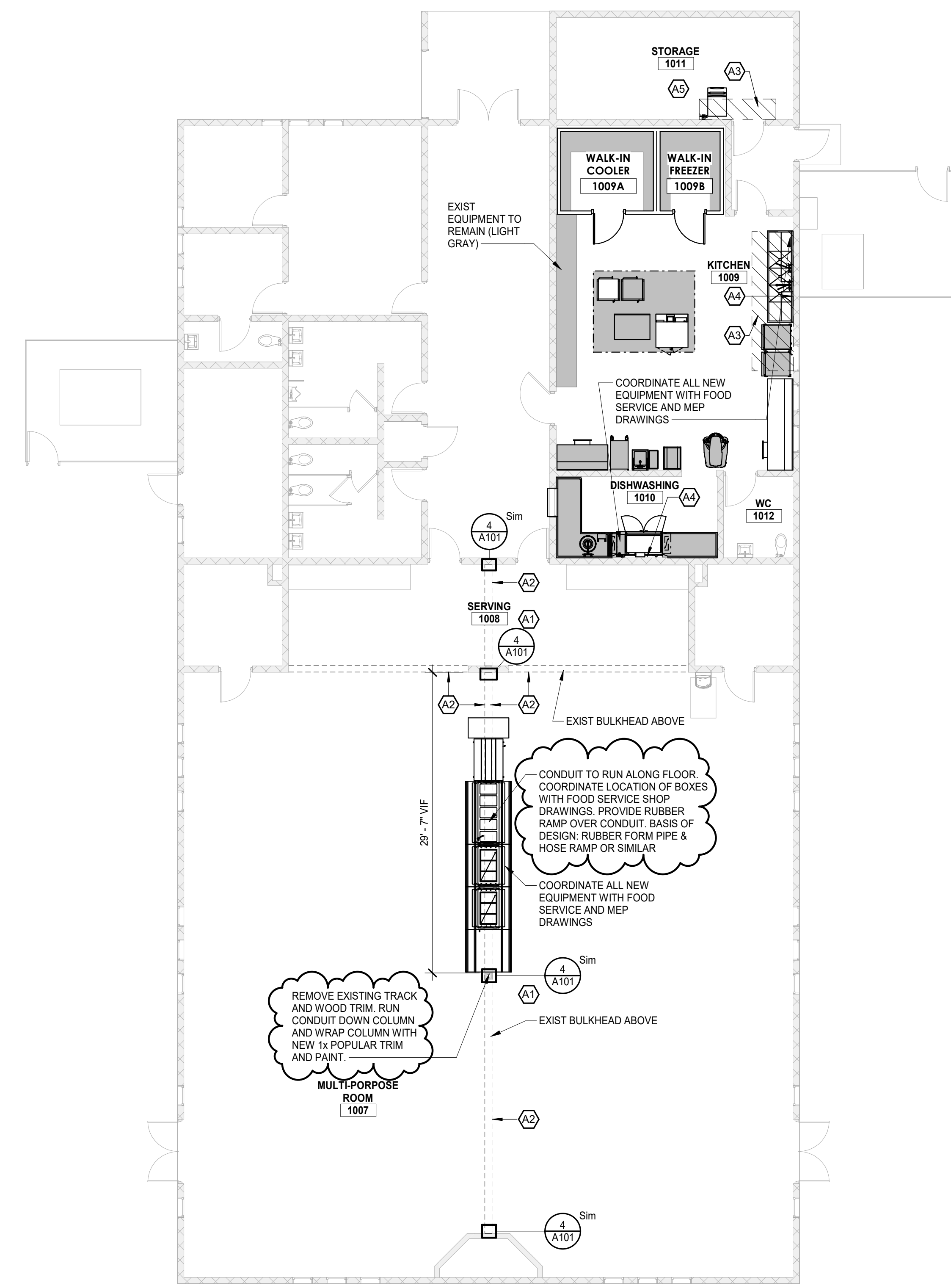
- 099123 - INTERIOR PAINTING:**
- A. BASIS OF DESIGN MANUFACTURER: SHERWIN WILLIAMS. ALSO ACCEPTABLE: BENJAMIN MOORE AND PPG PAINTS.
 - B. PREPARATION OF SURFACES TO RECEIVE PAINT: CLEAN, DRY, DULL, AND SOUND.
 - C. PAINT SYSTEMS:
 - a. GYPSUM BOARD AND PLASTER:
 - PRIMER: PROMAR 200 ZERO VOC INTERIOR LATEX PRIMER, B28W2600
 - 1. 4.0 MILS WET, 1.0 MILS DRY.
 - INTERMEDIATE COAT: MATCH TOPCOAT.
 - TOPCOAT: PROMAR 200 ZERO VOC INTERIOR LATEX EG-SHEL, B20-2600 SERIES.
 - 1. 4.0 MILS WET, 1.6 MILS DRY.
 - b. GYPSUM BOARD AND PLASTER CEILING:
 - PRIMER: LOXON CONCRETE & MASONRY PRIMER AS NEEDED ON NEW PLASTER
 - INTERMEDIATE COAT: MATCH TOPCOAT
 - TOPCOAT: PRO INDUSTRIAL WATERBORNE ACRYLIC DRY FALL, FLAT, B42-80 SERIES
 - c. CMU:
 - PRIMER: EXTREME BOND PRIMER, B51 SERIES
 - 1. 3.1 MILS WET, .9 MILS DRY.
 - ADHESION TEST: USE PRINCIPLES OF ASTM D3359 AFTER MINIMUM 7 DAY CURE TIME OF PRIMER TO ENSURE 90% OF COATING CONTINUES TO ADHERE. CONTACT COATINGS MANUFACTURER FOR ASSISTANCE AS NEEDED.
 - INTERMEDIATE COAT: MATCH TOPCOAT.
 - TOPCOAT: PRO INDUSTRIAL PRE-CAT EPOXY EG-SHEL, K45-2150 SERIES.
 - 1. 4.0 MILS WET, 1.6 MILS DRY PER COAT.
 - d. HOLLOW METAL FRAMES AND DOORS:
 - PRIMER: PRO INDUSTRIAL PRO CRYL UNIVERSAL PRIMER, B66-310 SERIES.
 - 1. 5.0 TO 10 MILS WET, 2.0 TO 4.0 MILS DRY.
 - INTERMEDIATE COAT: MATCH TOPCOAT.
 - TOPCOAT: PRO INDUSTRIAL ACRYLIC SEMI-GLOSS COAT, B66-650 SERIES.
 - 1. 2.5 TO 4.0 MILS DRY PER COAT.
 - e. WOOD:
 - PRIMER: PREMIUM WALL & WOOD PRIMER.
 - INTERMEDIATE COAT: MATCH TOPCOAT.
 - TOPCOAT: PRO INDUSTRIAL ACRYLIC SEMI-GLOSS COAT, B66-650 SERIES.
 - f. ACOUSTIC/TECTUM DECK:
 - PRO INDUSTRIAL WATERBORNE ACRYLIC DRY FALL, FLAT, B42-80 SERIES. UP TO 6 COATS, SPRAY APPLIED.
 - 1. 3.5 TO 5.0 MILS WET, 1.5 TO 2.0 MILS DRY PER COAT.
 - D. COLORS: REFER TO BASIS OF DESIGN.

CEILING LEGEND

NOTE: SEE OTHER DISCIPLINE DRAWINGS (E.G. MECHANICAL, PLUMBING AND ELECTRICAL DRAWINGS) FOR ASSOCIATED SYSTEMS AND INFORMATION ABOUT SYMBOLS NOT INDICATED IN THIS LEGEND.



2 FIRST FLOOR REFLECTED CEILING PLAN
SCALE: 1/8" = 1'-0"



1 FIRST FLOOR PLAN
SCALE: 1/8" = 1'-0"

www.colliersengineering.com
Copyright © 2024 Colliers Engineering & Design. All Rights Reserved. This drawing and all the information contained herein is authorized for use only by the party for whom the services were contracted or to whom it is certified. This drawing may not be copied, reused, disclosed, distributed or relied upon for any other purpose without the express written consent of Colliers Engineering & Design.

REV	DATE	DESCRIPTION
3	03/13/26	BID PACK 2 - BIDS & PERMITS
4	Date 4	BID PACK 2 - ADDENDUM 1

LANSING SCHOOL DISTRICT

BID PACK 2
EBERSOLE CENTER FOOD SERVICE - EQUIPMENT REPLACEMENT & RENOVATIONS SO-1853
3400 2ND STREET
WAYLAND, MI 49348

MI ARCHITECTURE
FIRM LICENSE # NLP000605

Colliers
Engineering & Design
GRAND RAPIDS
560 5th St. NW
Suite 305
Grand Rapids, MI 49504
Phone: 616.827.4270
Colliers Engineering & Design,
Architecture, Landscape Architecture,
Surveying, CT F.C.

PROJECT MANAGER: C NORRIS	DISCIPLINE LEAD: B HUYLER
DESIGNER: E POST	REVIEWER:
DATE ISSUED: 03/13/26	PROJECT NUMBER: 26000750A
SHEET NAME:	

FIRST FLOOR AND CEILING PLANS

DRAWING NUMBER:
A101

NOTE: DO NOT SCALE DRAWING FOR CONSTRUCTION.

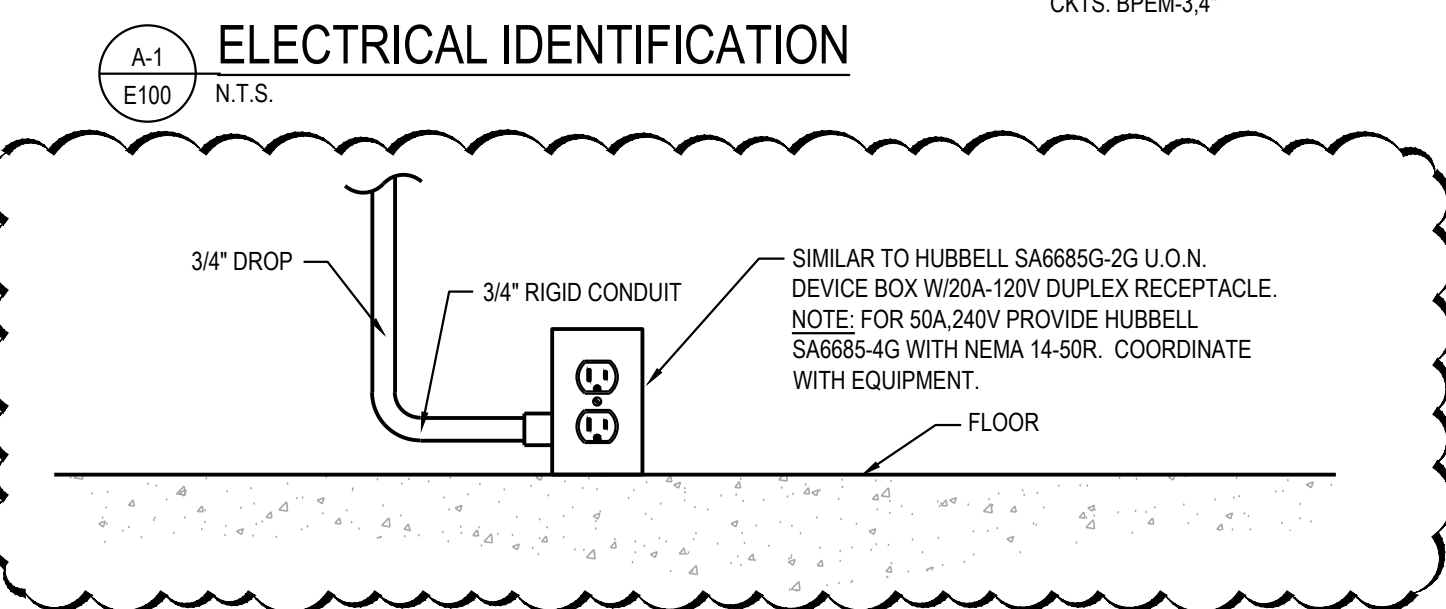
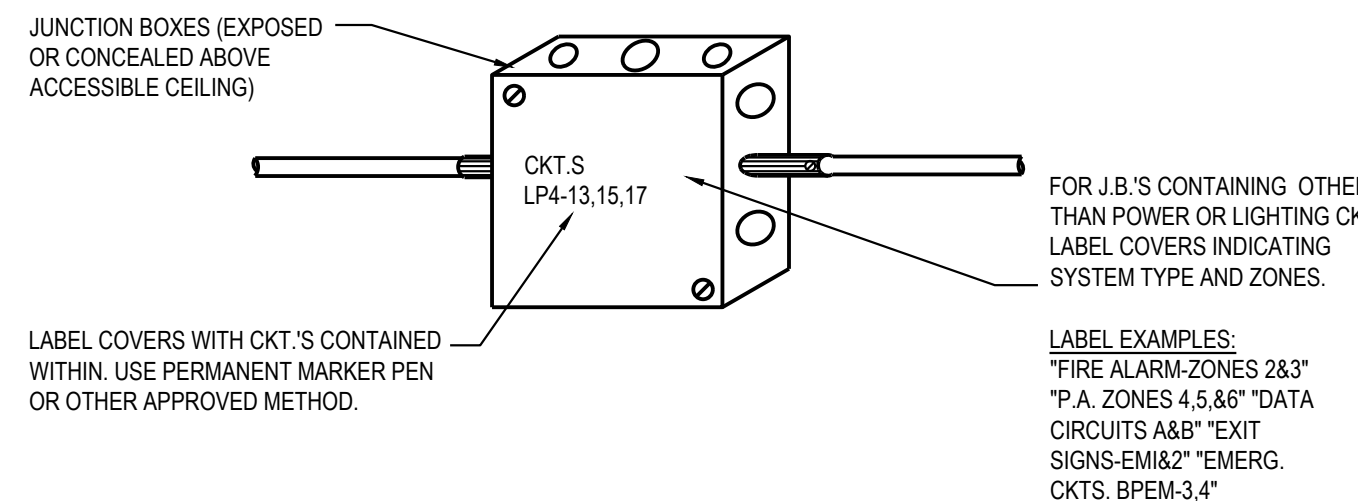
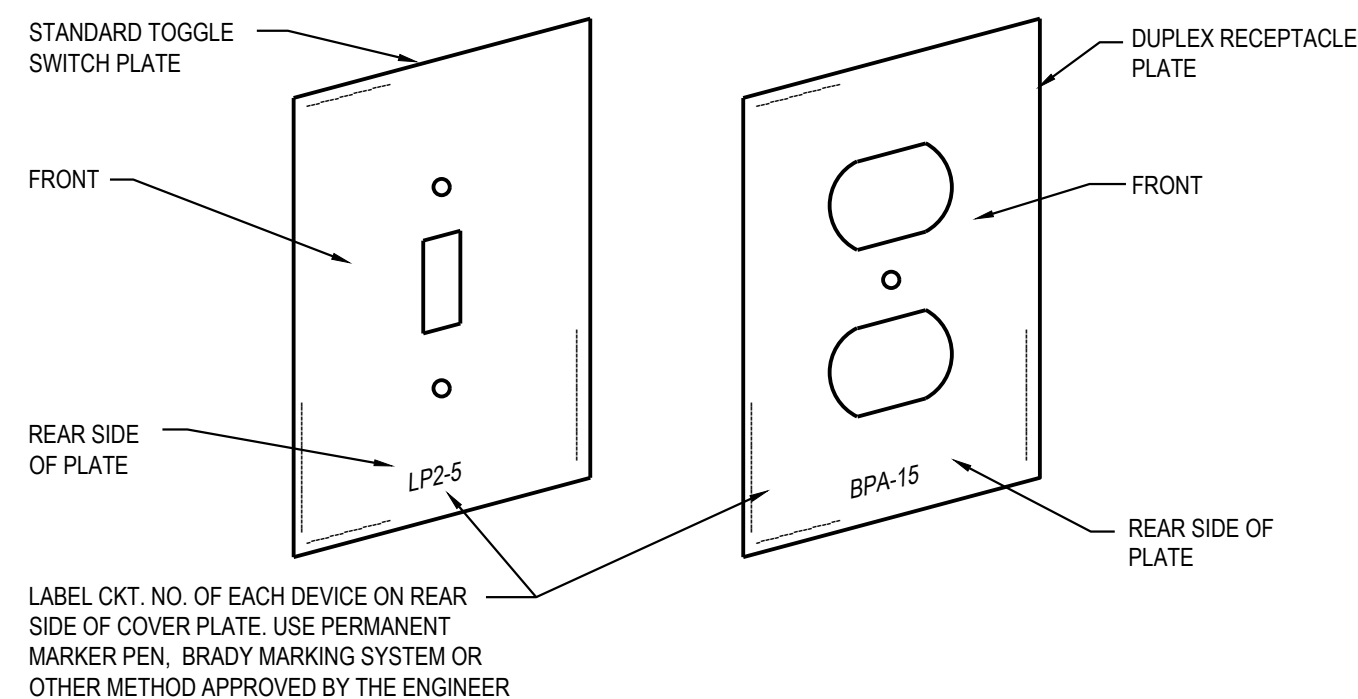
ELECTRICAL SYMBOL LEGEND		
SYMBOL	DESCRIPTION	MTG. HT. TO CL.
S S3	SINGLE POLE OR 3-WAY SWITCH-SPECIFICATION GRADE	46"
S4	FOUR WAY SWITCH-SPEC. GRADE	46"
SK	KEY OPERATED SWITCH-SPEC. GRADE	46"
SD	DIMMER SWITCH	46"
SIR	IR SWITCH	46"
SIRD	IR SWITCH DIMMABLE	46"
SP	SWITCH WITH PILOT LIGHT	46"
SM	MANUAL MOTOR STARTER SWITCH	46"
OS	OCCUPANCY SENSOR	---
PC	PHOTO CELL	---
CS	CONTROL STATION	46"
DS	DAYLIGHT SENSOR	---
PP	POWER PACK	---
C	SPLIT WIRED RECEPTACLE C-DENOTES CONTROLLED VIA RELAY OR OCC SENSOR	18"
WR	WATER RESISTANT GROUND FAULT CIRCUIT INTERRUPTER WR-DENOTES WEATHERPROOF WHILE IN USE COVER	18"
Ⓢ	DUPLEX OUTLET-SPEC. GRADE CIRCLE AROUND SYMBOL= CEILING MOUNTED	18"
Ⓢ	(2) DUPLEX OUTLET-SPEC. GRADE CIRCLE AROUND SYMBOL= CEILING MOUNTED	18"
Ⓢ	SPECIAL SINGLE RECEPTACLE	18"
Ⓢ	SPECIAL OUTLET-CHARACTERISTICS AS NOTED ON PLANS	AS NOTED
EV	E.V. CHARGER F-FUTURE	---
▽	DATA OUTLET-4" SQ. BOX W/ 1 GANG RAISED COVER 1-1/4" C. UP WALL TO CLG. SPACE CIRCLE AROUND SYMBOL= CEILING MOUNTED	18"
▽	TV OUTLET-4" SQ. BOX W/ 1 GANG RAISED COVER 1-1/4" C. UP WALL TO CLG. SPACE CIRCLE AROUND SYMBOL= CEILING MOUNTED	18"
▽	TELEPHONE OUTLET-4" SQ. BOX W/ 1 GANG RAISED COVER 1-1/4" C. UP WALL TO CLG. SPACE	18"
▽	TELEPHONE/DATA OUTLET-4" SQ. BOX W/ 1 GANG RAISED COVER 1-1/4" C. UP WALL TO CLG. SPACE	18"
△	WIRELESS ROUTER CIRCLE AROUND SYMBOL= CEILING MOUNTED	---
Ⓢ	FLOOR BOX 2 RECEPT. 2 DATA - THOMAS & BETTS-# 665-SC 1-1/4" C. TO FLOORBOX FOR DATA	---
Ⓢ	FLOOR BOX 1 RECEPT. 1 DATA - THOMAS & BETTS-# 664-SC 1-1/4" C. TO FLOORBOX FOR DATA	---
J	JUNCTION BOX - HUBBELL NSAVE2M WITH RECEPTACLE KIT HUBBELL NSOKP - PROVIDE CONNECTOR PLATE FOR AV	AS NOTED
J	JUNCTION BOX 4" SQ. BOX W/ 2 GANG RAISED COVER 1-1/4" C. UP WALL TO CLG. SPACE UNLESS OTHERWISE NOTED POWER POLE - SEE DRAWING FOR POWER - POWER/DATA SPECIFICATIONS	AS NOTED
M	ELECTRIC UTILITY METER	---
F	FUSED DISCONNECT SWITCH- FDS-HEAVY DUTY	46"
F	NON-FUSED DISCONNECT SWITCH- NFDS-HEAVY DUTY	46"
M	SW. AND PLUG FUSE HOLDER- BUSSMANN "SSU" & FUSESTAT FUSE	AT EQUIP.
M	MAGNETIC MOTOR STARTER-MS	46"
M	COMBINATION MAG. STARTER/ FUSED DISC. SWITCH - CS/FDS	46"
M	COMBINATION MAG. STARTER/NON-FUSED DISC. SWITCH - CS/NFDS	46"
VFD	VARIABLE FREQUENCY DRIVE	---
M	SINGLE PHASE ELECTRIC MOTOR	---
M	THREE PHASE ELECTRIC MOTOR	---
M	SURFACE OR FLUSH MTD. BRANCH CIRCUIT PANELBOARD	72" TO TOP
T	TRANSFORMER	---
M	PUSH BUTTON	46"
T	THERMOSTAT. E.C TO ROUGH-IN SINGLE GANG BOX AND 1/2" C. TO ACCESSIBLE CEILING SPACE.	46"
T	HUMIDISTAT. E.C TO ROUGH-IN SINGLE GANG BOX AND 1/2" C. TO ACCESSIBLE CEILING SPACE.	46"
⊗	RECESSED DOWNLIGHT LUMINAIRE	---
⊗	RECESSED WALLWASH LUMINAIRE	---
○	SURFACE LUMINAIRE	---
○	PENDANT LUMINAIRE	---
○	WALL MOUNTED LUMINAIRE	---
○	SITE LIGHTING LUMINAIRE	---
○	NIGHT LIGHT	---
—	STRIP LUMINAIRE	---
—	LED ACCENT/UNDER CABINET LUMINAIRE	---
⊗	RECESSED LUMINAIRE 2x4' OR 2x2'	---
⊗	SURFACE LUMINAIRE 2x4' OR 2x2'	---
—	TRACK LIGHTING LUMINAIRE	---
—	PARTIALLY SHADED LUMINAIRE OR WITH "E" SUFFIX ARE EMERGENCY	---
—	EXIT SIGN - WALL MOUNTED OR CEILING MOUNTED ARROWS INDICATE PATH OF EGRESS	---
—	REMOTE EMERGENCY HEAD	---
—	BATTERY EMERGENCY LUMINAIRE	---

SYSTEMS SYMBOL LEGEND		
SYMBOL	DESCRIPTION	MTG. HT. TO CL.
F	FIRE ALARM PULL STATION	46"
WP	FIRE ALARM HORN-STROBE LIGHT (WP-DENOTES WEATHER PROOF)	80"
Ⓢ	AREA SMOKE DETECTOR-PHOTOELECTRIC	---
Ⓢ	VISUAL ONLY ALARM	80"
Ⓢ	AUDIO ONLY ALARM	---
Ⓢ	CEILING SPEAKER	---
Ⓢ	SPEAKER-STROBE LIGHT	---
CO	SMOKE/HORN BASE CO-DENOTES COMBO CARBON MONOXIDE/SMOKE	---
DH	MAGNETIC DOOR HOLD OPEN	---
CO	CARBON MONOXIDE SENSOR. E.C TO ROUGH-IN SINGLE GANG BOX AND 1/2" C. TO ACCESSIBLE CEILING SPACE.	---
D	DUCT SMOKE DETECTOR	---
H	HEAT DETECTOR	---
TS	O.S.&Y TAMPER SWITCH	---
FS	WATER FLOW SWITCH	---
RT	REMOTE ALARM KEY TEST SWITCH	46"
CR	FIRE ALARM CONTROL RELAY	---
BD	BEAM DETECTOR	---
FSD	FIRE/SMOKE DAMPER	---
FACP	FIRE ALARM CONTROL PANEL	---
FAA	FIRE ALARM ANNUCIATOR PANEL	---
Ⓢ	CEILING SPEAKER	---
Ⓢ	CARD READER	46"
Ⓢ	SECURITY DOOR CONTACT	AT DOOR HEAD
Ⓢ	SECURITY INTERCOM	46"
Ⓢ	SECURITY CAMERA - "W" DENOTES WALL MOUNTED CHEVRON INDICATES AIM LINE	TYPICALLY CLG MOUNTED
Ⓢ	SECURITY DOOR REQUEST TO EXIT	AT DOOR HEAD

F.A. NOTES:
1. MATCH EXISTING SYSTEM.

LIGHT FIXTURE LEGEND							
FIXTURE TYPE	DESCRIPTION	MANU.	CATALOG PART#	VOLTAGE	LAMPS	Wattage	REMARKS
A	1x4 LED WRAP AROUND	ACUITY	TRUM 48 AL06 CMP 85WV2 ZT MVOLT	120	LED 3000k	53W	1,2
B	1x4 LED WRAP AROUND	ACUITY	FMWL 48 840	120	LED 3000k	33W	1,2
C	4" INDUSTRIAL STRIP LED	ACUITY	CSS L48 AL03 UVOLT 8WV3 80CRI	120	LED 3000K	222/937	1,2
D	REPLACEMENT LIGHT FOR HOOD JELLY JAR/VAPOR TIGHT	KILLARK	VTR-1	120	LED 3000K		1,2
E1	EXIT LIGHT	LITHONIA	LHQM LED	120	LED	1.5W	1,2
EM1	BATTERY BACK UP	LITHONIA	ELM4L	120	LED	2.5W	1,2

GENERAL LIGHT FIXTURE SCHEDULE NOTES. OR OWNER APPROVED EQUALS
1. ALL FIXTURE TO BE DAMP LOCATION RATED.
2. MANUFACTURERS ALLOWED ARE COOPER AND COLUMBIA



SYMBOL NOTES:
1. "AC" DENOTES ABOVE COUNTER. COORDINATE HEIGHT WITH ARCHITECT.
2. "H" DENOTES HORIZONTAL MOUNTING OF DEVICE.
3. "B" DENOTES MOUNTED IN BASE.
4. "F" DENOTES MOUNTED IN FACE OF CABINETS.

ELECTRICAL SPECIFICATIONS

26-0500 GENERAL PROVISIONS

- FURNISH AND INSTALL FIRST-CLASS WORKING SYSTEMS, TESTED AND READY FOR OPERATION. COMPLETE WITH LABOR AND MATERIALS (U.L. APPROVED COMMERCIAL GRADE). CONFORM TO DRAWINGS, SPECIFICATIONS AND OTHER CONTRACT DOCUMENTS. USE PROPER NEMA RATED EQUIPMENT (i.e. "3R" WEATHERPROOF, "1" GENERAL DUTY, ETC.)
- COORDINATE WITH THE DRAWINGS AND SPECIFICATIONS OF THE OTHER TRADES AND WITH THE OWNER.
- FIELD VERIFICATION OF ALL DIMENSIONS ARE REQUIRED, EXACT LOCATIONS, DISTANCES, AND LEVELS WILL BE GOVERNED BY ACTUAL FIELD CONDITIONS.
- COMPLY WITH THE 2023 NATIONAL ELECTRICAL CODE, PLUS LOCAL OR STATE CODES, LAWS, ORDINANCES, RULES AND REGULATIONS APPLICABLE TO THE PARTICULAR CLASS OF WORK; ANY FEES IN CONNECTION THEREWITH ARE TO BE PAID BY ELECTRICAL CONTRACTOR.
- COMPLETE REQUIRED DEMOLITION, MAINTAINING OPERATION OF EXISTING TO REMAIN (COORDINATE WITH GC REGARDING ANY PHASING OF THE PROJECT) REWIRE EXISTING CIRCUITS IF REQUIRED.
- PROVIDE SUBMITTALS FOR THE FOLLOWING EQUIPMENT: SWITCHGEAR, LIGHTING, LIGHTING CONTROLS, FIRE ALARM AND OTHER REQUIRED MATERIALS AS REQUIRED PER PROJECT.
- WORK SHALL BE GUARANTEED FOR A PERIOD OF ONE YEAR FROM DATE OF FINAL ACCEPTANCE.

TESTING

- WORK REQUIRED UNDER THIS HEADING SHALL BE BY THE ELECTRICAL CONTRACTOR (OR AS NOTED) AND INCLUDES ALL SUPERVISION, LABOR, MATERIALS, INSTRUMENTATION AND EQUIPMENT NECESSARY TO EFFECTIVELY TEST, MEASURE AND VERIFY THE PERFORMANCE OF THE ELECTRICAL EQUIPMENT SYSTEMS.

26-0 529, 26-0533, 260534 RACEWAY, BOXES, AND FITTINGS

- ALL WIRING SHALL BE RUN IN CONCEALED EMT (THINWALL) CONDUIT IN THE FINISHED AREAS OF THE BUILDING. CONDUIT MAY BE EXPOSED IN EQUIPMENT ROOMS OR OVERHEAD IN ROOMS WITHOUT CEILINGS. CONDUITS EXPOSED TO WEATHER TO BE RIGID (RIGID GALVANIZED CONDUIT) MC CABLE ALLOWED IN AREAS ALLOWED PER NATIONAL ELECTRICAL CODE AND NOT SUBJECT TO DAMAGE.
- HORIZONTAL AND VERTICAL CONDUIT RUNS MAY BE SUPPORTED BY ONE-HOLE MALLEABLE STRAPS, CLAMP-BACKS OR OTHER APPROVED DEVICES.
- CONDUITS SHALL NOT BE RUN IN NOR SUPPORTED FROM DUCTWORK.

26-0219 CONDUCTORS

- ALL CONDUCTORS SHALL BE NEW. ALL CONDUCTORS FOR POWER AND LIGHTING SYSTEMS WIRING SHALL BE 98% CONDUCTIVITY COPPER TYPE THHN OR THW. ALUMINUM IS TO BE PERMITTED FOR SERVICE ENTRANCE AND PANEL FEEDS. BRANCH CIRCUIT WIRING SHALL BE COPPER.

26-2736 WIRING DEVICES

- CONVENIENCE OUTLETS SHALL BE SPECIFICATION GRADE, RATED AT 20 AMPERE, GROUNDING TYPE, 125 VOLT, AND BEAR U.L. LABEL OF APPROVAL. STAINLESS STEEL COVER PLATES, MANUFACTURERS: PASS AND SEYMOUR CATALOG 5251-1, OR EQUAL BY HUBBELL, AND LEVITON.
- ALL SWITCHES FOR LIGHTING SHALL BE SPECIFICATION GRADE RATED AT 20 AMPERE, 120/277 VOLTS. PASS AND SEYMOUR CATALOG 20AC-1 OR EQUAL BY HUBBELL, AND LEVITON.

16350 GROUNDING

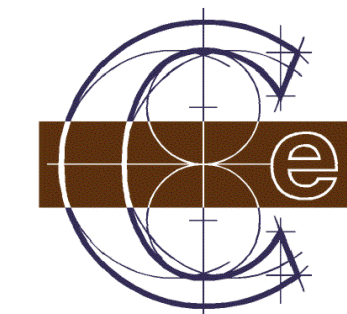
- INSTALL COMPLETE GROUNDING SYSTEM IN ACCORDANCE WITH NATIONAL ELECTRICAL CODE.
- INSTALL BONDING WIRE IN NONMETALLIC AND FLEXIBLE CONDUIT CONNECTED AT SOURCE END TO PANELBOARD EQUIPMENT GROUND BAR AND AT LOAD END TO ENCLOSURE.
- EXTEND COMPLETE BUILDING GROUNDING SYSTEM IN ACCORDANCE WITH THE NATIONAL ELECTRICAL CODE. INCLUDE INSULATED GROUND FOR ALL EXTERIOR AS WELL AS TOILET CIRCUITS.

26-5113 LIGHTING

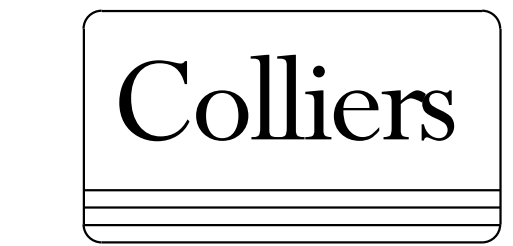
- THE ELECTRICAL CONTRACTOR SHALL FURNISH AND/OR INSTALL ALL FIXTURES WITH LAMPS, AS SHOWN ON THE DRAWINGS AND AS LISTED IN THE FIXTURE LEGEND. THE ELECTRICAL CONTRACTOR IS RESPONSIBLE FOR INSTALLING ADEQUATE SUPPORTING FACILITIES FOR THE LIGHTING SYSTEM.
- WHERE RECESSED FIXTURES ARE INSTALLED IN CEILINGS FINISHED IN ACOUSTICAL TILE PATTERNS OR LAYOUTS, THE ELECTRICAL CONTRACTOR SHALL WORK IN COOPERATION WITH THE CEILING SUPPLIERS IN LOCATING AND FRAMING FIXTURES.
- EXIT LIGHT FIXTURES SHALL BE SUITABLE FOR WALL, CEILING FOR PENDANT MOUNTING AS INDICATED, WITH STENCIL FACES AND ONE-EIGHTH INCH THICK RED (OR GREEN PER ARCHITECT OR OWNER) ACRYLIC PANELS, WITH LED LAMPS AND BATTERY PACKS SHOWN IN THE LIGHTING FIXTURE LEGEND.
- EMERGENCY LIGHTING REQUIREMENTS SHALL BE INSTALLED TO SATISFY THE RESPECTIVE CODES, INCLUDING INTERNATIONAL BUILDING CODE (i.e. 1FC AVERAGE, .6 FC MINIMUM AND 40:1 RATIO OF MAX TO MIN). PHOTOMETRICS, NOT PROVIDED ON THE BID DOCUMENTS SHALL BE THE RESPONSIBILITY OF THE ELECTRICAL CONTRACTOR AND SHALL BE INCLUDED IN THE FINAL BID PROPOSAL - BY EC, SUPPLIER OR ENGINEER.

26-2816 CONTROLS

- COMPLETE CONTROLS FOR LIGHTING AND MECHANICAL EQUIPMENT, AS NOTED ON THE DRAWINGS. ALL LIGHTING CONTROLS SHALL COMPLY WITH 2021 MICHIGAN ENERGY CODE.
- APPROVED MANUFACTURERS: ACUITY, COOPER, HUBBELL, WATT STOPPER AND LEVITON.



Classic Engineering, LLC
100 Cesar E Chavez Ave SW
Grand Rapids, Michigan 49503
(616) 742-2810
www.classicengineering.com
Project # 2026021



Engineering & Design

www.colliersengineering.com
Copyright © 2024, Colliers Engineering & Design All Rights Reserved. This drawing and all the information contained herein is authorized for use only by the party for whom the services were contracted or to whom it is certified. This drawing may not be copied, reused, disclosed, distributed or relied upon for any other purpose without the express written consent of Colliers Engineering & Design.

REV	DATE	DESCRIPTION
1	03/16/26	BID PACK 2 - BIDS & PERMITS
2	03/XX/26	BULLETIN #1
3	04/03/26	BID PACK 2 - ADDENDUM 1

LANSING SCHOOL DISTRICT

BID PACK 2

EBERSOLE CENTER FOOD SERVICE - EQUIPMENT REPLACEMENT & RENOVATIONS SO-1853

3400 2ND STREET
WAYLAND, MI 49348

M ARCHITECTURE
FIRM LICENSE # NL P000605

Colliers Engineering & Design
GRAND RAPIDS
560 5th St. NW
Suite 305
Grand Rapids, MI 49504
Phone: 616.827.4270
Colliers Engineering & Design,
Architects, Landscape Architects,
Surveying, CT, P.E.

PROJECT MANAGER: DISCIPLINE LEAD:

DESIGNER: REVIEWER:

DATE ISSUED: PROJECT NUMBER:
03/16/2026 26000750A

SHEET NAME:

DETAILS, SYMBOL LEGENDS & SPECIFICATIONS

DRAWING NUMBER:

E100

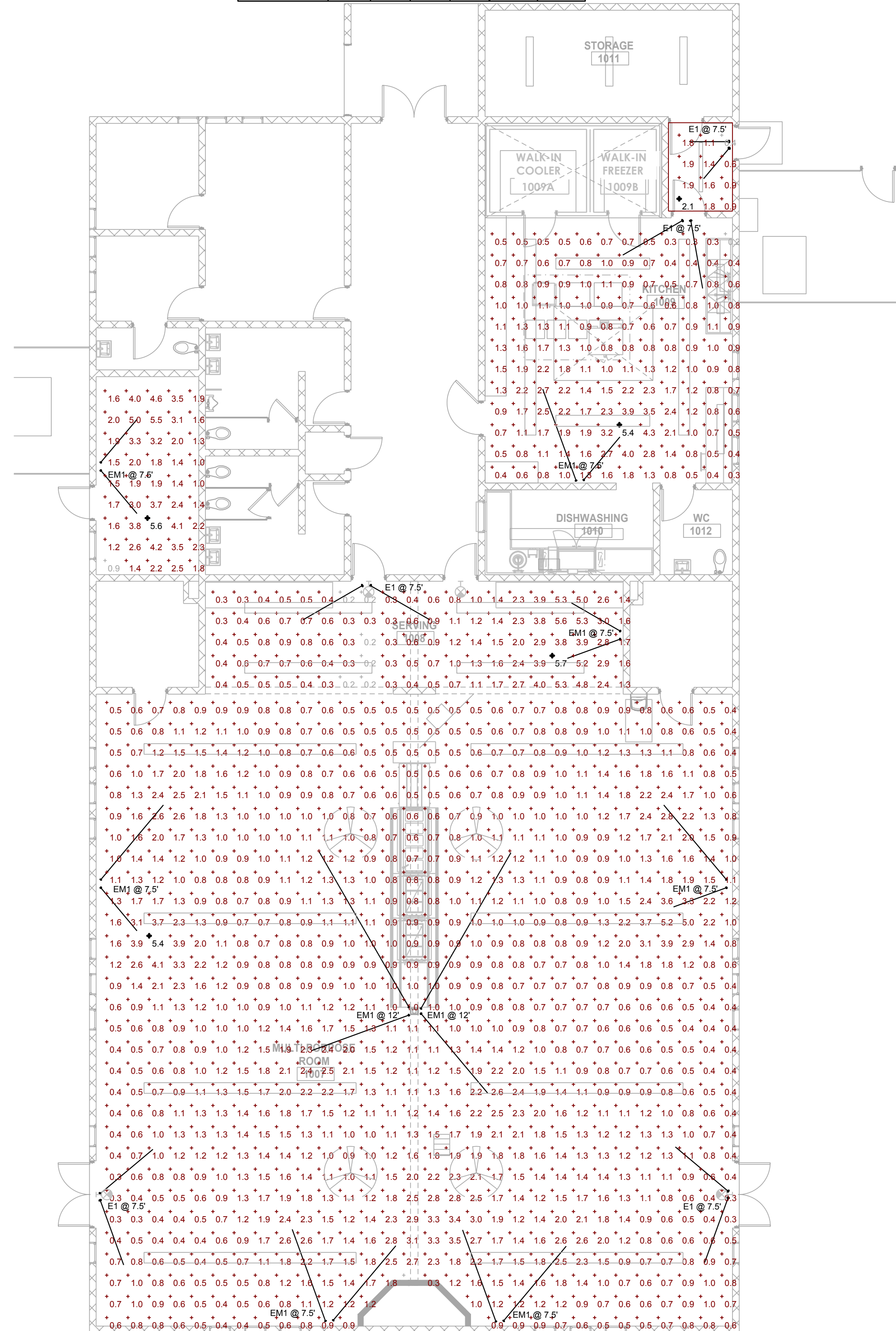
NOTE: DO NOT SCALE DRAWING FOR CONSTRUCTION.

1/19/2026 4:56:57 PM

P:\2026\2026021 LSD Ebersole Cafeteria\Working Drawings\2026021 E2.dwg, 4/3/2026 9:18:54 AM, mds@ora

Symbol	Label	Image	QTY	Manufacturer	Catalog	Description	Number Lamps	Lamp Output	LLF	Input Power	Polar Plot
○	E1		5	Lithonia Lighting	LHQM LED	QUANTUM LED EMERGENCY COMBO (ONE HEAD ONLY)	1	Absolute	1	1.5	
○	EM1		9	Lithonia Lighting	ELM4L	ELM4L SP640L	1	345	1	2.5	

Statistics						
Description	Symbol	Avg	Max	Min	Max/Min	Avg/Min
MECH 12	+	2.5 fc	5.6 fc	0.9 fc	6.2:1	2.8:1
MULTI-PURPOSE 8	+	1.2 fc	5.4 fc	0.2 fc	27.0:1	6.0:1
SERVING	+	1.5 fc	5.7 fc	0.2 fc	28.5:1	7.5:1
VESTIBULE 3	+	1.4 fc	2.1 fc	0.4 fc	5.3:1	3.5:1
KITCHEN 3	+	1.2 fc	5.4 fc	0.2 fc	27.0:1	6.0:1



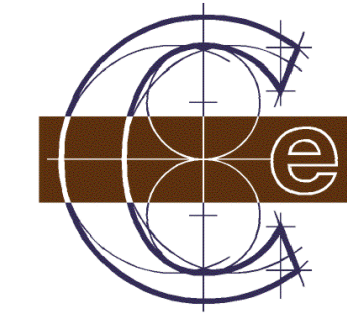
FLOOR PLAN - PHOTOMETRICS
SCALE: 1/8" = 1'-0"

LIGHTING KEY NOTES:

- ◇ NO WORK IN THIS AREA.
- ◇ REPLACE EXISTING LIGHTS ONE-FOR-ONE WITH NEW LED FIXTURES, REFER TO FIXTURE SCHEDULE ON SHEET E100.
- ◇ EXISTING PADDLE FANS AND CONTROL TO REMAIN.
- ◇ REUSE EXISTING SWITCHES FOR NEW LIGHTS UNLESS SHOWN TO BE CONTROLLED WITH OCCUPANCY SENSOR.
- ◇ REPLACE EXISTING LIGHTS UNDER HOOD ONE FOR ONE. FIELD VERIFY EXACT SIZE AND COUNTS OF FIXTURES.

GENERAL LIGHTING NOTES:

1. CONNECT EMERGENCY LIGHTING TO CIRCUIT FEEDING GENERAL LIGHTING IN THAT AREA.
2. EXIT SIGNS TO BE CONNECTED TO UNSWITCHED LIGHTING CIRCUIT OR EMERGENCY LIGHTING CIRCUIT FEEDING THAT AREA.
3. LIGHTING CONTROL SHALL COMPLY WITH 2021 MICHIGAN ENERGY CODE WHERE APPLICABLE.
4. ALL LIGHTING CIRCUITS WITHIN DWELLINGS TO BE PROTECTED WITH AFCI CIRCUIT BREAKERS.



Classic Engineering, LLC
100 Cesar E Chavez Ave SW
Grand Rapids, Michigan 49503
(616) 742-2810
www.classicengineering.com
Project # 2026021

Colliers

Engineering & Design

www.colliersengineering.com
Copyright © 2024, Colliers Engineering & Design All Rights Reserved. This drawing and all the information contained herein is authorized for use only by the party for whom the services were contracted or to whom it is certified. This drawing may not be copied, reused, disclosed, distributed or relied upon for any other purpose without the express written consent of Colliers Engineering & Design.

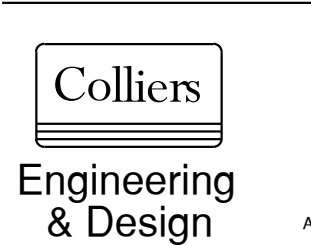
REV	DATE	DESCRIPTION
1	03/16/26	BID PACK 2 - BIDS & PERMITS
2	03/XX/26	BULLETIN #1
3	04/03/26	BID PACK 2 - ADDENDUM 1

LANSING SCHOOL DISTRICT

BID PACK 2

EBERSOLE CENTER FOOD SERVICE - EQUIPMENT REPLACEMENT & RENOVATIONS SO-1853
3400 2ND STREET
WAYLAND, MI 49348

MI ARCHITECTURE
FIRM LICENSE # NL000605



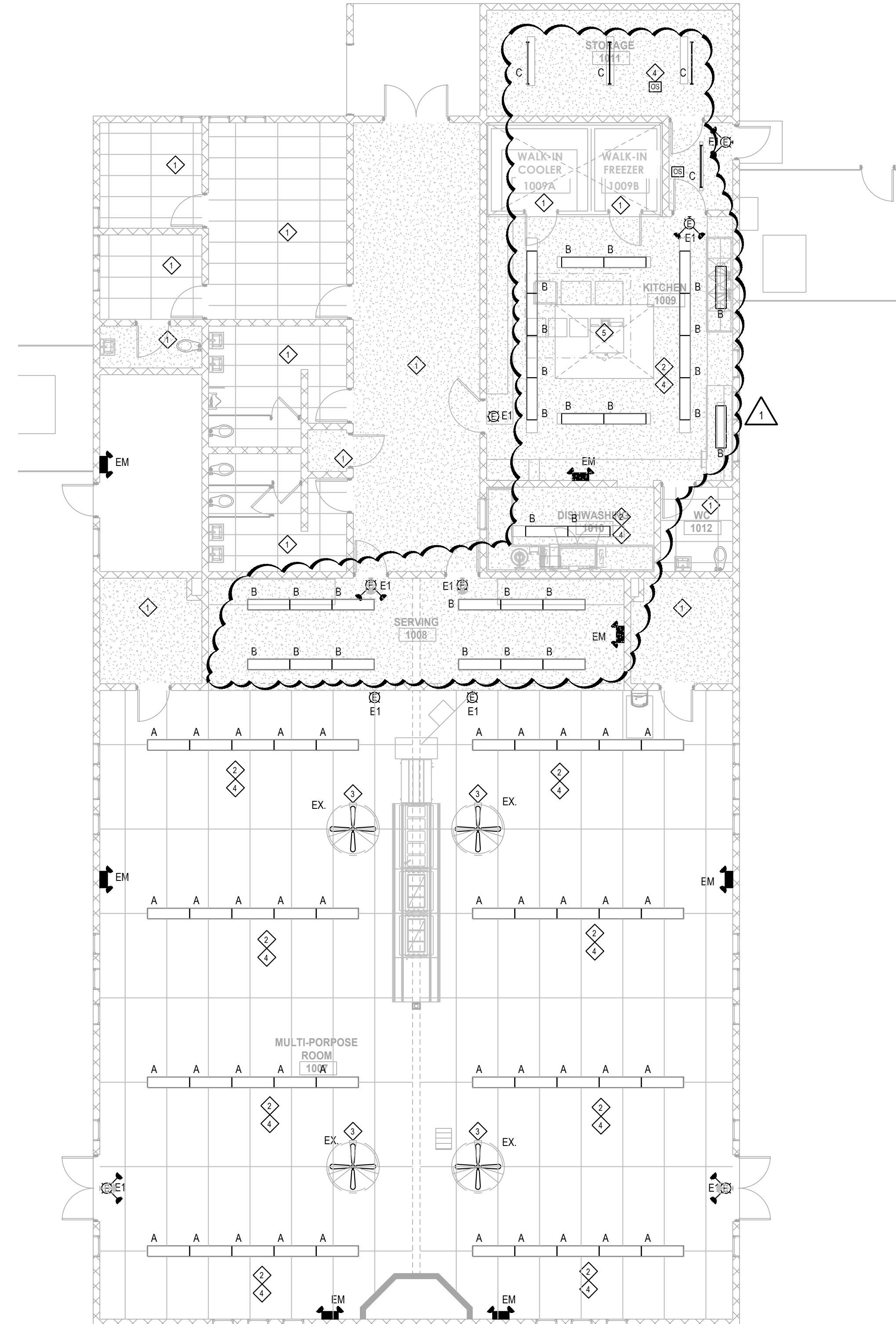
GRAND RAPIDS
560 5th St. NW
Suite 305
Grand Rapids, MI 49504
Phone: 616.827.4270
Colliers Engineering & Design,
Architecture, Landscape Architecture,
Surveying, CT P.C.

PROJECT MANAGER: L. WOOD
DISCIPLINE LEAD: C. LADEWIG
DESIGNER: C. LADEWIG
REVIEWER:
DATE ISSUED: 03/16/2026
PROJECT NUMBER: 26000750A

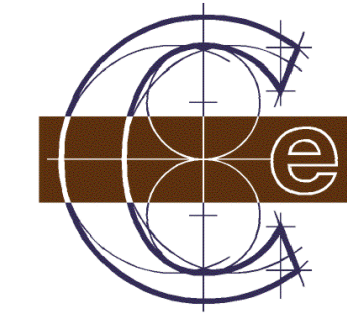
SHEET NAME:
FIRST FLOOR PLAN - LIGHTING / PHOTOMETRICS

DRAWING NUMBER:
EL101

NOTE: DO NOT SCALE DRAWING FOR CONSTRUCTION.



FLOOR PLAN - LIGHTING
SCALE: 1/8" = 1'-0"



Classic Engineering, LLC
 100 Cesar E Chavez Ave SW
 Grand Rapids, Michigan 49503
 (616) 742-2810
 www.classicengineering.com
 Project # 2026021



Engineering & Design

www.colliersengineering.com
 Copyright © 2024, Colliers Engineering & Design All Rights Reserved. This drawing and all the information contained herein is authorized for use only by the party for whom the services were contracted or to whom it is certified. This drawing may not be copied, reused, disclosed, distributed or relied upon for any other purpose without the express written consent of Colliers Engineering & Design.

REV	DATE	DESCRIPTION
1	03/16/26	BID PACK 2 - BIDS & PERMITS
2	03/XX/26	BULLETIN #1
3	04/03/26	BID PACK 2 - ADDENDUM 1

POWER KEYNOTES:

- ◇ NO WORK IN THIS AREA.
- ◇ PROVIDE NEW WIRING DEVICES IN MULTI-PURPOSE ROOM WITH TAMPER RESISTANT AND STAINLESS STEEL COVER PLATES AS SHOWN ON PLAN.
- ◇ ROUTE CIRCUITS FOR SERVING LINE DOWN INSIDE THE COLUMN TO FLOOR AREA. PROVIDE SURFACE MOUNTED CONDUIT ON FLOOR TO SURFACE MOUNTED BOXES AS SHOWN ON PLAN. ELECTRICAL CONTRACTOR SHALL PROVIDE A RUBBER RAMP TO COVER THE CONDUITS EQUAL TO "RUBBER FORM" #RF-RPIF. RUN CONTINUOUS BETWEEN BOXES.
- ◇ PROVIDE 1" CONDUIT DROP WITH 3-#8 + GROUND AND FLOOR MOUNTED KEYSTONE STYLE FLOOR BOX WITH 240V/20A NEMA 14/50 RECEPTACLE. VERIFY WITH EQUIPMENT.
- ◇ REUSE EXISTING CIRCUIT, RECONNECT TO NEW EQUIPMENT, FIELD VERIFY.
- ◇ PROVIDE GFCI CIRCUIT BREAKER.
- ◇ PROVIDE NEW CIRCUIT FOR DISHWASHER AND DRAIN TEMPERING KIT.
- ◇ PROVIDE 3/4" CONDUIT DROP WITH 2-#12 + GROUND TO FLOOR MOUNTED KEYSTONE STYLE FLOOR BOX WITH 120V/20A NEMA 5-20 RECEPTACLE.

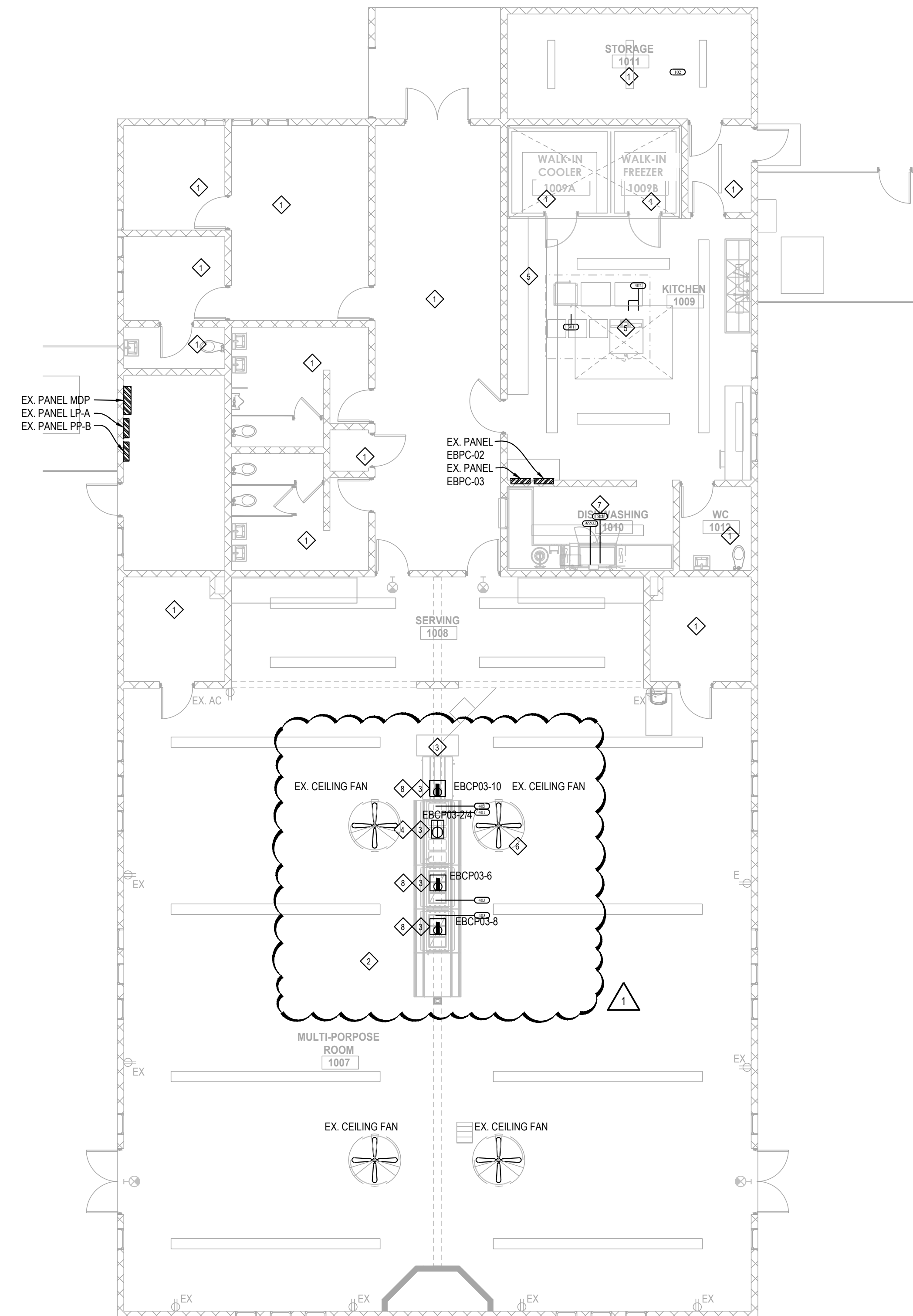
GENERAL POWER NOTES:

1. ALL EXISTING 15A & 20A 120V NON-LOCKING RECEPTACLES WITH PUBLIC SPACES WHERE CHILDREN CAN BE FOUND SHALL BE LISTED TAMPER RESISTANT PER NEC 406.12. THIS INCLUDES SCHOOLS CORRIDORS, GYM, MUSIC ETC. PROVIDE STAINLESS STEEL COVER PLATES.
2. MOUNT PANELS, TRANSFORMERS, DISCONNECT SWITCHES, AND COMBINATION MOTOR STARTERS WITH ADEQUATE CLEARANCES IN ACCORDANCE WITH NEC 110.
3. VERIFY ALL EQUIPMENT REQUIREMENTS, CONNECTION TYPES, AND LOCATIONS WITH EQUIPMENT SUPPLIER AND NAMEPLATES PRIOR TO ROUGH-IN.
4. FIRE ALARM DEVICES SHOWN FOR REFERENCE ONLY AND DO NOT REPRESENT COMPREHENSIVE SYSTEMS. ANY NEW DEVICES TO BE ADDED, MATCH EXISTING SYSTEM. SYSTEM WILL BE REQUIRED TO BE RECERTIFIED.

EQUIPMENT SCHEDULE								
Item	EQUIPMENT DESCRIPTION	VOLTS	PH	AMPS LOAD	DIRECT BY EC	CORDSET BY FSEC	AFF (in)	REMARKS
102	ICE MAKER W/ BIN	208	1	5.9	X		72	
301	STEAMER & STAND	208	3	42.0		X	5	PEDESTAL MOUNTED RECEPTACLE BY TRADES
302	CONVECTION OVEN - DOUBLE DECK	208	3	34.0	X		5	PEDESTAL MOUNTED JUNCTION BOX BY TRADES
401	HOT FOOD TABLE	120/208	1	28.4		X	5	PEDESTAL MOUNTED RECEPTACLE BY TRADES
403	COLD FOOD TABLE	120	1	8.6		X	5	PEDESTAL MOUNTED RECEPTACLE BY TRADES
405	MILK COOLER - DOUBLE SIDED	120	1	3.3		X	5	PEDESTAL MOUNTED RECEPTACLE BY TRADES
502	DISHWASHER	208	3	138.9	X		60	
502A	DRAIN WATER TEMPERING KIT	120	1	5.0	X		16	

NOTE:

1. FSEC SHALL VERIFY ROUGHIN REQUIREMENTS FOR FUTURE, PURVEYOR SUPPLIED, OWNERS RELOCATED EQUIPMENT, OWNER SUPPLIED EQUIPMENT, ETC.
2. TRADES TO REUSE EXISTING ROUGHINS WHERE APPLICABLE.
3. TRADES SHALL DISCONNECT, REMOVE, STORE & RECONNECT ANY EXISTING EQUIPMENT AS REQUIRED FOR CONSTRUCTION PURPOSES.
4. EQUIPMENT NOT BEING REUSED TO BE DISCONNECTED BY TRADES AND STORED OR DISCARDED BY THE FSEC AS DIRECTED BY OWNER.
5. EQUIPMENT DESIGNATED AS RELOCATED SHALL BE DISCONNECTED BY THE TRADES AND RELOCATED BY THE FSEC AS PER PLANS AND SPECIFICATIONS.



FLOOR PLAN - POWER
 SCALE: 1/8" = 1'-0"

LANSING SCHOOL DISTRICT

BID PACK 2
 EBERSOLE CENTER FOOD SERVICE - EQUIPMENT REPLACEMENT & RENOVATIONS SO-1853
 3400 2ND STREET
 WAYLAND, MI 49348

MI ARCHITECTURE
 FIRM LICENSE # NL000605

Colliers Engineering & Design
 GRAND RAPIDS
 560 5th St. NW
 Suite 305
 Grand Rapids, MI 49504
 Phone: 616.827.4270
 Colliers Engineering & Design, Architecture, Landscape Architecture, Surveying, CT P.C.

PROJECT MANAGER: L. WOOD
 DISCIPLINE LEAD: C. LADEWIG
 DESIGNER: C. LADEWIG
 REVIEWER:
 DATE ISSUED: 03/16/2026
 PROJECT NUMBER: 26000750A

SHEET NAME:

FIRST FLOOR PLAN - POWER

DRAWING NUMBER:
EP101

NOTE: DO NOT SCALE DRAWING FOR CONSTRUCTION.



CM CLARIFICATION #1

1. Attwood Elementary:
 - A. The Tectum Panels will be an accent color and they should be painted before they are installed.
 - B. The exposed ceiling will be painted with SW Flat Ceiling Paint.
 - C. The Paint Specification is on Sheet A141.

2. Ebersole Center:
 - A. Painting notes are on Sheet A101.
 - B. Wood trim will be painted with SW Semi-Gloss, Color to match existing trim.
 - C. Walls and ceilings will be painted with SW Eggshell, Color to match existing.
 - D. The painter will not be required to provide plywood floor protection for Tectum Ceiling touch up paint.

3. Dwight Rich:
 - A. Paint Specification is on Sheet A101.

4. Gardner Elementary:
 - A. Paint Specification is on Sheet A141.
 - B. Any areas where masonry infill is noted will need to be primed and painted, P-1.
 - C. Masonry infill is located at Passage D122, Passage D124, New Cooler 130B, Dishwash Area A134 and any other location that note new masonry walls.
 - D. Several HM door frames require paint as noted on Sheet A141. All new doors will be factory finished.



CM CLARIFICATION #2

1. General note for Attwood Elementary:
Resinous Flooring is removed from the Painting Division 'D' and moved to Bid Division 'C' Flooring.
The flooring bidders must include an allowance of \$5,000.00 for nonstandard prep work.

There will be substantial prep work involved with the Attwood floor project and the flooring contractor will be expected to track the floor prep hours and collect signed T&M slips from the CM Superintendent. When the project is finished the flooring contractor must submit the slips to be billed against the allowance and a change order will be issued to cover the transaction.

2. If painters want to bid on the resinous floor work they should include voluntary alternates on the bid form for the resinous flooring at Attwood and Gardner.



CM CLARIFICATION #3

1. The current Bid Division E – Mechanical has been divided into two separate divisions. Bid Division E will be “Plumbing” and Bid Division “G” will be HVAC.
2. Bid Division E – Plumbing will include:

Section	024119	Selective Demo
	078400	Firestopping
	220000	Plumbing

Gardner Phase 1 includes Kitchen Area only to be completed Summer of 2026.
Gardner Phase 2 will proceed in Summer 2027.

All Plumbing demolition detailed on the drawings is included in this contract.

The day these projects start the plumbing contractor must be on site to disconnect kitchen equipment so the food service contractor can remove it.

This division includes labor, material, and equipment to furnish and install all plumbing including all domestic water systems, pipes, pumps, heads, sanitary soil waste and vent systems, storm drain systems, Grease trap and vent system, plumbing fixtures and equipment, traps and supports, insulation for plumbing systems and fixture installation, pipe and valve identification for a complete and operating system as shown and/or specified.

This division includes supply and installation of all gas piping and regulators, supply and installation of stainless-steel sinks in prefabricated casework, water heaters, condensate drains and fireproof sealants where plumbing work penetrates fire rated walls and ceilings.

The plumbing plans detail several new sanitary lines that must be connected to existing UG sanitary piping. In areas that require cutting, removal and replacement of concrete floors, the General Trades Contractor will remove and replace the concrete. The Plumbing Contractor must perform all required excavation, backfill, compaction and removal of excess dirt.

The drawings detail several new water pipes to connect to new equipment and fixtures and this piping is included in the Plumbing division.

This division includes the following prep work for the Food Service Equipment Contractor.

All required rough-ins and piping with stop valves, elbows, nipples, couplers, traps, waste vents, gas regulators for water, steam, gas, etc. and will also make final connections to the equipment. The plumber will also install all equipment accessories furnished by the FSEC. The plumber will provide the required water heater and piping unless noted otherwise and plumbing, mechanical and electrical subs shall disconnect and reconnect relocated equipment if applicable.

This division includes all required permits and fees as required by state code. Housekeeping and cleanup on a daily basis is included in this division.



This division includes as built drawings, operation and maintenance manuals, owner training and specified attic stock material.

Gardner Phase 1 includes all work in Kitchen Area including Rooms 130A, 134, 136 and 137.

Gardner Phase 2 includes the balance of the Plumbing work including Rooms 131, 132, 129, 133, 121 and 125.

3. Bid Division G – HVAC will include:

Section	024119	Selective Demo
	078400	Firestopping
	230000	HVAC

Gardner Elementary is the only school that includes HVAC work.
Gardner Phase 1 includes Kitchen Area only to be completed Summer of 2026.
Gardner Phase 2 will proceed in Summer 2027.

Any roof patching must be scheduled with the roofing company that holds the warranties for these projects. If roof curbs are required, they must be provided with the roof top equipment. Placement of roof top equipment must be approved by the CM. If additional steel is required, the CM will arrange for supply and erection of the steel.

This division includes labor, material and equipment to make the specified revisions to the HVAC system as detailed in the contract documents. The majority of the HVAC work involves revisions to the existing ductwork, grilles, diffusers and dampers, but if the documents specify new equipment such as pumps, stacks, flues, unit heaters, air handling units, unit vents, exhaust fans or furnaces, this contractor must provide and install all of the specified equipment.

Any required connections or adjustments to the ATC / BMS system are included in this contract. All engineering, installation, calibration, software programming and start-up of the ATC / BMS system are included in this contract.

Any specified testing and balance for the HVAC systems is included in this division.

This division includes all required permits and fees as required by state code. Housekeeping and cleanup on a daily basis is included in this division.

This division includes as built drawings, operation and maintenance manuals, owner training and specified attic stock material.

Gardner Phase 1 includes all work in Kitchen Area including Rooms 130A, 134, 136 and 137.

Gardner Phase 2 includes the balance of the HVAC work including Rooms 131, 132, 129, 133, 121 and 125.



CM CLARIFICATION #4

1. This Clarification is for Bid Division "E" Plumbing and Bid Division "G" HVAC. The Bid Date for these two divisions has been extended from April 9, 2026 to April 16, 2026 at 2:00 pm.

All other divisions must submit their bids on April 9, 2026 at 2:00 PM as detailed in the Bid Invitation.



CM CLARIFICATION #5

1. This Clarification is for Bid Division "D" Painting. Sherwin Williams performed an adhesion test at Attwood Elementary and they prepared the following recommendations for prep work on the walls that call for new paint. Remove all loose and peeling paint followed by abrasive sanding and washing the walls with cleaner / degreaser. The first coat of paint should be extreme bond primer. The painting contractor may choose to ignore these recommendations, but a 5-year adhesion guaranty will be required at project completion.